

WW-7
8-30-06



West Virginia Department of Environmental Protection
Office of Oil and Gas
WELL LOCATION FORM: GPS

API: 47-041-03701 WELL NO.: WV 608222 (Opha Whitesel #1 - 8222)

FARM NAME: Opha Whitesel

RESPONSIBLE PARTY NAME: EQT Production Company

COUNTY: Lewis DISTRICT: Collins Settlement

QUADRANGLE: Roanoke 7.5'

SURFACE OWNER: The United States of America, U. S. Army Corps of Engineers

ROYALTY OWNER: The United States of America, U. S. Army Corps of Engineers

UTM GPS NORTHING: 4309620

UTM GPS EASTING: 546137 GPS ELEVATION: 358 m (1175 ft)

The Responsible Party named above has chosen to submit GPS coordinates in lieu of preparing a new well location plat for a plugging permit or assigned API number on the above well. The Office of Oil and Gas will not accept GPS coordinates that do not meet the following requirements:

- Datum: NAD 1983, Zone: 17 South, Coordinate Units: meters, Altitude: height above mean sea level (MSL) – meters.
- Accuracy to Datum – 3.05 meters
- Data Collection Method:
Survey grade GPS : Post Processed Differential
Real-Time Differential
Mapping Grade GPS X: Post Processed Differential X
Real-Time Differential

Received

NOV 24 2015

Office of Oil and Gas
Department of Environmental Protection

4. **Letter size copy of the topography map showing the well location.**
I the undersigned, hereby certify this data is correct to the best of my knowledge and belief and shows all the information required by law and the regulations issued and prescribed by the Office of Oil and Gas.

Signature

PS#2100
Title

11/11/15
Date

41037017

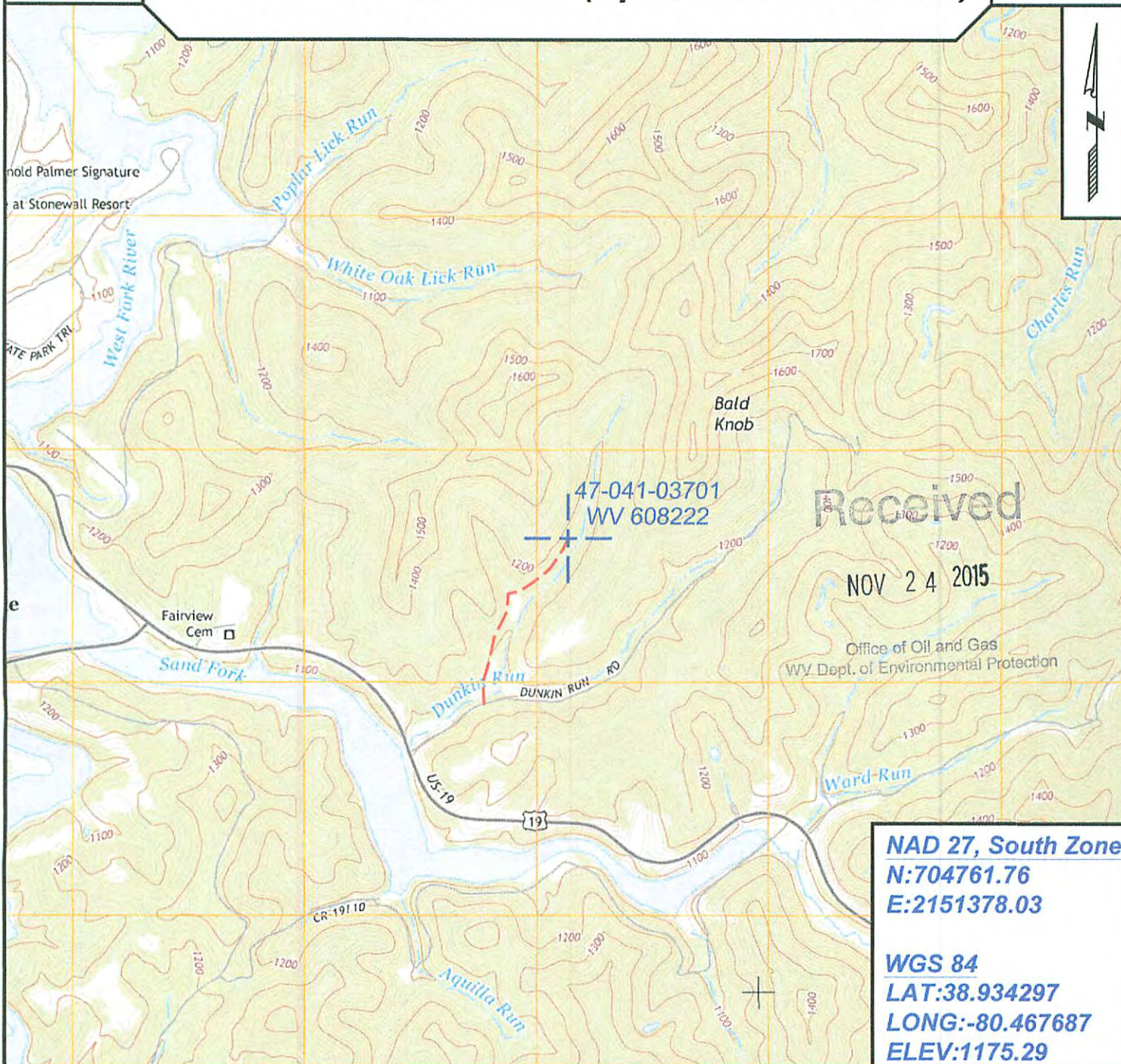
Topo Quad: Roanoke Scale: 1" = 2000'

County: Lewis Date: November 5, 2015

District: Collins Settlement Project No: 73-08

47-041-03701 WV 608222 (Opha Whitesel #1-8222)

Topo



SURVEYING AND MAPPING SERVICES PERFORMED BY:
ALLEGHENY SURVEYS, INC.

1-800-482-8606
237 Birch River Road
Birch River, WV 26610
PH: (304) 649-8606
FAX: (304) 649-8608

PREPARED FOR:

EQT Production Company

P.O. Box 280
Bridgeport, WV 26330

01/08/2016