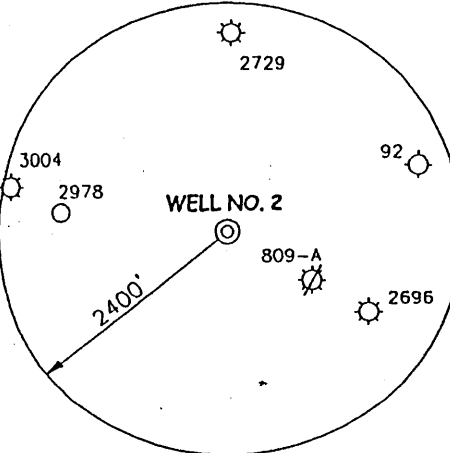
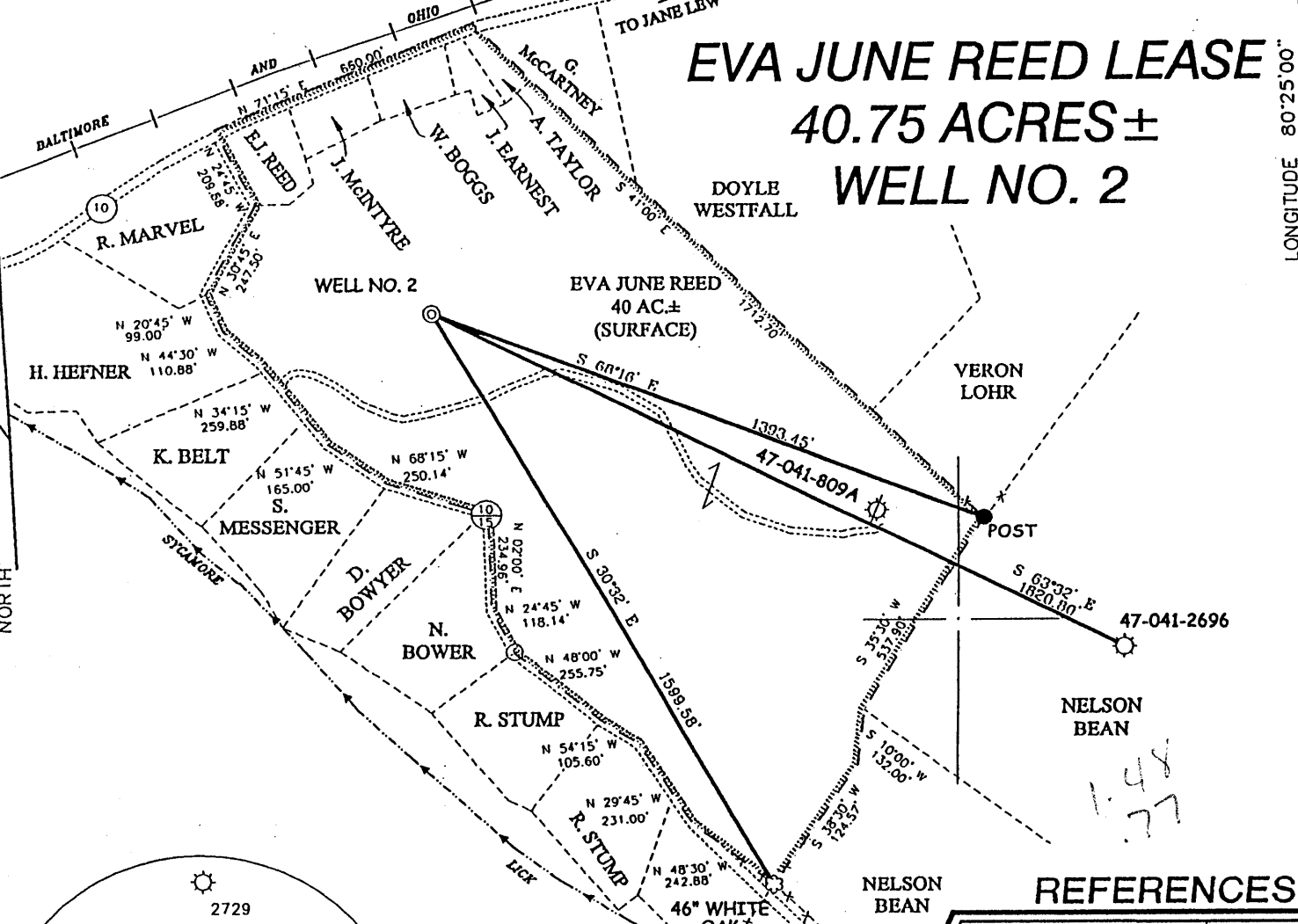
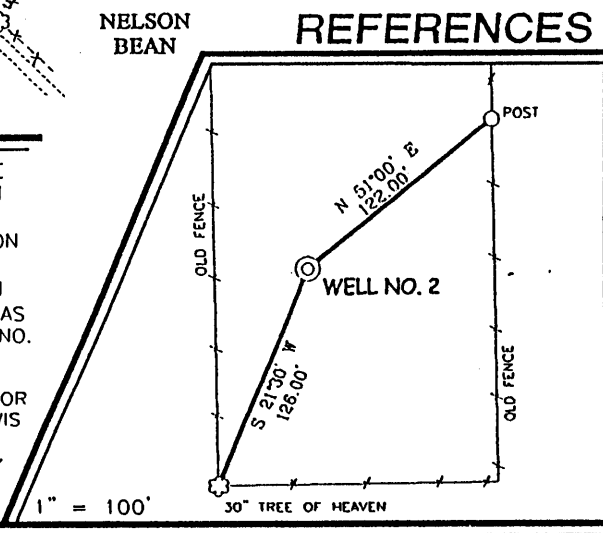


EVA JUNE REED LEASE 40.75 ACRES± WELL NO. 2



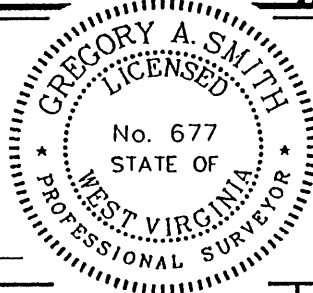
NOTES ON SURVEY

1. TIES TO WELLS AND CORNERS ARE BASED ON STATE PLANE GRID NORTH WV SOUTH ZONE NAD '27.
2. TIES TO REFERENCES ARE BASED ON MAGNETIC NORTH 05/09/01.
3. LEASE BOUNDARY SHOWN HEREON TAKEN FROM A PLAT DATED 8/20/74 AS PREPARED BY W. HOLT JR. FOR A.P.I. NO. 47-041-809-A.
4. SURFACE OWNER AND ADJOINER INFORMATION TAKEN FROM THE ASSESSOR AND COUNTY CLERK RECORDS OF LEWIS COUNTY IN 2000.
5. WELL LAT./LONG. ESTABLISHED BY DGPS(SUBMETER MAPPING GRADE).



I THE UNDERSIGNED, HEREBY CERTIFY THAT THIS PLAT IS CORRECT TO THE BEST OF MY KNOWLEDGE AND BELIEF AND SHOWS ALL THE INFORMATION REQUIRED BY LAW AND THE REGULATIONS ISSUED AND PRESCRIBED BY THE DEPARTMENT OF ENVIRONMENTAL PROTECTION.

P.S. 677 Gregory A. Smith



(+) DENOTES LOCATION OF WELL ON UNITED STATES TOPOGRAPHIC MAPS.
 DATE MAY 10 2001
 OPERATORS WELL NO. EVA JUNE REED NO. 2
 API WELL NO. 47-041-04511
 STATE COUNTY PERMIT

MINIMUM DEGREE OF ACCURACY 1 / 200 FILE NO. 4751P2 (83-47)
 PROVEN SOURCE OF ELEVATION JUNCTION OF ROADS ELEVATION 1052' SCALE 1" = 400'

STATE OF WEST VIRGINIA
 DIVISION OF ENVIRONMENTAL PROTECTION
 OFFICE OF OIL AND GAS

WELL TYPE : OIL GAS LIQUID INJECTION WASTE DISPOSAL IF "GAS" PRODUCTION STORAGE DEEP SHALLOW

LOCATION :
 ELEVATION 1182' WATERSHED SYCAMORE LICK
 DISTRICT HACKERS CREEK COUNTY LEWIS QUADRANGLE WESTON 7.5'
 SURFACE OWNER EVA JUNE REED ACREAGE 40
 ROYALTY OWNER MIKE ROSS, INC. LEASE ACREAGE 40.75
 PROPOSED WORK : LEASE NO. _____
 DRILL CONVERT DRILL DEEPER REDRILL FRACTURE OR STIMULATE PLUG OFF OLD FORMATION PERFORATE NEW FORMATION PLUG AND ABANDON CLEAN OUT AND REPLUG OTHER _____
 PHYSICAL CHANGE IN WELL (SPECIFY) _____ TARGET FORMATION DEVONIAN SHALE
 ESTIMATED DEPTH 5550'

WELL OPERATOR MIKE ROSS, INC. DESIGNATED AGENT MIKE ROSS JUN - 1 2001
 ADDRESS BOX 219 COALTON, WV 26257 ADDRESS BOX 219 COALTON, WV 26257

LONGITUDE 80°25'08" LAT. 39°06'12.1" COUNTY NAME LEWIS PERMIT 4511

State of West Virginia
Division of Environmental Protection
Section of Oil and Gas

showed [Signature]

Well Operator's Report of Well Work

Farm name: Eva June Reed #2 Operator Well No.: #2

LOCATION: Elevation: 1182 Quadrangle: Weston 7.5'

District: Hackers Creek County: Lewis
Latitude: 39 Feet South of 07 Deg. 30 Min. Sec.
Longitude 80 Feet West of 25 Deg. 00 Min. Sec.

Company: Mike Ross, Inc.

Table with 5 columns: Address, Casing & Tubing, Used in drilling, Left in well, Cement fill up Cu. Ft. Rows include Agent: Mike Ross, Inspector: Tim Bennett, Date Well Work Commenced: 08/20/01, etc.

OPEN FLOW DATA

Big Injun, Fifth, Bayard, Balltown, Benson
Producing formation Alexander, Elk Pay zone depth (ft) 1434-5535
Gas: Initial open flow 80 MCF/d Oil: Initial open flow -- Bbl/d
Final open flow 720 MCF/d Final open flow -- Bbl/d
Time of open flow between initial and final tests 72 Hours
Static rock Pressure 320 psig (surface pressure) after 4 Hours

Second producing formation Pay zone depth (ft)
Gas: Initial open flow MCF/d Oil: Initial open flow Bbl/d
Final open flow MCF/d Final open flow Bbl/d
Time of open flow between initial and final tests Hours
Static rock Pressure psig (surface pressure) after Hours

NOTE: ON BACK OF THIS FORM PUT THE FOLLOWING: 1). DETAILS OF PERFORATED INTERVALS, FRACTURING OR STIMULATING, PHYSICAL CHANGE, ETC. 2). THE WELL LOG WHICH IS A SYSTEMATIC DETAILED GEOLOGICAL RECORD OF ALL FORMATIONS, INCLUDING COAL ENCOUNTERED BY THE WELLBORE.

Signed: [Signature]
By: Mike Ross
Date: SEPTEMBER 6, 2001

FEB 08 2002

LEW 4511

Fractured Sept. 5, 2001

1st Stage - Perfs @ 4683-5561, 12 Holes, 950 Gal Acid,
150 sks 80/100 Sand, 305 sks 20/40 Sand, 80,000 SCF N²

2nd Stage - Perfs @ 4256-4262, 14 Holes, 5000 Gal Acid,
150 sks 80/100 Sand, 345 sks 20/40 Sand, 40,000 SCF N²

3rd Stage - Perfs @ 3132-3158, 12 Holes, 2226-1727, 14 Holes, 800 Gal Acid
594 sks 20/40 Sand, 86,000 SCF N²

4th Stage - Perfs @ 1447-1504, 8 Holes, 1,000 Gal Acid,
217 sks 20/40 Sand, 40,000 SCF N²

Sand & Shale	0	540	1/2" Water @ 50'
Coal	540	545	3" Water @ 300'
Sandy Shale	545	1283	
Little Lime	1283	1303	
Sandy Shale	1303	1333	
Big Lime	1333	1434	
Big Injun	1434	1520	Show of gas
Sandy Shale	1520	1950	
Fifth Sand	1950	2110	Show of gas
Sandy Shale	2110	2220	
Bayard Sand	2220	2245	Show of gas
Sandy Shale	2245	3140	
Balltown	3140	3200	Show of gas
Sandy Shale	3200	4270	
Benson Sand	4270	4280	Show of gas
Sandy Shale	4280	4700	
Alexander Sand	4700	4720	Show of gas
Sandy Shale	4720	5525	
Elk Sand	5525	5535	Show of gas
Sandy Shale	5535	5700	TD