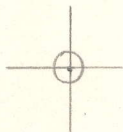


LATITUDE 39° 10' 00"



LONGITUDE 80° 32' 30"

7'5 OGIS topo location

|          |               |         |       |
|----------|---------------|---------|-------|
| 7.5' loc | <u>0.81 S</u> | 15' loc | _____ |
|          | <u>1.19 W</u> | (calc.) | _____ |

Company \_\_\_\_\_

Farm \_\_\_\_\_

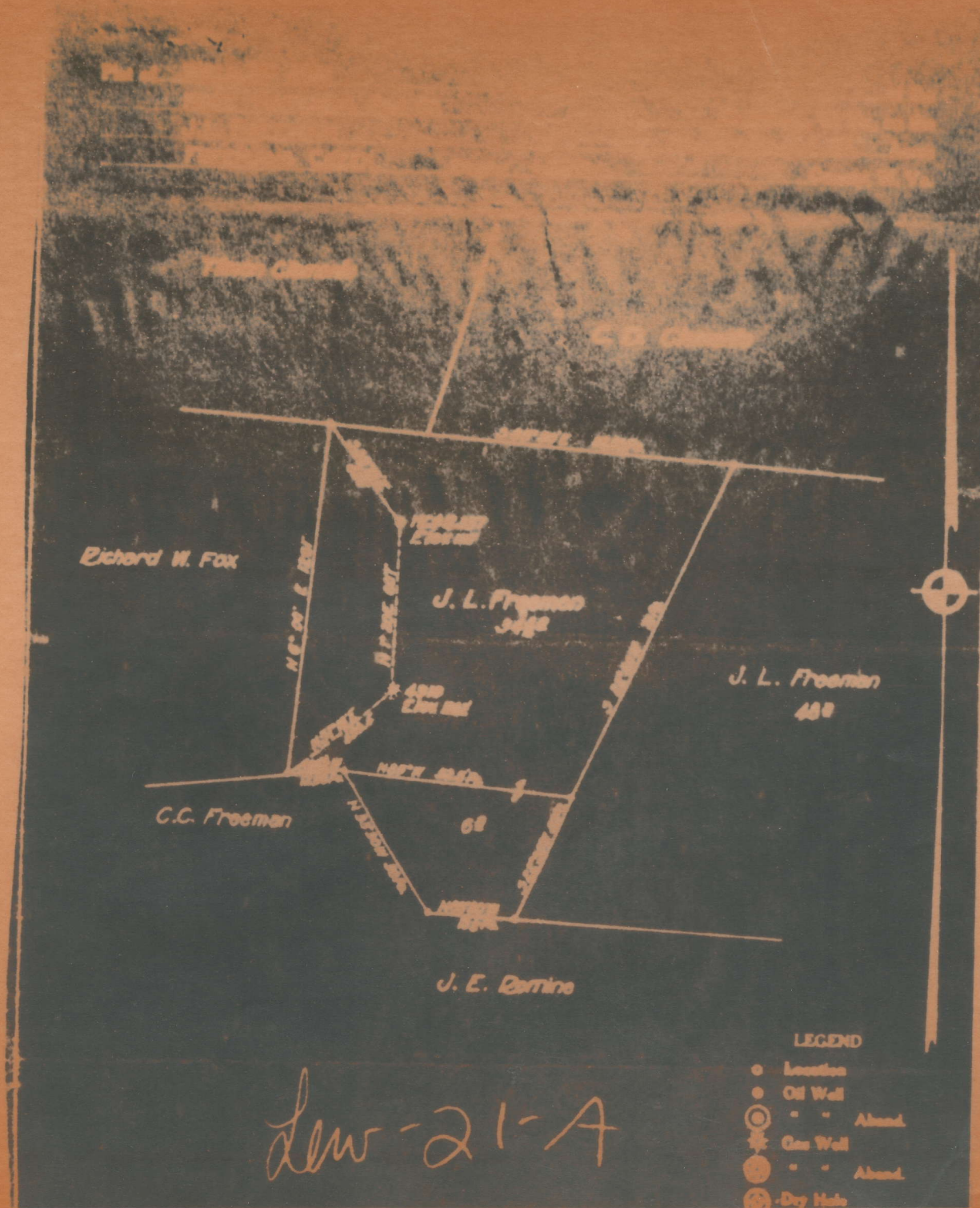
Quad BIG ISAAC 7 1/2'

County LEWIS

District FREEMANS CREEK

WELL LOCATION MAP

File No. 041-21A



21-A

Freemans Creek District, Lewis County, W. Va.

Hope Natural Gas Co.

On 89 acres, surface owned by J. L. Freeman, Kincheloe, W. Va.,  
and mineral rights by Arthur Lee, Elkins, W. Va.

Elevation, 1262' L.

10" casing, 235'; 8" casing, 1494'.

Abandonment reported to Dept. of Mines, Feb. 20, 1931.

Well was shot at 2748-2760'.

Salt water at 1455'.

|                                | Top. | Bottom. |
|--------------------------------|------|---------|
| Native coal                    | 320  | 324     |
| Pittsburgh Coal                | 623  | 627     |
| Little Dunkard Sand            | 1008 | 1022    |
| Big Dunkard Sand               | 1090 | 1130    |
| First Salt Sand (water, 1455') | 1430 | 1470    |
| Second Salt Sand               | 1495 | 1600    |
| Third Salt Sand                | 1675 | 1810    |
| Maxton Sand                    | 1950 | 1960    |
| Little Lime                    | 1995 | 2007    |
| Pencil Cave                    | 2007 | 2017    |
| Big Lime (oil, 2062')          | 2017 | 2098    |
| Big Injun Sand                 | 2098 | 2208    |
| Squaw Sand                     | 2218 | 2250    |
| 30-Ft. Sand                    | 2614 | 2644    |
| Gordon Stray Sand              | 2692 | 2718    |
| Gordon Sand (gas, 2755')       | 2719 | 2773    |
| Shells (gas, 3001')            | 2999 | 3001    |
| Total depth                    |      | 3038    |