

LATITUDE 39° 07' 30"

LONGITUDE 80° 17' 30"



T'5 OGIS topo location

7.5' loc 2735 15' loc \_\_\_\_\_  
                  2.12w (calc.) \_\_\_\_\_

Company HNG Co

Farm J. E. Post # 4939

Quad BERLIN 7 1/2'

County LEWIS

District HACKERS CREEK

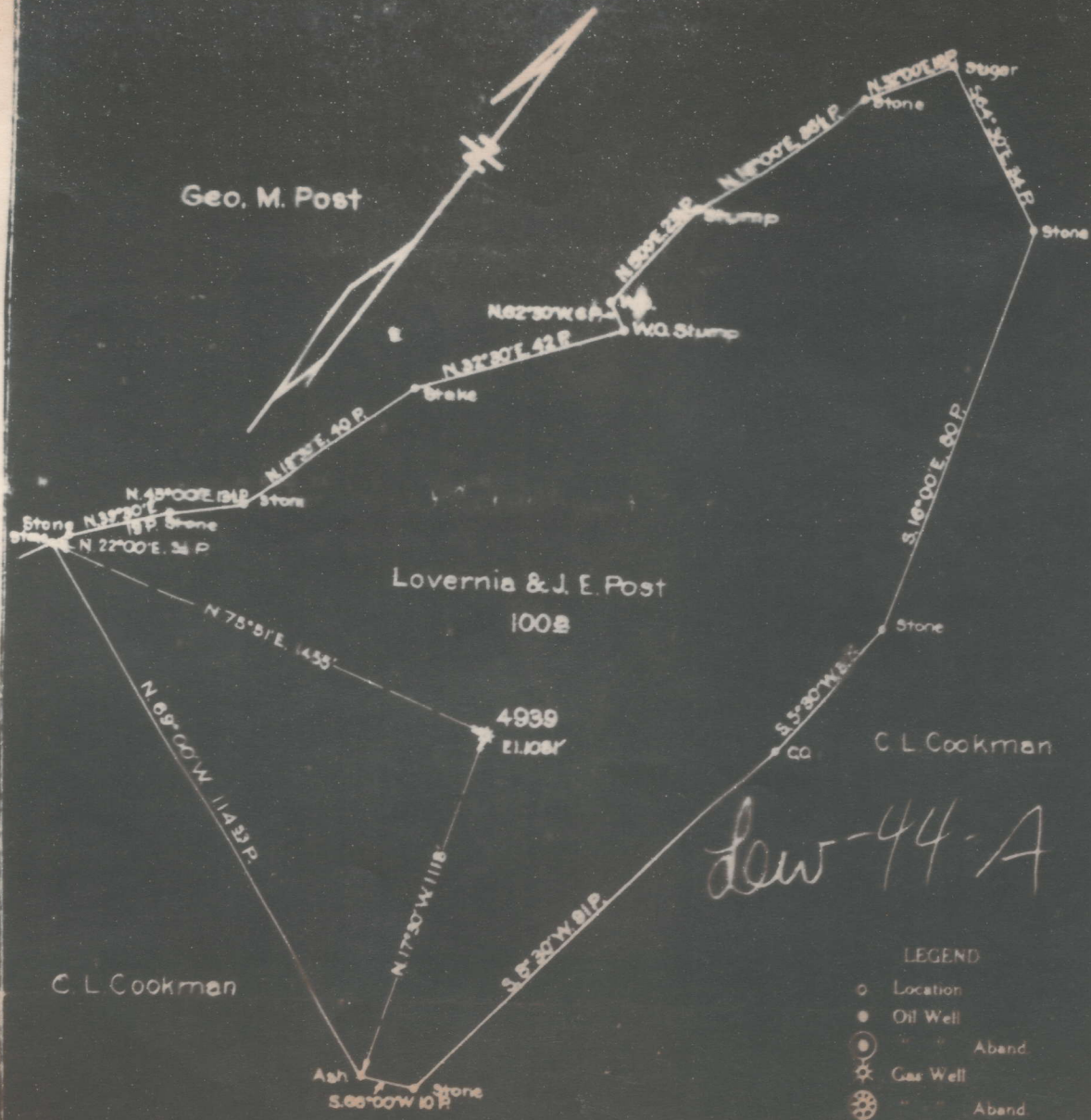
WELL LOCATION MAP

File No. 041-44A

Patent Well No 4939  
 Hope Natural Gas Company  
 J. E. Post  
 Hackers Creek

of the  
 Clarkburg, W. Va., on the  
 Farm consisting of 100 Acres  
 County, W. Va.

District Lewis



*Lew-44-A*

- LEGEND
- Location
  - Oil Well
  - Aband.
  - ★ Gas Well
  - ★ Aband.
  - ⊕ Dry Hole

4939  
 FB-509, P40  
 9-15-1932  
 Scale 1" = 400'

ENGINEERS CERTIFICATE

I, the undersigned, hereby certify that this map is correct and shows all the information to the best of my knowledge and belief acquired by the...



44A

Hackers Creek District, Lewis County, W. Va.  
 Hope Natural Gas Co., 445 W. Main St., Clarksburg, W. Va.  
 On 110 acres, surface and mineral rights owned by Loverna Post,  
 Jane Lew, W. Va.  
 Elevation, 1081' L.  
 6-5/8" casing, 1517'.  
 No coal was encountered. Starts below coal.  
 Abandonment reported to Dept. of Mines Sept. 16, 1932.  
 Well was shot at 2290-2300'.  
 Fresh water at 40 and 480'; salt water at 1780'.  
 Gas well; now exhausted.

	Top.	Bottom.
Water at 40'		
Little Dunkard Sand	270	- 290
Big Dunkard Sand	408	- 432
Gas Sand (water at 480')	467	- 485
First Salt Sand	650	- 895
Second Salt Sand	975	- 1007
Little Lime	1332	- 1350
Pencil Cave	1350	- 1360
Big Lime	1360	- 1425
Big Injun Sand (show gas, 1514')	1425	- 1548
Gantz? (Berea) Sand	1727	- 1750
50-Ft. Sand (water, 1780')	1768	- 1797
30-Ft. Sand	1848	- 1918
Gordon Sand	2020	- 2035
Fourth Sand	2066	- 2081
Fifth Sand (gas, 2198')	2188	- 2201
Total depth		2324