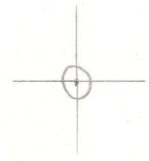


LATITUDE 39°05'00"

80°02'00" LONGITUDE



7'5 OGIS topo location

7.5' loc 211 S 15' loc _____
0.56 W (calc.) _____

Company _____

Farm _____

Quad BERLIN 7 1/2'

County LEWIS

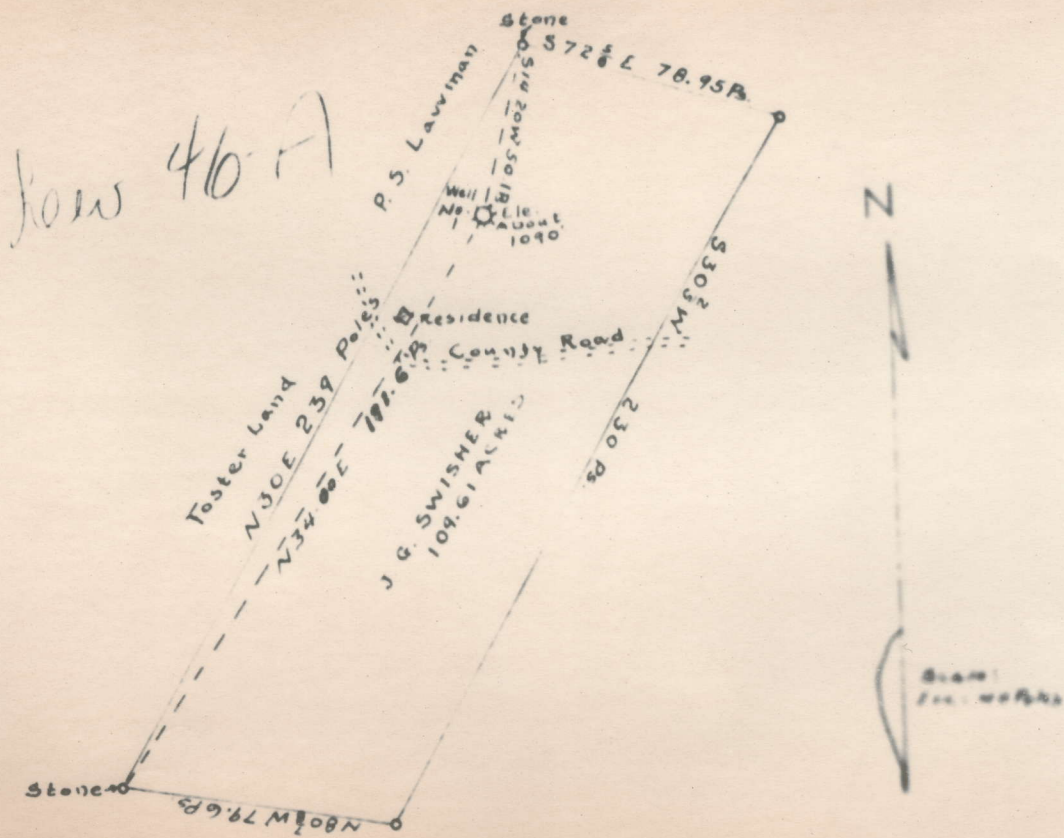
District HACKERS CREEK

WELL LOCATION MAP

File No. 041-46A

Plat of the location of Well No. 1, of Earl Goodwin's, of
 June Lew, W. Va., on the J. G. Swisher Farm, about one mile above
 Berlin, Hacker's Creek District, Lewis County, West Virginia.

The particular tract of land on which the well is located
 contains 109.61 Acres.



Engineer's Certificate.

I, the undersigned, hereby certify that this map is correct
 and shows all the information to the best of my knowledge and be-
 lief, required by the oil and gas section of the Mining Laws of
 West Virginia.

The surface at this point is below the Red stone and Pitts-
 burgh coal. In fact, no workable coal is here.

W. H. L. S.
 Registered Civil Engineer.

46A

Hackers Creek District, Lewis County, W. Va.

Earl Goodwin, Jane Lew, W. Va.

On 135 acres, surface owned by J. G. Swisher, Berlin, W. Va., and mineral rights by Earl Goodwin, Jane Lew, W. Va.

Elevation, 1090'.

10" casing, 125'; 8 1/2", 800'; 6-5/8", 1519'; 2" tubing, 2450'.

Packer, 2 x 6-5/8 x 2, set at 2262'.

Casing perforated at 2333 to 2345'.

No coal was encountered.

Abandonment? report to Dept. of Mines not dated (filed Oct. 1932).

Well completed Jan, 20, 1927.

Well was shot at 2324-2337'.

Small amount of salt water with gas at 2335'.

Gas well.

	Top.	Bottom.
1st Salt Sand	710	- 786
2nd Salt Sand	830	- 1028
3rd Salt Sand	1028	- 1259
Maxton Sand	1385	- 1404
Little Lime	1485	- 1500
Pencil Cave	1500	- 1516
Big Lime	1516	- 1587
Big Injun Sand	1587	- 1705
Sand (Berea? Gantz?) ??	1758	- 1770
50-Ft. Sand	1835	- 1875
30-Ft. Sand	1904	- 2000
Gordon Stray Sand	2004	- 2025
Fourth Sand	2195	- 2210
Fifth Sand	2251	- 2260
Bayard Sand (gas, 2323-2349') ?	2328	- 2335
Total depth		2450