

LATITUDE 39° 05' 00"

LONGITUDE 80° 27' 30"



7'5 OGIS topo location

7.5' loc 1625 15' loc _____
 1.70W (calc.) _____

Company _____

Farm _____

Quad WESTON 7 1/2'

County LEWIS

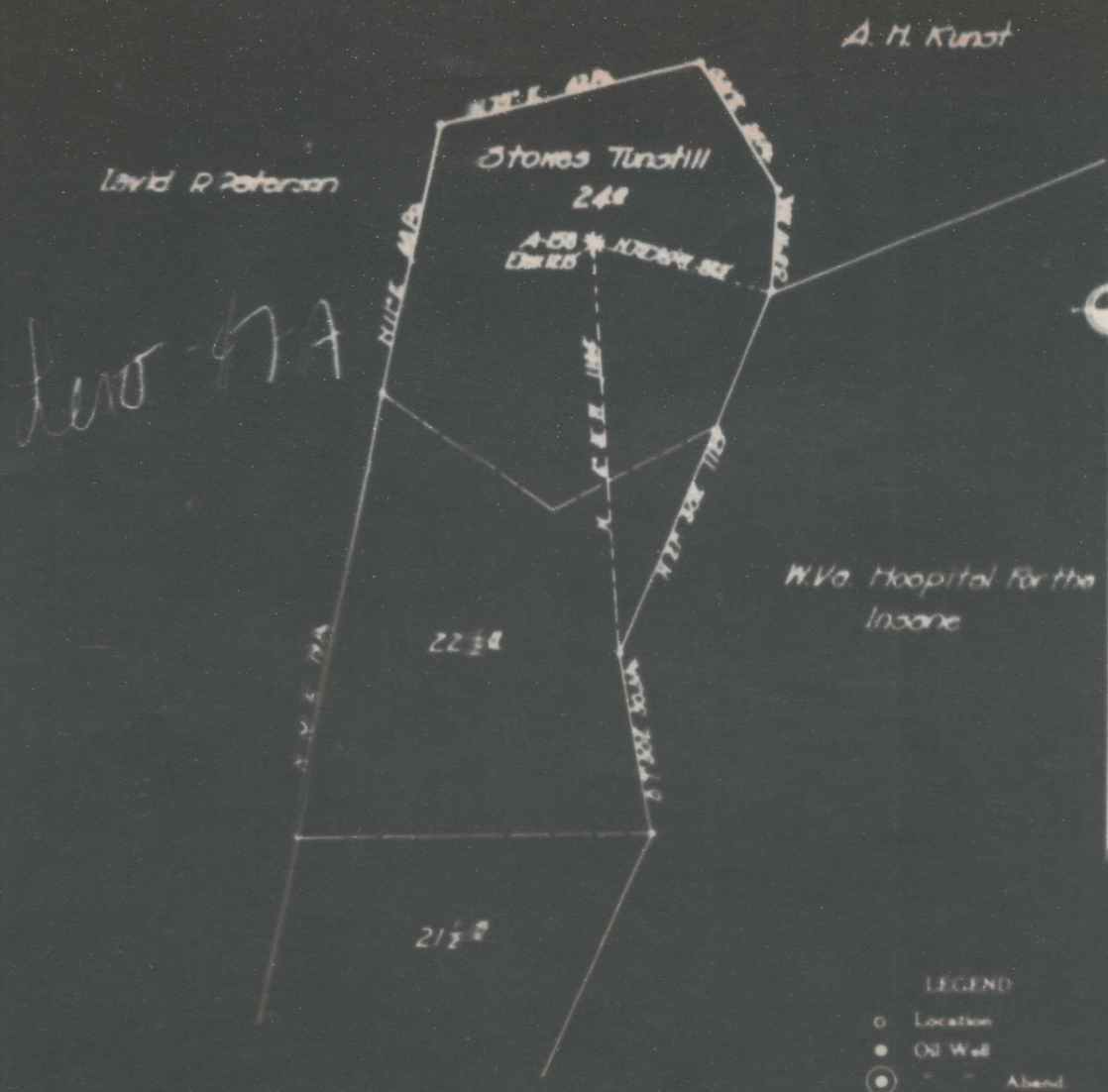
District FREEMANS CREEK

WELL LOCATION MAP

File No. 041-47A

LOPE CONSTRUCTION & REFINING CO.
 STONES TUNSTALL
 REEMANS CREEK District LEWIS

Clarksburg, W. Va., on the
 Farm consisting of 66 Acres
 County, W. Va.



LEGEND

- Location
- Oil Well
- ⊙ - - Aband
- ⊗ Gas Well
- ⊗ - - Aband
- ⊕ Dry Hole

15-12-32
 F. B. 909-9-12
 Scale 1"=400'

ENGINEERS CERTIFICATE

I, the undersigned, hereby certify that this map is correct and shows all the information to the best of my knowledge and belief, required by the oil and gas section of the mining laws of West Virginia.

47-A

Freemans Creek District, Lewis County, W. Va.

Hope Cons. & Ref. Co.

On 68 acres, surface and mineral rights owned by Perry G. Alfred,
Weston, W. Va.

Elevation, 1213' L.

6-5/8" casing, 1800'.

Abandonment reported to Dept. of Mines, Dec. 16, 1933.

Well was shot at ~~2480-2496'~~ 2480-2496'.

Fresh water at 95, 135 and 300'; salt water not recorded.

	Top.	Bottom.
Native coal (water, 95, 135, and 300')	20	22
Little Dunkard Sand	665	695
Big Dunkard Sand	740	765
Gas Sand	767	845
First Salt Sand	850	900
Second Salt Sand	940	1065
Third Salt Sand (show oil, 1225-1238')	1175	1290
Maxton Sand	1475	1500
Big Lime	1626	1691
Big Injun Sand (show gas, 1705')	1691	1830
50-Ft. Sand	1935	2000
30-Ft. Sand (show gas, 2214')	2212	2270
Gordon Stroy Sand (gas, 2278')	2272	2297
Gordon Sand (gas, 2300')	2300	2336
Fourth Sand	2335	2360
Fifth Sand (gas, 2480-2496')	2478	2501
Total depth		2506