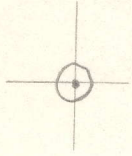


LATITUDE 39° 07' 30"

LONGITUDE 90° 22' 30"



7'5 OGIS topo location

7.5' loc 1.385 15' loc \_\_\_\_\_  
                  1.86 w (calc.) \_\_\_\_\_

Company \_\_\_\_\_

Farm \_\_\_\_\_

Quad WESTON 7 1/2'

County LEWIS

District HACKERS CREEK

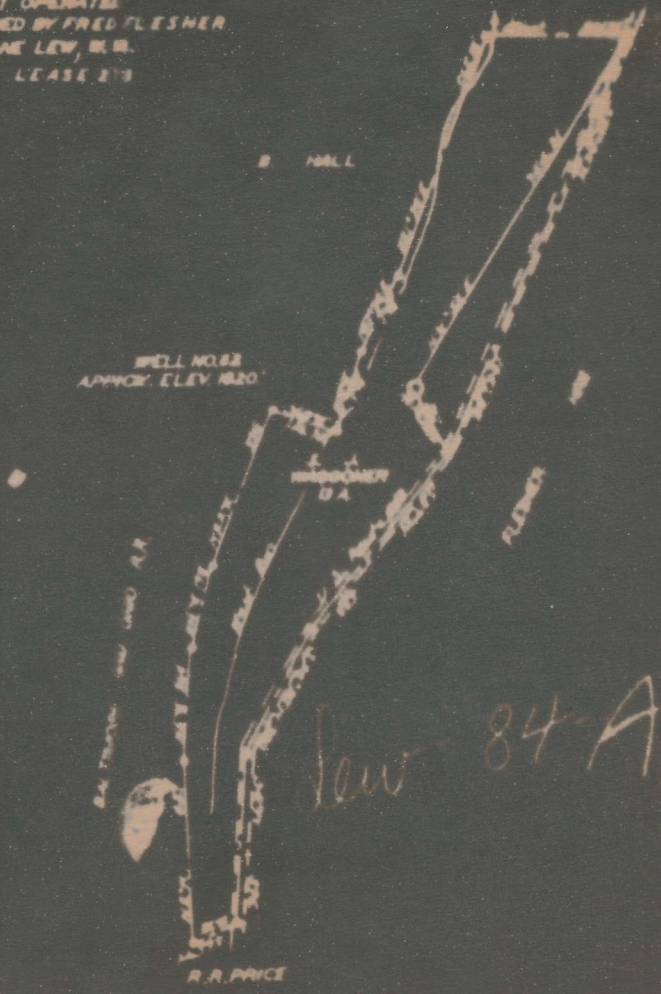
WELL LOCATION MAP

File No. 041-84A



PLAT OF THE PROPOSED ABANDONMENT WELL NO. 82 OF  
CUMBERLAND & ALLEGHENY GAS CO. OF PITTSBURGH, P.A.  
ON THE SARAH J WAGGONER FARM CONSISTING OF 13 ACRES  
LOCATED IN WAGGONER CREEK DISTRICT LEWIS COUNTY, W. VA.

COAL NOT OPERATED  
COAL OWNED BY FRED FLESHER  
JANE LEW, W. V.  
LEASE 273



ENGINEERS CERTIFICATE

I, THE UNDERSIGNED, HEREBY CERTIFY THAT THIS MAP IS CORRECT AND ACCURATE  
ALL THE INFORMATION TO THE BEST OF MY KNOWLEDGE AND BELIEF  
BY THE OIL AND GAS SECTION OF THE MINING LAWS OF WEST VIRGINIA

*[Handwritten signature]*



Lew  
84-A

Hackers Creek District, Lewis County, W. Va.  
Cumberland & Allegheny Gas Co., 800 Union Trust Bldg.,  
Pittsburgh, Pa.

On 13 acres, surface owned by Sarah J. Waggoner, Jane Lew, W. Va.,  
Mrs. Gertrude Bargerhoff, and Fres Flesher, Jane, W. Va.,  
and mineral rights by C&A G Co., Pittsburgh, Pa.

Drilled prior to June 1, 1929.

Elevation, 1020'.

10" casing, 297';  $8\frac{1}{2}$ ", 727'; 6-5/8", 1263'; 5-3/16", 2133'.

No coal was encountered.

Abandonment reported to Dept. of Mines May 16, 1935.

Well was shot in Fifth and Benson Sands.

Gas well.

	Top.	Bottom.
Gravel, slate, and sand	0	120
Little Dunkard Sand	120	180
Big Dunkard Sand	305	325
Gas Sand	333	363
1st Salt Sand	465	535
2nd Salt Sand	620	685
3rd Salt Sand	790	828
Little Lime	1145	1168
Pencil Cave	1168	1174
Big Lime	1174	1225
Big Injun Sand	1225	1345
Gantz? (Berea) Sand	1535	1560
50-Ft. Sand	1610	1660
30-Ft. Sand	1695	1707
Gordon Stray Sand	1836	1910
Gordon Sand (gas at 1954')	1915	1958
Fifth Sand (gas, 2047-2056')	2047	2056
Bayard Sand	2135	2145
Speechley Sand	2865	2880
Benson Sand (gas, 4043')	4019	4030
Total depth		4066



