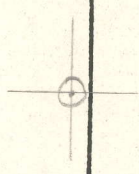


LATITUDE 39° 00' 00"

LONGITUDE 80° 37' 30"



7'5 OGIS topo location

7.5' loc 266 S 15' loc _____
 0.04w (calc.) _____

Company _____

Farm _____

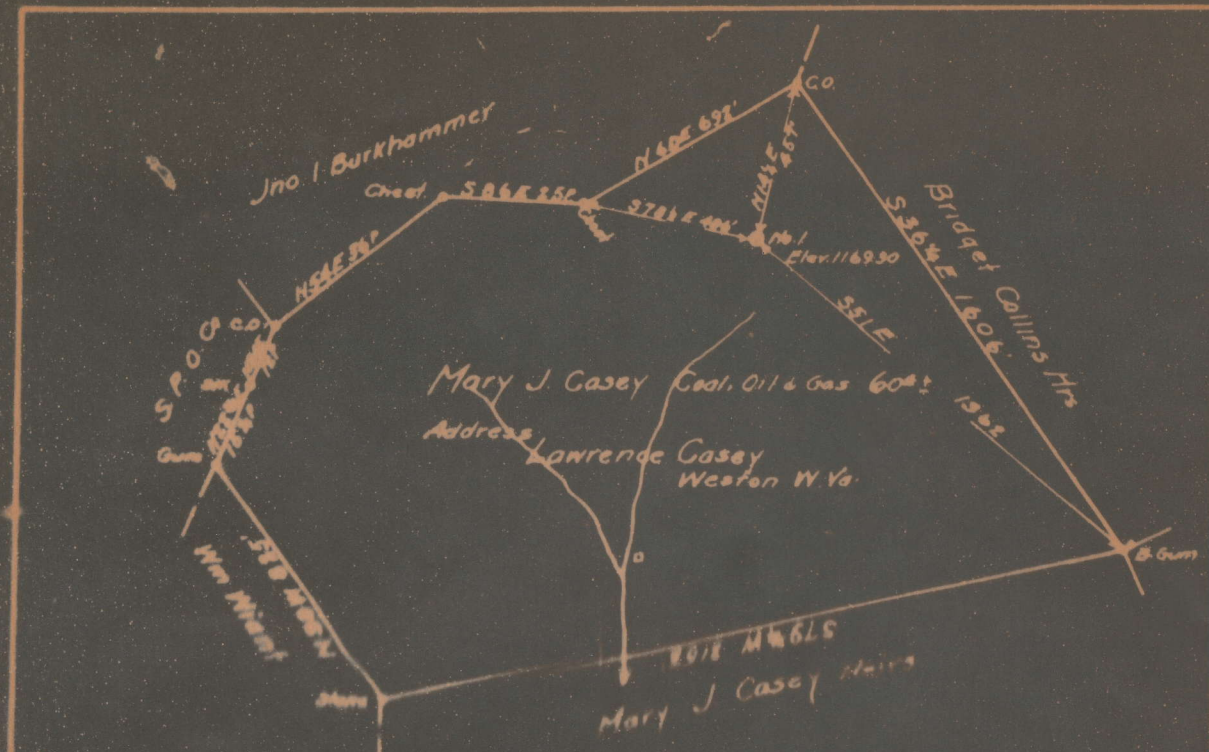
Quad GILMER 7 1/2'

County LEWIS

District COURT HOUSE

WELL LOCATION MAP

File No. 041-93A



Jan 93-A

Plat for Abandonment of South Penn Oil Gas
 Well No. 1 Mary J. Casey - Court House
 DISTRICT COURT COUNTY OF W. VA.

Scale 1" = 400'
 9-24-35

93A

Court House District, Lewis County, W. Va.
 South Penn Oil Co., Chamber of Commerce Bldg., Pittsburgh, Pa.
 On 131 acres, surface and mineral rights owned by Heirs of Mary J.
 Casey, Thos. J. Casey, Agent, 122 Anderson St., N. S.,
 Pittsburgh, Pa.

Elevation, 1169.30' L.

16' conductor; 10" casing, 230' (pulled); 8 1/2", 1000' (pulled);
 6-5/8", 2250'.

Coal was encountered at 740-743'.

Abandonment reported to Dept. of Mines Nov. 6, 1935.

Oil well.

	Top.	Bottom.
Pittsburgh Coal	740	743
Salt Sand	1543	1700
Maxton Sand	2205	2220
Big Lime	2225	2295
Big Injun Sand	2295	2420
Stray Sand	2810	2820
Gordon Sand (oil, 2837')	2834	2860
Total depth		2860

Jew
93A

**AFFIDAVIT IN TRIPLICATE TO TIME AND MANNER OF
PLUGGING AND FILLING WELL**

(REQUIRED BY SECTION 2, ARTICLE 4, CHAPTER 22 OF THE CODE)

**WEST VIRGINIA DEPARTMENT OF MINES
OIL AND GAS DIVISION**

Heirs of Mary J. Casey,
COAL OPERATOR OR OWNER
c/o Thos. J. Casey, Agt.
122 Anderson St.,
N. S. Pittsburgh, Pa.

SOUTH PENN OIL COMPANY
Chamber of Commerce Bldg.
Pittsburgh, Pa.

March 4, 19 36

WELL AND LOCATION
Court House District
Lewis County

Well No. 1
Mary J. Casey Farm

AFFIDAVIT TO BE MADE IN TRIPLICATE. ONE COPY TO BE MAILED BY REGISTERED MAIL TO THE DEPARTMENT. ONE COPY TO BE RETAINED BY THE WELL OPERATOR AND THE THIRD COPY (AND EXTRA COPIES IF REQUIRED) TO BE MAILED TO EACH COAL OPERATOR ABOVE NAMED AT THEIR RESPECTIVE ADDRESSES.

AFFIDAVIT

STATE OF WEST VIRGINIA,

COUNTY OF Harrison

J. F. Black

being first duly sworn according to law depose and say that they are experienced in the work of plugging

and filling oil and gas wells and were employed by South Penn Oil Company, well operator, and participated in the work of plugging and filling the above well, that said work was commenced on the

16th day of January, 19 36, and that the well was plugged and filled in the following manner:

Manner in which ~~sand~~ was plugged

Total Depth 2860'. Filled with non-porous material to 2790', -20' above Stray Sand. Set wood plug 2790' - 2797'. Set cement plug 2787' - 2777', - sealing Stray and Gordon Sands. Set bridge at 2450', - 30' below Big Injun Sand. Pulled 6-5/8" casing. Filled with non-porous material to 2185', - 20' above Maxon Sand. Set wood plug 2185' - 2182'. Set cement plug 2182' - 2172', - sealing Maxon Sand. Set bridge 1730', - 30' below Salt Sand. Filled with non-porous material to 1523', - 20' above Salt Sand. Set wood plug 1523' - 1520'. Set cement plug 1520' - 1517', - sealing Salt Sand. Set bridge 783', - 40' below Pittsburgh Coal. ~~Set vent pipe 783' to surface. Set Morning Glory Packer 773', - 30' below Pittsburgh Coal. Vent pipe perforated 783' - 773'. Vent pipe cemented 783' to 720', - 20' above Pittsburgh Coal. Filled with non-porous material to surface.~~

Description of monument.

Erected monument, - 2" pipe 8' above ground 2" Tee
2 - 2" Ells pointing downward. 2' cement cone
around vent pipe, 2' above ground.