

Latitude

Longitude

	1.88s
	1.86w

Topo Location

7.5' Loc. _____ 15' Loc. _____
 _____ (calc.) _____

Company _____

Farm _____

15' Quad _____
(sec.)

7.5' Quad Vadis

District Freemans Creek

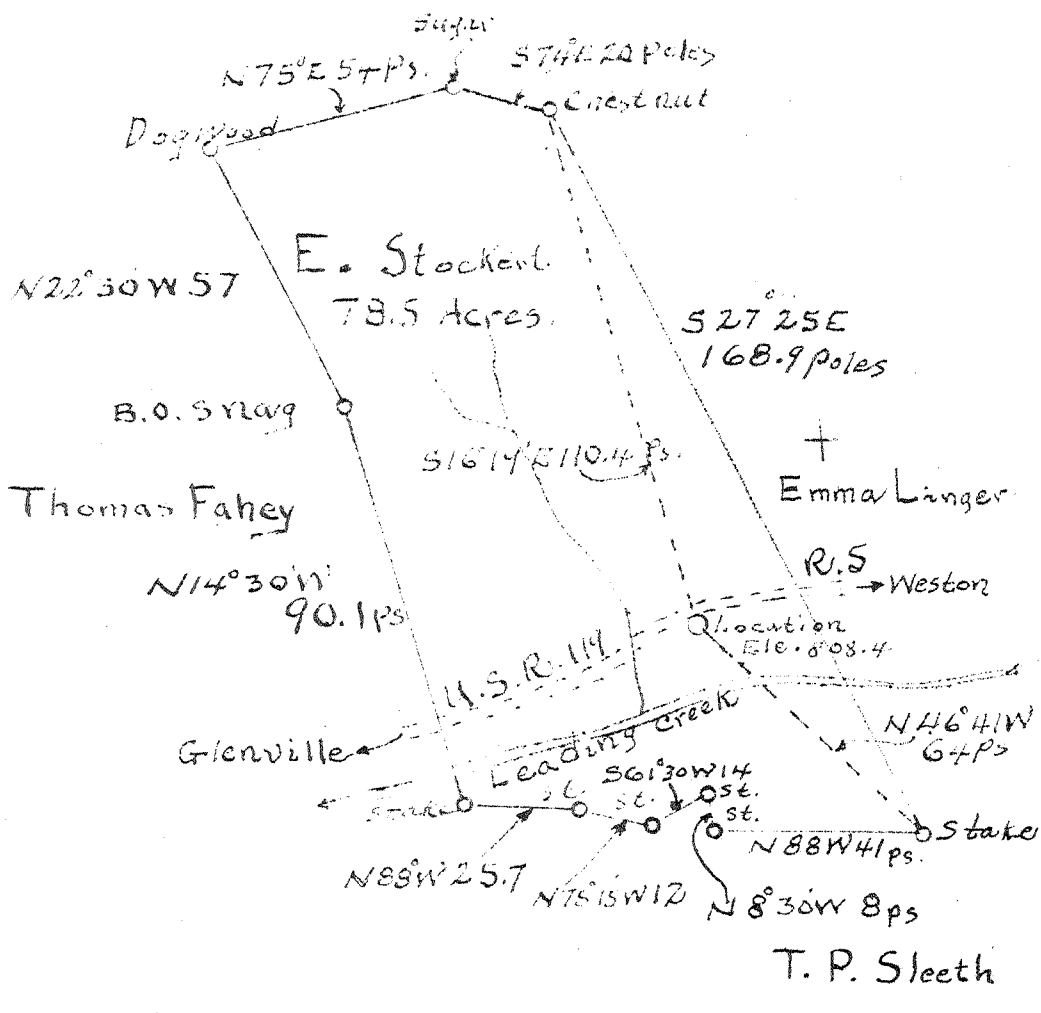
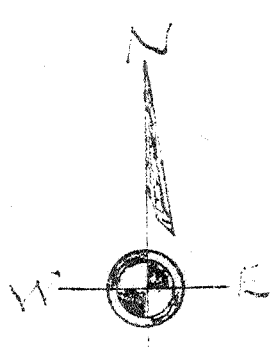
WELL LOCATION PLAT

County 041 Permit 30200

Latitude 39° 45'

Longitude 80° 40'

500
1000
1500
2000
2500
3000
3500
4000
4500
5000
5500
6000
6500
7000
7500
8000
8500
9000
9500
10000



W-2.3
S-51/

Company D. E. Penney
 Address Weston, W.Va.
 Farm E. Stockert
 Tract 1 Acres 78.5 Lease No. _____
 Well (Farm) No. 2 Serial No. _____
 Elevation (Spirit Level) 808.4
 Quadrangle Vadis SW
 County Lewis District Freeman's Creek
 Engineer M. L. B. Linger
 Engineer's Registration No. 261
 File No. _____ Drawing No. _____
 Date Oct. 9, 1940 Scale 1" = 40 Poles

STATE OF WEST VIRGINIA
 DEPARTMENT OF MINES
 OIL AND GAS DIVISION
 CHARLESTON

WELL LOCATION MAP
 FILE NO. LEW-200A

+ Denotes location of well on United States Topographic Maps, scale 1 to 62,500, latitude and longitude lines being represented by border lines as shown.

- Denotes one inch spaces on border line of original tracing.