

38°52'30"

Latitude



Longitude

80°25'00"

Topo Location

7.5' Loc. \_\_\_\_\_ 15' Loc. \_\_\_\_\_  
\_\_\_\_\_ (calc.) \_\_\_\_\_

Company Mud Lick Oil & Gas Co

Farm EG Dohsson #3

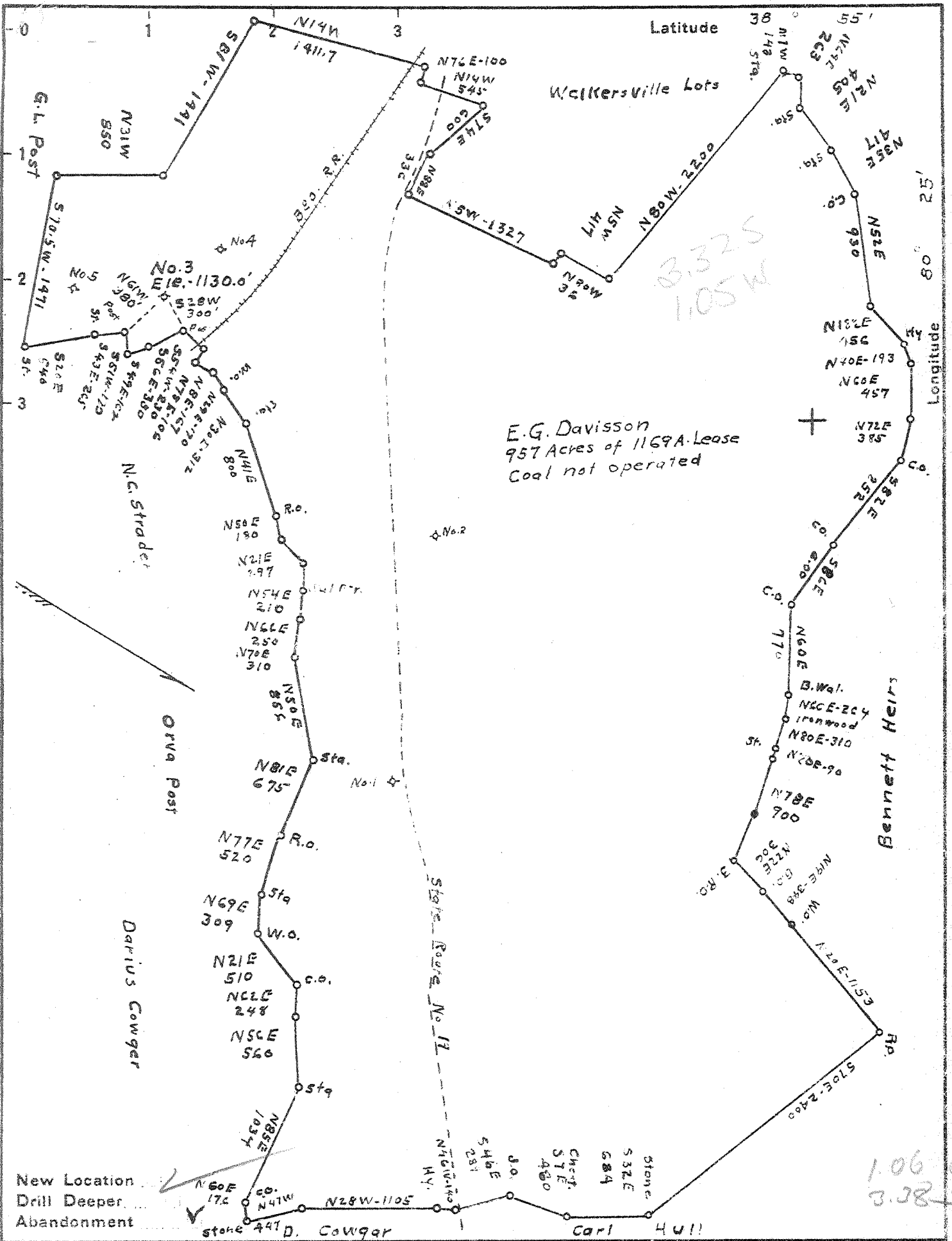
15' Quad \_\_\_\_\_  
(sec.)

7.5' Quad Walkersville

District Collins Settlement

**WELL LOCATION PLAT**

County 041 Permit 30211



Company Mudlick Oil & Gas Co.  
 Address 612 Keystone Bldg. Pittsburg Pa.  
 Farm E.G. Davisson  
 Tract \_\_\_\_\_ Acres 1169 Lease No. \_\_\_\_\_  
 Well (Farm) No. Three Serial No. 0-11  
 Elevation (Spirit Level) 1130.0  
 Quadrangle Crawford  
 County Lewis District Collins Settlement  
 Engineer C.O. Newing  
 Engineer's Registration No. 811  
 File No. \_\_\_\_\_ Drawing No. \_\_\_\_\_  
 Date May 6 1941 Scale 1" = 1000'

STATE OF WEST VIRGINIA  
 DEPARTMENT OF MINES  
 OIL AND GAS DIVISION  
 CHARLESTON

WELL LOCATION MAP  
 FILE NO. LEW-211A

+ Denotes location of well on United States Topographic Maps, scale 1 to 62,500, latitude and longitude lines being represented by border lines as shown.

- Denotes one inch spaces on border line of original tracing.

STATE OF WEST VIRGINIA  
DEPARTMENT OF MINES  
OIL AND GAS DIVISION

297

WELL RECORD

Permit No. 71-A Oil or Gas Well Oil Well  
(KIND)

Company Ind. Nat. Oil & Gas Company  
Address 612 Keystone Building  
Farm E. G. Davidson Acres 1120  
Location (waters) \_\_\_\_\_  
Well No. 5-71 Elev. 1130  
District Collins Settlement County Lewis  
The surface of tract is owned in fee by E.G. Davidson Estate  
Address Winton, W. Va.  
Mineral rights are owned by E.G. Davidson Estate  
Address Winton, W. Va.  
Drilling commenced 6-21-27  
Drilling completed 7-22-27  
Date shot \_\_\_\_\_ Depth of shot 2005-2015'  
Open Flow /10ths Water in \_\_\_\_\_ Inch  
/10ths Merc. in \_\_\_\_\_ Inch  
Volume \_\_\_\_\_ Cu. Ft.  
Rock Pressure \_\_\_\_\_ lbs \_\_\_\_\_ hrs.  
Oil \_\_\_\_\_ bbls., 1st 24 hrs.  
Fresh water \_\_\_\_\_ feet \_\_\_\_\_ feet  
Salt water \_\_\_\_\_ feet \_\_\_\_\_ feet

Casing and Tubing	Used in Drilling	Left in Well	Packers
Size			
16			Kind of Packer
13			
10	165	None	Size of
8 1/4	730	None	
6 5/8	1454	1454	Depth set
5 3/16			
3			Perf. top
2	2005	2005	Perf. bottom
Liners Used			Perf. top
			Perf. bottom

CASING CEMENTED \_\_\_\_\_ SIZE \_\_\_\_\_ No. Ft. \_\_\_\_\_ Date \_\_\_\_\_  
No Coal Encountered  
COAL WAS ENCOUNTERED AT \_\_\_\_\_ FEET \_\_\_\_\_ INCHES  
\_\_\_\_\_ FEET \_\_\_\_\_ INCHES FEET \_\_\_\_\_ INCHES  
\_\_\_\_\_ FEET \_\_\_\_\_ INCHES FEET \_\_\_\_\_ INCHES

Formation	Color	Hard or Soft	Top	Bottom	Oil, Gas or Water	Depth Found	Remarks
Conductor				15			
Sand			25	25			
Line			28	117			
Slate			107	274			
Sand			274	290			
Slate			300	670			
Sand			670	695			
Sand			695	725			
Slate			725	737			
Sand			737	960			
Slate			960	1050			Gas at 920' Show Oil 905'
Sand			1050	1170			
Shale			1175	1255			
Sand			1255	1250			
Shale			1250	1275			
Sand			1275	1290			
Slate			1300	1300			
Sand			1300	1330			
Slate			1330	1342			
Sand			1342	1405			
Big Line			1405	1455			
Big Injun			1455	1560			
Slate			1560	1600			
Sand			1600	1650			
Slate			1650	1720			
Sand			1720	1735			Water 1730'-broken
Slate			1735	1815			
Shale			1815	1975			
Carbon Sand			1975	2005			Oil & Gas 2011' to 2015'
Slate			2005	2005			Steel Line from 2015'
Total Depth				2005			

This well after shot and cleaned out and put on pump made  
8 barrels per day.  
Shot with 60 cts.

