

Latitude

+.515  
|.16w

Longitude

Topo Location

7.5' Loc. \_\_\_\_\_ 15' Loc. \_\_\_\_\_  
\_\_\_\_\_ (calc.) \_\_\_\_\_

Company \_\_\_\_\_

Farm \_\_\_\_\_

15' Quad \_\_\_\_\_  
(sec.)

7.5' Quad Petersen

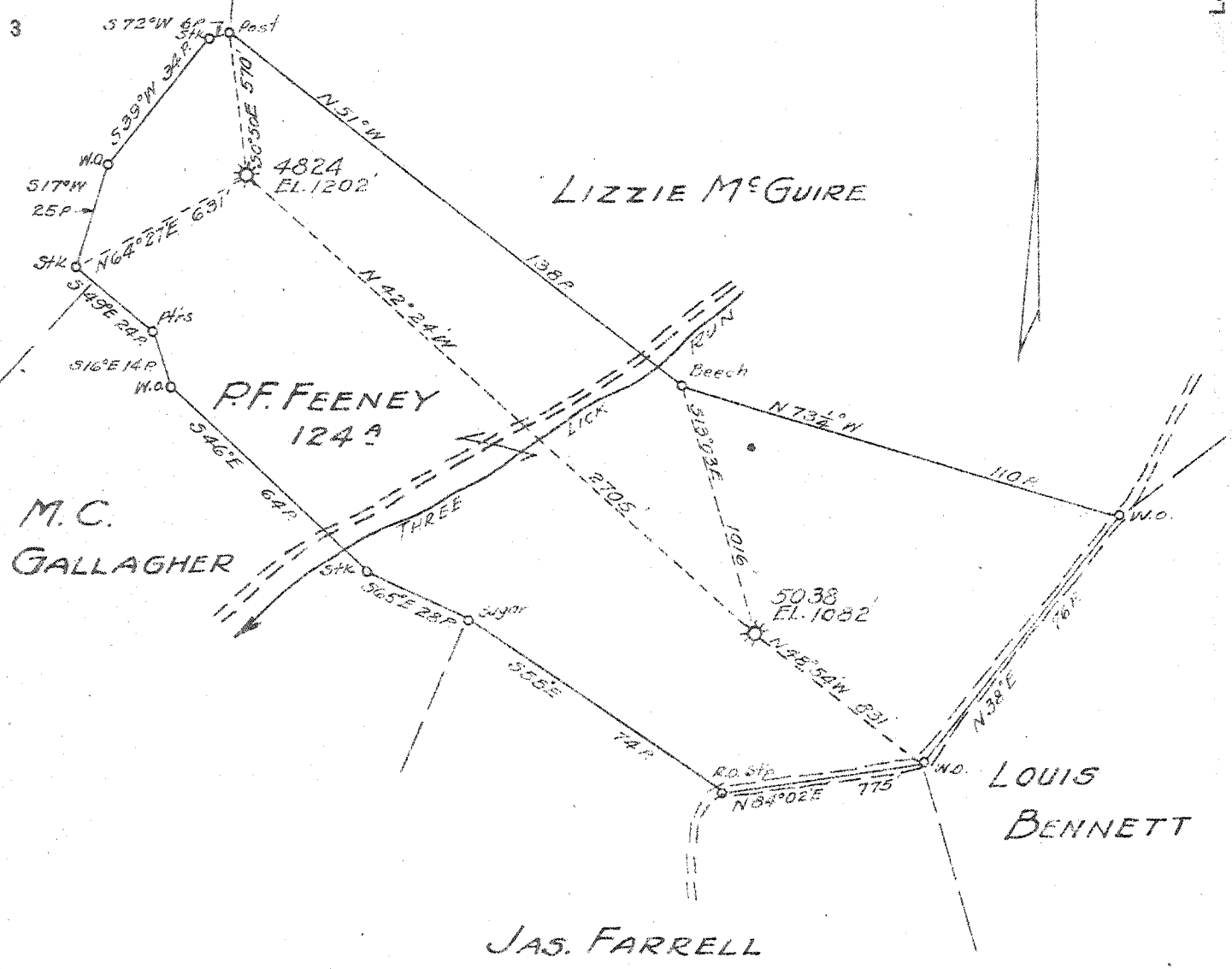
District Oldmans Settlement

WELL LOCATION PLAT

County 041 Permit 30270

47 5  
22 W

J.B. WILLIAMS



MAP SHEET 71 SQ. 5-38 E-1 FB. 562 P. 13 & 14

Company	HOPE NATURAL GAS CO.
Address	CLARKSBURG W.VA.
Farm	P.F. FEENEY
Tract	Acres 124 Lease No. 24586
Well (Farm) No.	Serial No. AS SHOWN
Elevation (Spirit Level)	AS SHOWN
Quadrangle	BURNSVILLE PETERSON 7 1/2
County	LEWIS District COLLINS SETTLEMENT
Engineer	W.M. Bowen
Engineer's Registration No.	900
File No.	Drawing No.
Date	9-25-44 Scale 1" = 40 POLES

STATE OF WEST VIRGINIA  
 DEPARTMENT OF MINES  
 OIL AND GAS DIVISION  
 CHARLESTON

WELL LOCATION MAP  
 FILE NO. LEW-270-A

+ Denotes location of well on United States Topographic Maps, scale 1 to 62,500, latitude and longitude lines being represented by border lines as shown.  
 - Denotes one inch spaces on border line of original tracing.



350

STATE OF WEST VIRGINIA  
DEPARTMENT OF MINES  
OIL AND GAS DIVISION

WELL RECORD

Permit No. 2707A

Oil or Gas Well (KIND)

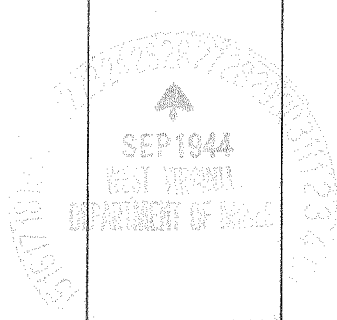
Company Hope Natural Gas Company.  
Address 445 West Main St. Clarksburg, W. Va.  
Farm P.F. Feeney Acres 124  
Location (waters) \_\_\_\_\_  
Well No. 4824 Elev. 1202  
District Collins Settlement County Lewis  
The surface of tract is owned in fee by \_\_\_\_\_  
Address \_\_\_\_\_  
Mineral rights are owned by \_\_\_\_\_  
Address \_\_\_\_\_  
Drilling commenced June 19, 1917  
Drilling completed July 11, 1917  
Date Shot \_\_\_\_\_ From \_\_\_\_\_ To \_\_\_\_\_  
With \_\_\_\_\_  
Open Flow \_\_\_\_\_ /10ths Water in \_\_\_\_\_ Inch  
\_\_\_\_\_ /10ths Merc. in \_\_\_\_\_ Inch  
Volume \_\_\_\_\_ Cu. Ft.  
Rock Pressure \_\_\_\_\_ lbs. \_\_\_\_\_ hrs.  
Oil \_\_\_\_\_ bbls., 1st 24 hrs.  
Fresh water none recorded feet \_\_\_\_\_ feet  
Salt water none recorded feet \_\_\_\_\_ feet

Casing and Tubing	Used in Drilling	Left in Well	Packers
Size			Kind of Packer
16			
13			
10	150	150	Size of
8 1/4	875	875	
6 3/8	1742	1742	Depth set
5 3/16			
3			Perf. top
2			Perf. bottom
Liners Used			Perf. top
			Perf. bottom

CASING CEMENTED Not cemented SIZE \_\_\_\_\_ No. Ft. \_\_\_\_\_ Date \_\_\_\_\_

COAL WAS ENCOUNTERED AT None recorded FEET \_\_\_\_\_ INCHES \_\_\_\_\_ FEET \_\_\_\_\_ INCHES \_\_\_\_\_ FEET \_\_\_\_\_ INCHES \_\_\_\_\_ FEET \_\_\_\_\_ INCHES

Formation	Color	Hard or Soft	Top	Bottom	Oil, Gas or Water	Depth Found	Remarks
Little Dunkard			660	715			
Big Dunkard			745	792			
Gas sand			825	840			
First Salt		4	850	1090			
Second Salt			1100	1280			
Third Salt			1640	1748	gas	1685	
Maxon			1842	1860	gas	1844-1853	
Big Lime			1872	1914	gas	1912	
Total depth				1975			



Formation	Color	Hard or Soft	Top	Bottom	Oil, Gas or Water	Depth Found	Remarks

Date September 22, 1944, 194

APPROVED Hope Natural Gas Company., Owner

By Ass't. to Gen. Sup't.  
(Title)