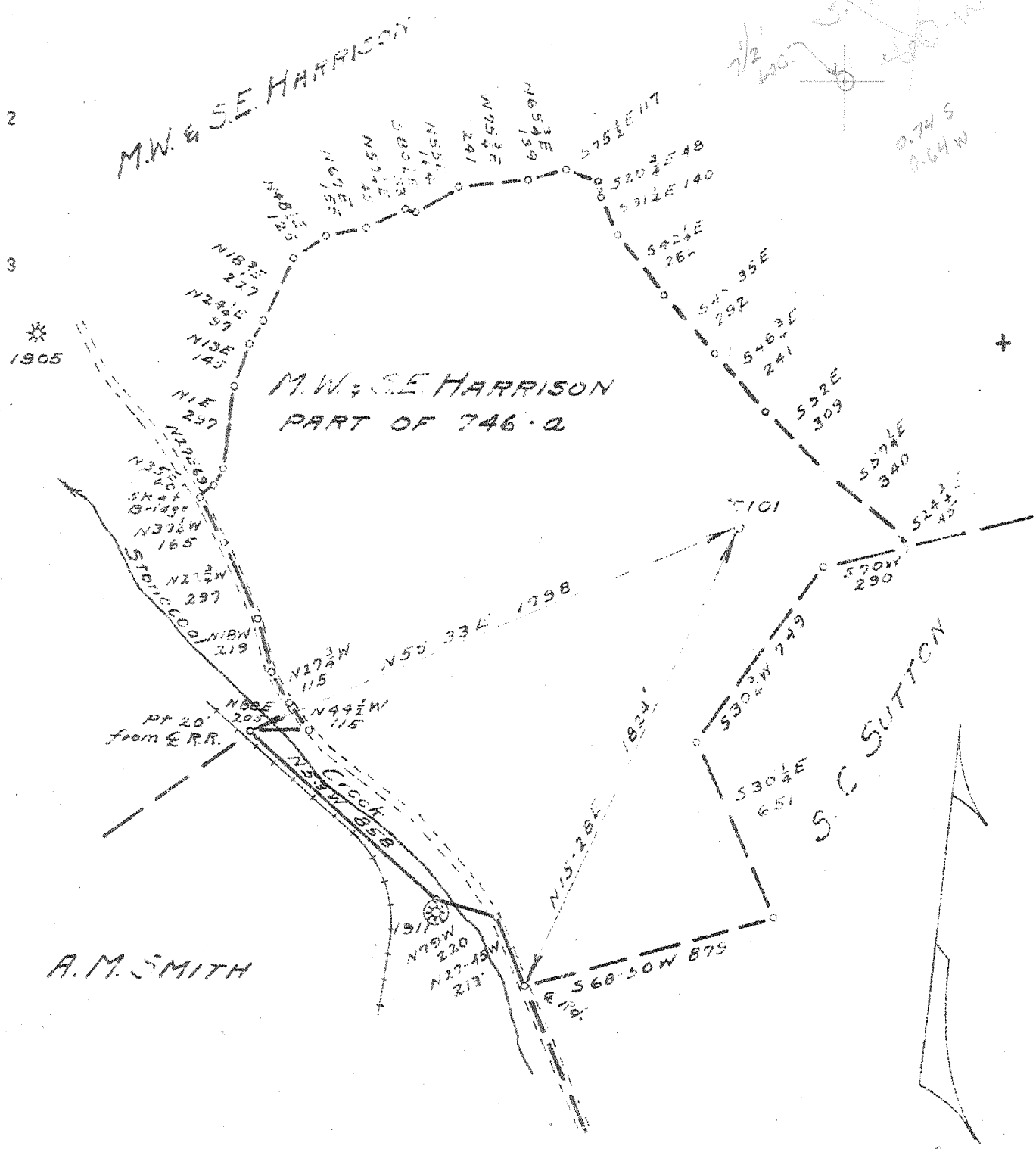


Latitude 39 05  
39° 02' 30"

Longitude 80 25



New Location  
Drill Deeper  
Abandonment X

Company Pittsburgh & W. Va. Gas Co.  
 Address Clarksburg W. Va.  
 Farm M.W. & S.E. HARRISON  
 Tract \_\_\_\_\_ Acres 246 Lease No. 4501  
 Well (Farm) No. 5 Serial No. 7101  
 Elevation (Spirit Level) 1356  
 Quadrangle Weston S.W. 4 1/2 WESTON 76  
 County Lewis District Hackers Ck.  
 Engineer Jarrett Jeffries  
 Engineer's Registration No. 1084  
 File No. 137/156 Drawing No. \_\_\_\_\_  
 Date 5-18-45 Scale 1"=500'

STATE OF WEST VIRGINIA  
 DEPARTMENT OF MINES  
 OIL AND GAS DIVISION  
 CHARLESTON

WELL LOCATION MAP  
 FILE NO. LEN-294-A

+ Denotes location of well on United States Topographic Maps, scale 1 to 62,500. latitude and longitude lines being represented by border lines as shown.  
 - Denotes one inch spaces on border line of original tracing



STATE OF WEST VIRGINIA  
DEPARTMENT OF MINES  
OIL AND GAS DIVISION

378

WELL RECORD

Permit No. 294-A

Oil or Gas Well "GAS"  
(KIND)

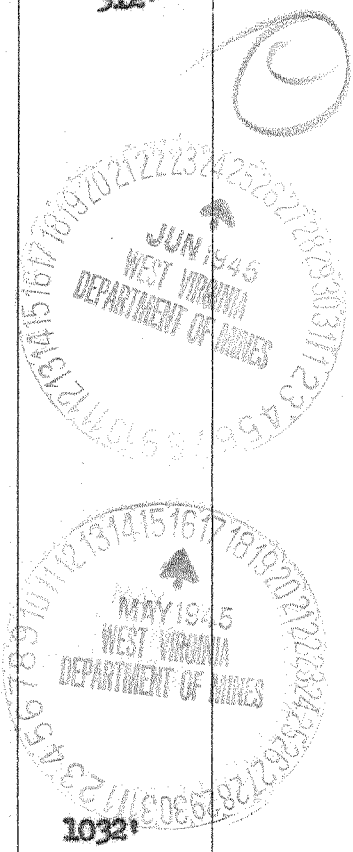
Company Pittsburgh & West Va. Gas Company.  
Address Clarksburg, West Va.,  
Farm M.W.&S.R. Harrison Acres 746  
Location (waters) Weston S/N. 4-1  
Well No. 7101 Elev. 1336' L.  
District Hackers Creek County Lewis  
The surface of tract is owned in fee by M.W.Harrison Mrs.  
S R. H. Harrison Address Weston, W.Va.,  
Mineral rights are owned by R. H. Harrison et al.  
Address Weston, West Va.,  
Drilling commenced July 29, 1916  
Drilling completed September 9, 1916  
Date Shot \_\_\_\_\_ From \_\_\_\_\_ To \_\_\_\_\_  
With \_\_\_\_\_  
Open Flow \_\_\_\_\_ /10ths Water in \_\_\_\_\_ Inch  
\_\_\_\_\_ /10ths Merc. in \_\_\_\_\_ Inch  
Volume \_\_\_\_\_ Cu. Ft.  
Rock Pressure \_\_\_\_\_ lbs. \_\_\_\_\_ hrs.  
Oil \_\_\_\_\_ bbls., 1st 24 hrs.  
Fresh water \_\_\_\_\_ feet \_\_\_\_\_ feet  
Salt water \_\_\_\_\_ feet \_\_\_\_\_ feet

Casing and Tubing	Used in Drilling	Left in Well	Packers
Size			Kind of Packer
16			
13			
10	318'	318'	Size of
8 1/4	1084'	1084'	
6 5/8	1838'	1838'	Depth set
5 3/16	2471'	Pulled.	
3			Perf. top
2			Perf. bottom
Liners Used			Perf. top
			Perf. bottom

CASING CEMENTED \_\_\_\_\_ SIZE \_\_\_\_\_ No. Ft. \_\_\_\_\_ Date \_\_\_\_\_

COAL WAS ENCOUNTERED AT 148 FEET 24 INCHES  
205 FEET 60 INCHES FEET INCHES  
FEET INCHES FEET INCHES

Formation	Color	Hard or Soft	Top	Bottom	Oil, Gas or Water	Depth Found	Remarks
Red Rock	Red	Soft	0	17			
Sand	Gray	"	17	130			
Slate	Black	"	130	148			
Coal	"	"	148	150			
Sand	Dark	"	150	167			
Slate	Black	"	167	205			
Coal	"	"	205	210			
Slate	"	"	210	280			
Line	White	Hard	280	295			
Red Rock	Red	Soft	295	305			
Line	"	"	305	317	Water	312'	
Red Rock	"	"	317	400			
Line	White	Hard	400	415	Water		
Slate	"	Soft	415	435			
Line	"	Hard	435	445			
Red Rock	Red	Soft	445	470			
Slate	Black	"	470	490			
Line	Gray	Hard	490	520			
Red Rock	Red	Soft	520	555			
Line	Gray	"	555	563			
Red Rock	Red	"	563	605			
Sand	Gray	Hard	605	635			
Slate	Black	Soft	635	640			
Little Dunkard	Gray	Hard	640	666			
Line	"	"	666	695			
Slate	Dark	Soft	695	705			
Big Dunkard	White	Hard-Soft	705	803			
Slate	"	Soft	803	810			
Line	"	Hard	810	820			
Slate	"	Soft	820	835			
Line	"	Hard	835	856			
Slate	"	Soft	856	864			
Line	Dark	Hard	864	886			
Slate	White	Soft	886	892			
1st. Salt Sand	Dark	Hard	892	965			
Slate	"	Soft	965	1017			
2nd. Salt Sand	"	Hard	1017	1068	Water	1032'	
Line	"	Soft	1068	1120			
3rd. Salt Sand	Gray	Hard	1120	1190			



Formation	Color	Hard or Soft	Top	Bottom	Oil, Gas or Water	Depth Found	Remarks
late lime	Dark Gray	Soft	1190	1200			
and	"	Hard	1200	1280			
late	"	"	1280	1306			
and	Black	Soft	1306	1350			
late	Gray	Hard	1350	1400			
late	Black	Soft	1400	1404			
late&Shells	Dark	Soft&Hard	1404	1457			
th.Salt Sand	"	Hard	1457	1515	Water	1473'	2 Bailers Hr.
ed Rock	Red	Soft	1515	1530			
lime	Gray	Hard	1530	1608			
axon Sand	White	Hard-Close	1608	1636			
ed Rock	Red	Soft	1636	1765			
ittle Lime	Dark	Hard-Soft	1765	1794			
late	"	Soft	1794	1804			
ig Lime	White	Hard	1804	1858			
ig Injun	Gray	"	1858	1986			
late	Soft Blk.	Soft	1986	2025			
and	Gray	Hard	2025	2033			
late&Shells	Dark	HS&Soft	2033	2209			
0 Ft.Sand	Gray	Hard	2209	2239			
late	Dark	Soft	2239	2294 -97			
0 Ft.Sand	Gray	Hard	2294	2308 -20	Gas	2297-2300'	
late	Dark	Soft	2308	2317			
0 Ft.Sand	Gray	Hard	2317	2363			
ed Slate-Lime		Soft&Hard	2363	2455			
ordon Sand	Gray	Hard	2455	2475			
late&Shells	White	Soft&Hard	2475	2613			
and	Brown	Hard	2613	2620			
late&Shells		Hard&Soft	2620	2661			
th.Sand	Brown	Soft	2661	2664	Gas	2662'	
late	White	"	2664	2698			
Total Depth				2698			
Plugged and filled back to 2471'							
Lead Plug 2471'							

May 14, 1945

Date \_\_\_\_\_, 194

PITTSBURGH & WEST VA GAS COMPANY.

APPROVED *W. C. McMasters*, Owner

W. C. McMasters

By \_\_\_\_\_

(Title)