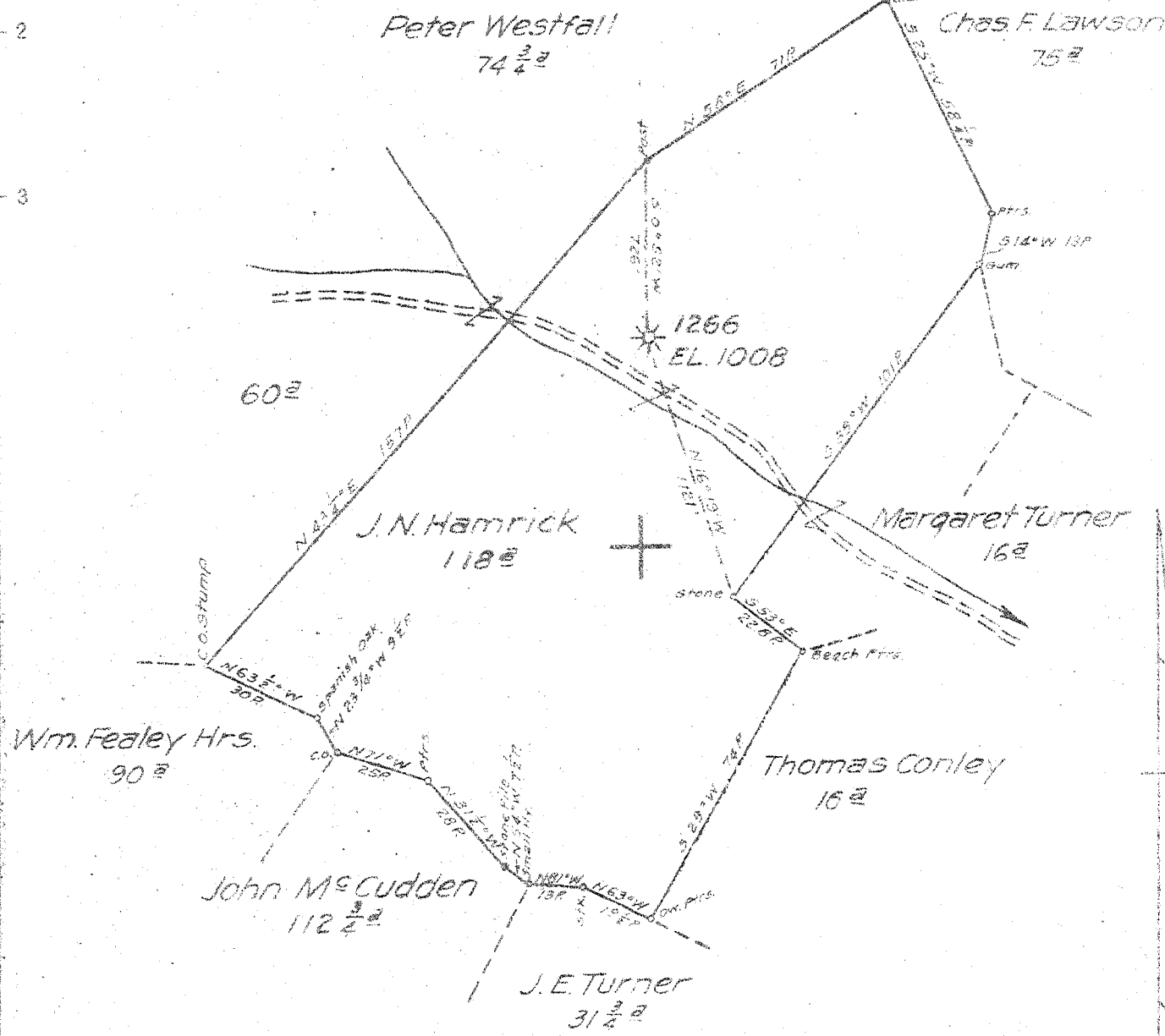


5, 30 S  
3102 W

Longitude 80 30



New Location   
 Drill Deeper   
 Abandonment

Map Sheet 71 Squares S31E2 FB 549 P31-32

Company Hope Natural Gas Co.  
 Address Clarksburg, W Va.  
 Farm J. N. Hamrick  
 Tract \_\_\_\_\_ Acres 118 Lease No. 2417  
 Well (Farm) No. \_\_\_\_\_ Serial No. 1266  
 Elevation (Spirit Level) 1008  
 Quadrangle Vadis  
 County Lewis District Courthouse  
 Engineer Wm. Bowen  
 Engineer's Registration No. 900  
 File No. \_\_\_\_\_ Drawing No. \_\_\_\_\_  
 Date 1-7-46 Scale 1" = 40 P.

STATE OF WEST VIRGINIA  
 DEPARTMENT OF MINES  
 OIL AND GAS DIVISION  
 CHARLESTON

**WELL LOCATION MAP**  
 FILE NO. LEW-313-A

+ Denotes location of well on United States Topographic Maps, scale 1 to 62,500, latitude and longitude lines being represented by border lines as shown.  
 - Denotes one inch spaces on border line of original tracing.



STATE OF WEST VIRGINIA  
DEPARTMENT OF MINES  
OIL AND GAS DIVISION

406

Permit No. 313-A

WELL RECORD

Oil or Gas Well (KIND)

Company Hope Natural Gas Company.  
 Address 445 West Main St. Clarksburg, W.Va.  
 Farm J.W. Hamrick Acres 118  
 Location (waters) \_\_\_\_\_  
 Well No. 1266 Elev. 1008  
 District Courthouse County Lewis  
 The surface of tract is owned in fee by \_\_\_\_\_  
 Address \_\_\_\_\_  
 Mineral rights are owned by \_\_\_\_\_  
 Address \_\_\_\_\_  
 Drilling commenced May 19, 1909  
 Drilling completed July 23, 1909  
 Date Shot \_\_\_\_\_ From \_\_\_\_\_ To \_\_\_\_\_  
 With \_\_\_\_\_  
 Open Flow \_\_\_\_\_ /10ths Water in \_\_\_\_\_ Inch  
 \_\_\_\_\_ /10ths Merc. in \_\_\_\_\_ Inch  
 Volume \_\_\_\_\_ Cu. Ft.  
 Rock Pressure \_\_\_\_\_ lbs. \_\_\_\_\_ hrs.  
 Oil \_\_\_\_\_ bbls., 1st 24 hrs.  
 Fresh water none recorded feet \_\_\_\_\_ feet  
 Salt water none recorded feet \_\_\_\_\_ feet

Casing and Tubing	Used in Drilling	Left in Well	Packers
Size			
16			Kind of Packer
13			
10	174	174	Size of
8 1/4	929	929	
6 5/8	1907	1917	Depth set
5 3/16	2476	2476	
3			Perf. top
2	2730	Pulled	Perf. bottom
Liners Used			Perf. top
			Perf. bottom

CASING CEMENTED Not cemented SIZE \_\_\_\_\_ No. Ft. \_\_\_\_\_ Date \_\_\_\_\_  
 COAL WAS ENCOUNTERED AT 220 FEET 60 INCHES  
 \_\_\_\_\_ FEET \_\_\_\_\_ INCHES \_\_\_\_\_ FEET \_\_\_\_\_ INCHES  
 \_\_\_\_\_ FEET \_\_\_\_\_ INCHES \_\_\_\_\_ FEET \_\_\_\_\_ INCHES

Formation	Color	Hard or Soft	Top	Bottom	Oil, Gas or Water	Depth Found	Remarks
Coal			220	225			
Dunkard			600	720			
Salt sand			865	1525			
Maxon			1560	1650			
Lime			1830	1900	gas	1850	
Big Injun			1900	2030			
Gentz			2200	2235			
Fifty foot 4			2275	2310			
Thirty foot			2390	2420			
Stray			2440	2450			
Gordon			2455	2465	gas	2460	
Fourth			2488	2499	gas	2491 2498	
Fifth			2675	2680	gas	2677	
Total depth				2730			

