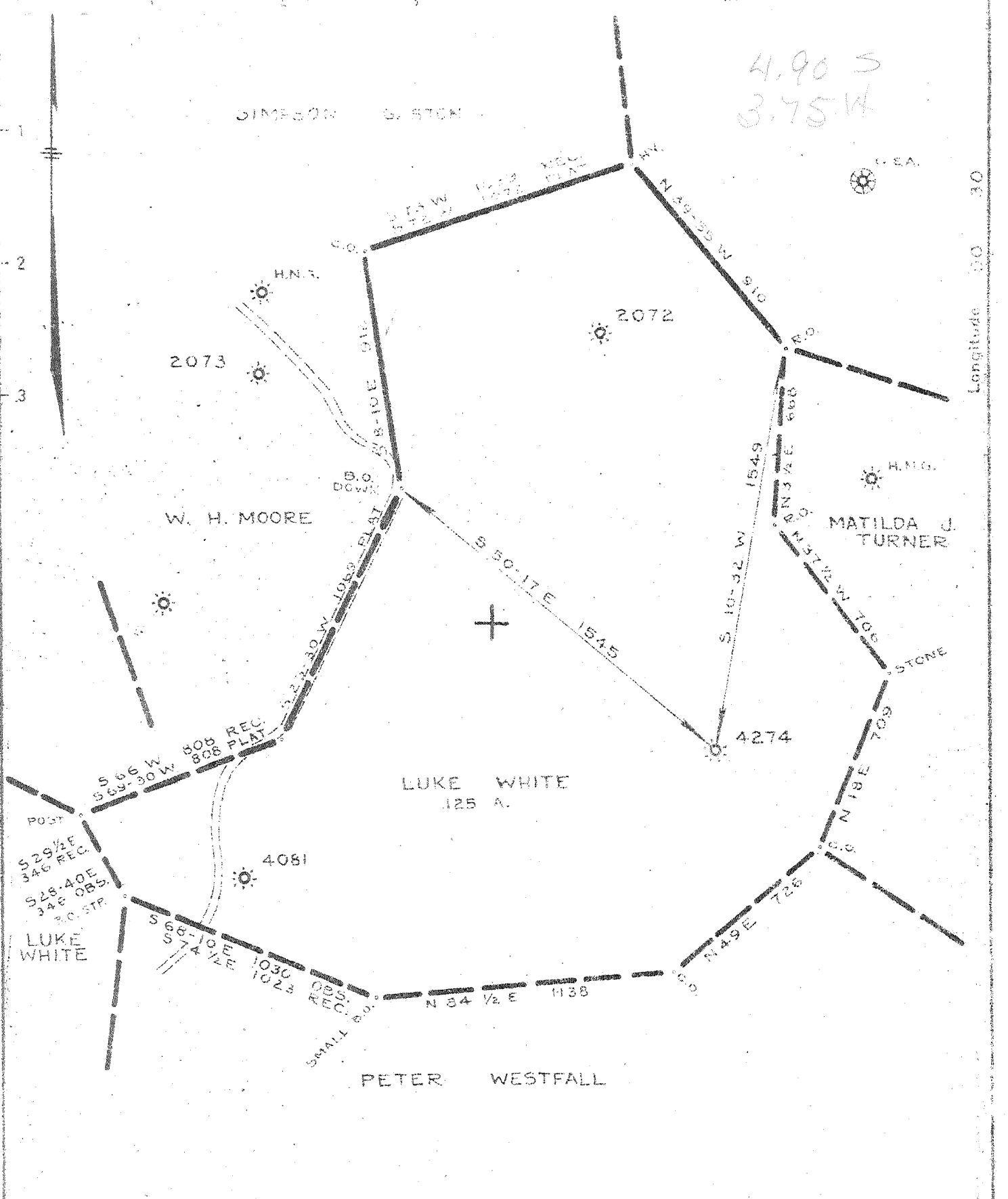


4.90 S  
3.75 W



New Location  
Drill Deeper  
Abandonment

Company PITTSBURGH & W. VA. GAS CO.  
 Address CLARKSBURG, W. VA.  
 Farm LUKE WHITE ET UX  
 Tract \_\_\_\_\_ Acres 125 Lease No. 4376  
 Well (Farm) No. 3 Serial No. 4274  
 Elevation (Spirit Level) 1215 V.A.  
 Quadrangle VAD15 S. E. 3 1/4  
 County LEWIS District COURT HOUSE  
 Engineer Jarrett Duffin  
 Engineer's Registration No. 1084  
 File No. V.139 - P.42 Drawing No. \_\_\_\_\_  
 Date JAN. 3, 1946 Scale 1" = 500'

STATE OF WEST VIRGINIA  
DEPARTMENT OF MINES  
OIL AND GAS DIVISION  
CHARLESTON

WELL LOCATION MAP  
FILE NO. LEW-314-A

+ Denotes location of well on United States Topographic Maps, scale 1 to 62,500. latitude and longitude lines being represented by border lines as shown.

- Denotes one inch spaces on border line of original tracing



STATE OF WEST VIRGINIA  
DEPARTMENT OF MINES  
OIL AND GAS DIVISION

403

WELL RECORD

Permit No. 314-A

Oil or Gas Well "GAS"

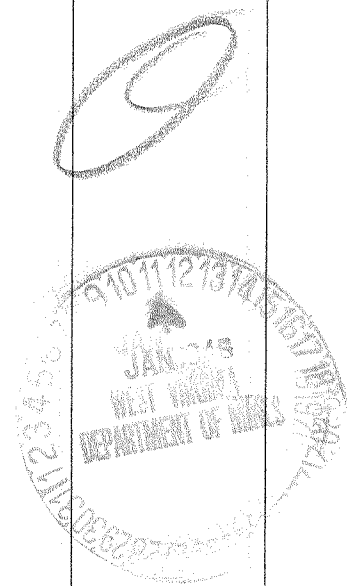
Company Pittsburgh & West Va Gas Company.  
Address Clarksburg, West Va.,  
Farm Luke White et ux Acres 125  
Location (waters) Vadis 3/2, 3-4  
Well No. 4274 Eley 1215' VA  
District Court House County Lewis  
The surface of tract is owned in fee by John White  
Address Weston, W. Va.,  
Mineral rights are owned by H. C. White  
703 West Pike St., Address Clarksburg, W. Va.,  
Drilling commenced May 13, 1914  
Drilling completed August 11, 1914  
Date Shot From To  
With

Casing and Tubing	Used in Drilling	Left in Well	Packers
Size			Kind of Packer
16			
13			
10	120'	120'	Size of
8 1/4	823'	None	
6 1/2	1972'	1972'	Depth set
5 3/16	2583'	2583'	
3			Perf. top
2			Perf. bottom
Liners Used			Perf. top
			Perf. bottom

Open Flow /10ths Water in \_\_\_\_\_ Inch  
/10ths Merc. in \_\_\_\_\_ Inch  
Volume \_\_\_\_\_ Cu. Ft.  
Rock Pressure \_\_\_\_\_ lbs. \_\_\_\_\_ hrs.  
Oil \_\_\_\_\_ bbls., 1st 24 hrs.  
Fresh water \_\_\_\_\_ feet \_\_\_\_\_ feet  
Salt water \_\_\_\_\_ feet \_\_\_\_\_ feet

CASING CEMENTED \_\_\_\_\_ SIZE \_\_\_\_\_ No. Ft. \_\_\_\_\_ Date \_\_\_\_\_  
COAL WAS ENCOUNTERED AT 710 FEET 3 1/2 INCHES  
\_\_\_\_\_ FEET \_\_\_\_\_ INCHES \_\_\_\_\_ FEET \_\_\_\_\_ INCHES  
\_\_\_\_\_ FEET \_\_\_\_\_ INCHES \_\_\_\_\_ FEET \_\_\_\_\_ INCHES

Formation	Color	Hard or Soft	Top	Bottom	Oil, Gas or Water	Depth Found	Remarks
Red Rock	Red	Soft	0	60			
Line	White	Hard	60	160			
Slate	"	Soft	160	310			
Sand	"	Hard	310	350			
Line	"	"	350	450			
Red Rock	Red	Soft	450	500			
Line	White	Hard	500	510			
Red Rock	Red	Soft	510	600			
Line	White	Open	600	610			
Red Rock	Red	Soft	610	660			
Line	White	Hard	660	720			
Slate	"	Shells	720	710			
Coal	Black	Soft	710	712			
Slate	Dark	"	712	750			
Line	White	Hard	750	765			
Slate	Black	Soft	765	800			
Red Cave	Red	"	800	814			
Line	White	Hard	814	824			
Big Dunkard	"	Open	824	849			
Line	"	Hard	849	859			
Slate	Black	"	859	907			
Line	White	"	907	1040			
Gas Sand	"	Medium	1040	1160			
Line	Dark	Hard	1160	1170			
1st. Salt Sand	White	"	1170	1224			
Slate	Dark	Soft	1224	1214			
2nd. Salt Sand	White	Hard	1214	1300			
Slate	Dark	Soft	1300	1365			
Line	White	Hard	1365	1375			
3rd. Salt Sand	"	Medium	1375	1615			
Slate			1615	1695			
Red Rock			1695	1745			
Slate&Shells			1745	1767			
Red Rock			1767	1845			
Maxon Sand			1845	1860			
Slate&Shells			1860	1940			
Pencil Cave			1940	1945			
Big Line			1945	2055			
Big Injun Sand			2055	2170			



Formation	Color	Hard or Soft	Top	Bottom	Oil, Gas or Water	Depth Found	Remarks
Slate&Shells			2170	2572			
Gordon Stray Sand			2572	2594	Gas	2583-2589'	
Slate			2594	2605			
Gordon Sand			2605	2627			
Slate			2627	2643			
4th. Sand			2643	2648			
Slate&Shells			2648	2796			
5th. Sand			2796	2802			
Un-recorded			2802	2829			
Total Depth.....				2829			

January 8th, 1946

Date \_\_\_\_\_, 194\_\_\_\_\_

PITTSBURGH & WEST VA GAS COMPANY.

APPROVED \_\_\_\_\_, Owner

By W. C. McIlhenny  
W. C. McIlhenny  
(Title)

# The Philadelphia Company of West Virginia

Record of Well No. 4274 Located on Lake White Farm Mar, 3014 19  
 Court House District Lewis County West Virginia State  
 Division "K" District No. 13 Drilled under Well Order  
 Rig built by John Craig Began May, 6th, 1914. Completed May, 11th. 14 19  
 Well drilled by Wm Barnhart Began May, 15th, 1914 Completed Aug, 4th. 14 19  
 Depth of Well 2829 feet. slate Size of Hole 5-3/16" Producing Gas  
 Elev: 12156

CASED WITH			REMARKS
AMOUNT	SIZE	KIND	
16'	13"	Wood	Reclaimed 2-22-46
120"	10"	Casing.	120' of 10"
823'	8 1/2"	"	8 1/2" reclaimed
1972'	6 5/8"	"	6-5/8"x 8 1/2" bot hole packer 727' of 6 5/8"
2578'	5 3/16"	"	6-5/8"x 5-3/16" steel shoe 2573' of 5 3/16" left 1244' of 6 5/8" casing in hole.

COAL VEINS NO NAME 740 to 742

NAME	TOP	BOT	FORMATIONS			REMARKS
			OIL	GAS	WATER	
Maxom Sand	1845	1860				60' little.
Big Lime	1945	2055				
Big Injun	2055	2170				
Gordon Stray	2572	2594				9/10th water in 5-3/16
Gordon Sand	2605	2627				
sand	2643	2648				
5th Sand	2796	2802				

2006  
2170  
435

Well plugged and abandoned 2-1-16 to 2-1-16: am. 17th. 1914  
at 9:55 am.

- Clay 2829-2825
- Leads 2825-2825
- Wood Plug 2825-2825
- Concrete 2825-2825
- Wood Plug 2825-2825
- Bridge Hole 2825
- Concrete 2825-2825
- Clay 2825-2825
- Lead Plug 2825-2825
- Clay 2825-2825
- Concrete 2825-2825
- Wood Plug 2825-2825
- Bridge Hole 2825
- Clay 2825-2825
- Lead Plug 2825-2825
- Clay 2825-2825
- Concrete 2825-2825
- Wood Plug 2825-2825
- Bridge Hole 2825
- Clay 2825-2825
- Lead Plug 2825-2825
- Concrete 2825-2825
- Clay 2825-2825
- Concrete 2825-2825

Apr 28-1916 - Well cleaned out and tubed with 2" by the P & M Gas Co  
 July 3rd 1917 - Well cleaned out and re-packed by P & M Gas Co

FIRST PRESSURE TEST IN 5-3/16" CASING *Minibus 7/17* REMARKS

30 Sec.	5#	lbs.	3	12
1 Min.	10	"	5	16
2 "	20	"	8	22 24/32
5 "	3/30	"	16	16 Min 50
10 "	4/38	"	28	20 68
25 "	5/45	"	50	
30 "	10/75	"		
	20/107	"		

Rock Pressure 230# in 24 hrs *Rock 175#*  
 Taken August 4th 1914  
 By R.J. Crabbe

WELL TUBED AND PACKED *Apr 28 1916*

*140 gts 2808' of 2" Tuby*  
*5 3/16 X 3" Well Packin*  
*12 gts 727' of 2" in Anchor*

*July 3-1917*  
*Retubed*  
*125 gts 2689' - 2" Tuby*  
*6" 108' - Anchor*  
*5 3/16 X 2" Well Packin*

FIRST PRESSURE TEST IN 2" TUBING REMARKS

30 Sec.	12	lbs.	1/2 6	Min Para 73-197	8/10 at 2" Tuby 7/17-16
1 Min.	17	"	1	12	4/10 " 2" " 7/3-17
2 "	25 35/41	"	2	16	
5 "	48	"	3	22	
10 "	72	"	4	27	
25 "	81	"	5	32	
30 "		"	10	50	24/100 98#
Rock Pressure	120	" in	29	68	

Taken 19  
 By

MATERIAL FOR THIS WELL RECEIVED FROM FOLLOWING SOURCES:

Old Rig from, Luke White #2072  
 3823, ft New lumber of John Collins, Weston, W. Va. R #2. @ \$20.00 @ mill. \$76.92  
 Part set rig iron of Parksbg. R & R Co.  
*used same Rig in calgout and Tuby Well 7/17-16*  
*" " " " " " " 7/3-17*

FORMATIONS

NAME	TOP	BOTTOM	OIL	GAS	WATER	REMARKS
Red Rock	00	60				
Lime	60	160				
Slate	160	310				
Sand	310	350				
Lime	350	450				
Red Rock	450	500				
Lime	500	540				
Red Rock	540	600				
Lime	600	640				
Red Rock	640	660				
Lime	660	720				
Slate	720	740				
Coal	740	742				
Slate	742	750				
Lime	750	765				
Slate	765	800				
Cave	800	814				
Lime	814	824				
Big Dunkard	824	849				
Lime	849	859				
Slate	859	907				
Lime	907	1040				
Sand (gas)	1040	1160				
Lime	1160	1170				
1st salt sand	1170	1324				
Slate	1324	1344				
2nd salt sand	1344	1300				
Slate	1300	1365				
Lime	1365	1375				
3rd salt sand	1375	1615				
Slate	1615	1695				
Red Rock	1695	1745				
Slate&Shells	1745	1767				
Red Rock	1767	1845				
Maxon sand	1845	1860				
Slate&Shells	1860	1940				
Pencil Cave	1940	1945				
Big Lime	1945	2055				
Big Injun	2055	2170				
Slate&Shells	2170	2572				
Gordon stray	2572	2594				
Slate	2594	2605				2585&2589
Gordon sand	2605	2627				
Slate	2627	2643				
Sand	2643	2648				
Slate&Shells	2648	2796				
5th sand	2796	2802				
Slate	2802	2829				

2796  
 1945  
 ---  
 851