

Latitude

Longitude

1.70s
159w

Topo Location

7.5' Loc. _____ 15' Loc. 458J
_____ (calc.) 382W

Company _____

Farm _____

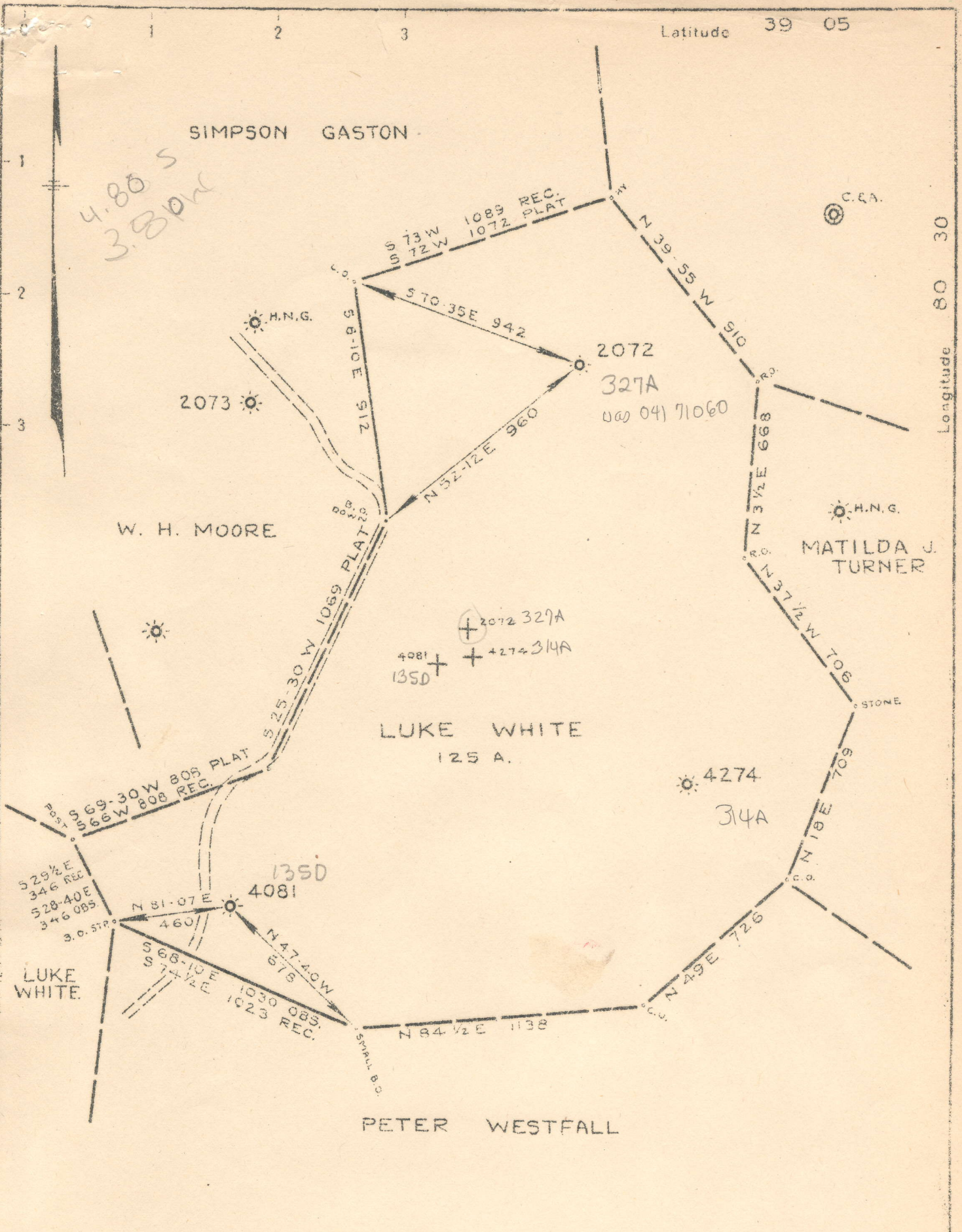
15' Quad Vadiose
(sec.) _____

7.5' Quad Camden _____

District Court House _____

WELL LOCATION PLAT

County 041 Permit 30327
Wad 041 71060



New Location
 Drill Deeper
 Abandonment X - 2072

Company PITTSBURGH & W. VA. GAS
 Address CLARKSBURG, W. VA.
 Farm LUKE WHITE ET UX
 Tract _____ Acres 125 Lease No. 4376
 Well (Farm) No. 2 Serial No. 2072
 Elevation (Spirit Level) 4081 - 1386 VA.
 4081 - 1312 VA.
 Quadrangle VADIS S. E. 3 4
 County LEWIS District COURT HOUSE
 Engineer *J. J. ...*
 Engineer's Registration No. 1084
 File No. V. 139 - P. 42 Drawing No.
 Date JAN. 3, 1946 Scale 1" = 500'

STATE OF WEST VIRGINIA
 DEPARTMENT OF MINES
 OIL AND GAS DIVISION
 CHARLESTON

WELL LOCATION MAP
 FILE NO LEW-327-A, No. 2072

+ Denotes location of well on United States Topographic Maps, scale 1 to 62,500, latitude and longitude lines being represented by border lines as shown.

- Denotes one inch spaces on border line of original tracing.



STATE OF WEST VIRGINIA
DEPARTMENT OF MINES
OIL AND GAS DIVISION

417

WELL RECORD

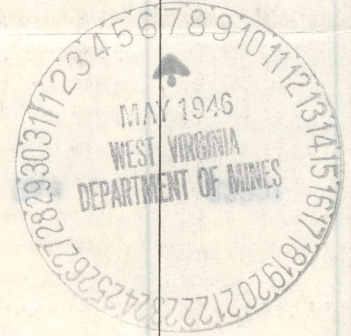
Permit No. Ab 307-A Oil or Gas Well "GAS"
(KIND)

Company Pittsburgh & West Va. Gas Company.
Address Clarksburg, West Va.,
Farm Luke White et ux Acres 125
Location (waters) Vadis S/E. 3-4
Well No. 2072 Elev. 1386' VA
District Court House County Lewis
The surface of tract is owned in fee by John White
Address Weston, W. Va.,
Mineral rights are owned by N. C. White
903 West Pike St., Address Clarksburg, W. Va.
Drilling commenced January 9th, 1911
Drilling completed February 18, 1911
Date Shot From To
With
Open Flow /10ths Water in Inch
/10ths Merc. in Inch
Volume Cu. Ft.
Rock Pressure lbs. hrs.
Oil bbls., 1st 24 hrs.
Fresh water feet feet
Salt water feet feet

Casing and Tubing	Used in Drilling	Left in Well	Packers
Size			Kind of Packer
16			
13			
10	165'	165'	Size of
8 1/4	1035'	1035'	
6 5/8	2016'	2016'	Depth set
5 3/16			
3			Perf. top
2			Perf. bottom
Liners Used			Perf. top
			Perf. bottom

CASING CEMENTED SIZE No. Ft. Date
COAL WAS ENCOUNTERED AT 455 FEET 96 INCHES
890 FEET 60 INCHES FEET INCHES
FEET INCHES FEET INCHES

Formation	Color	Hard or Soft	Top	Bottom	Oil, Gas or Water	Depth Found	Remarks
Clay	Red	Soft	0	10			
Slate	"	"	10	40			
Slate	Dark	"	40	100			
Sand	White	"	100	140			
Slate	"	"	140	165			
Lime	"	Hard	165	175			
Slate	Dark	Soft	175	225			
"	Red	"	225	285			
Lime	White	Hard	285	325			
Slate	Dark	Soft	325	375			
Lime	"	Hard	375	430			
Slate	"	Soft	430	455			
Pgh. Coal	Black	"	455	463			
Slate	Dark	"	463	490			
Lime	"	Hard	490	510			
Slate	"	Soft	510	540			
"	Red	"	540	640			
Lime	White	"	640	670			
Red Rock	Red	"	670	735			
Slate	Dark	"	735	755			
Red Rock	Red	"	755	770			
Slate	Dark	"	770	810			
Lime	"	Hard	810	830			
Slate	Black	Soft	830	890			
Coal			890	895			
Little Dunkard	Dark	Hard	895	950			
Slate	Black	Soft	950	985			
Lime	Dark	Hard	985	1000			
Slate	Black	Soft	1000	1035			
Big Dunkard	White	Hard	1035	1110			
Slate	Light	Soft	1110	1125			
Big Dunkard	White	Hard	1125	1315			
Slate	Black	Soft	1315	1330			
Gas Sand	Dark	Hard	1330	1375			
Slate	Black	Soft	1375	1400			
Lime	White	Hard	1400	1415			
1st. Salt Sand	"	Soft	1415	1435			
Slate	"	"	1435	1470			
2nd. Salt Sand	"	Hard	1470	1655			



Formation	Color	Hard or Soft	Top	Bottom	Oil, Gas or Water	Depth Found	Remarks
Lime	White	Hard	1655	1660			
3rd. Salt Sand	"	"	1660	1690			
Slate	Black	Soft	1690	1700			
Lime	Dark	Hard	1700	1720			
Slate	Black	Soft	1720	1790			
Lime	White	Hard	1790	1825			
Red Rock	Red	Soft	1825	1970			
Maxon Sand	Light	Hard	1970	1995			
Slate	White	Soft	1995	2005			
Big Lime	Light	Hard	2005	2110			
Big Injun Sand	White	"	2110	2230	Gas	2220'	
Slate	Black	Soft	2230	2235			
Lime	Light	Hard	2235	2300			
Slate	White	Soft	2300	2410			
Gantz Sand	Black	Hard	2410	2430			
Slate	Black	Soft	2430	2570			
50 Ft. Shells (Sd)	Light	Hard	2570	2679			
Gordon Stray	Light	"	2679	2703	Gas	2682'	
Slate	Black	Soft	2703	2743	Gas	2690-2699'	
Sand Gordon	Light	Open	2713	2738	Gas	2715'	
Un-recorded			2738	2740			
Total Depth.....				2740			

DEPARTMENT OF MINES

May 2, 1946

Date _____, 194__

PITTSBURGH & WEST VA GAS COMPANY.

APPROVED _____, Owner

By W. C. McMasters
 (Title)

FIRST PRESSURE TEST IN 1 1/2" CASING REMARKS

30 Sec. 85 lbs.
 1 Min. 110 "
 2 " 165 "
 5 " 295 "
 10 " 420 "
 15 " 500 "
 30 " "

Rock Pressure 555 " in 24 hours MAY 31 1915 285 #
 Taken Feb 18 1911 6.6 30. 800 ft
 By McGilroy

WELL TUBED AND PACKED April 4 1914

27' 30" 3" Inting Hook (427 gals)
 3' 15" 1 1/2" 159% checked
 1- 6/8 x 3 Anchor Packers (Pinned)
 1- 6/8 x 3 brmt "

FIRST PRESSURE TEST IN 3" TUBING REMARKS

30 Sec. ~~20~~ lbs.
 1 Min. 35 "
 2 " 55 "
 5 " 120 "
 10 " 155 "
 20 " 165 "
 30 " "

Rock Pressure 200 " in 24 hrs
 Taken 414 lb 1914
 By R. W. Leakey

Repacked 9/11/10

MATERIAL FOR THIS WELL RECEIVED FROM FOLLOWING SOURCES:

115910 " 1 1/2" x 3 1/2" x 3 1/2" (427 gals)
 2 1/2" x 3 1/2" x 3 1/2" (159% checked)
 Set Rig iron's 3/4" diameter, 1 1/2" length

414-14 - used Snow Rig