

Latitude

Longitude

2.66s  
1.58w

Topo Location

7.5' Loc. \_\_\_\_\_ 15' Loc. \_\_\_\_\_  
(calc.) \_\_\_\_\_

Company \_\_\_\_\_

Farm \_\_\_\_\_

15' Quad \_\_\_\_\_  
(sec.)

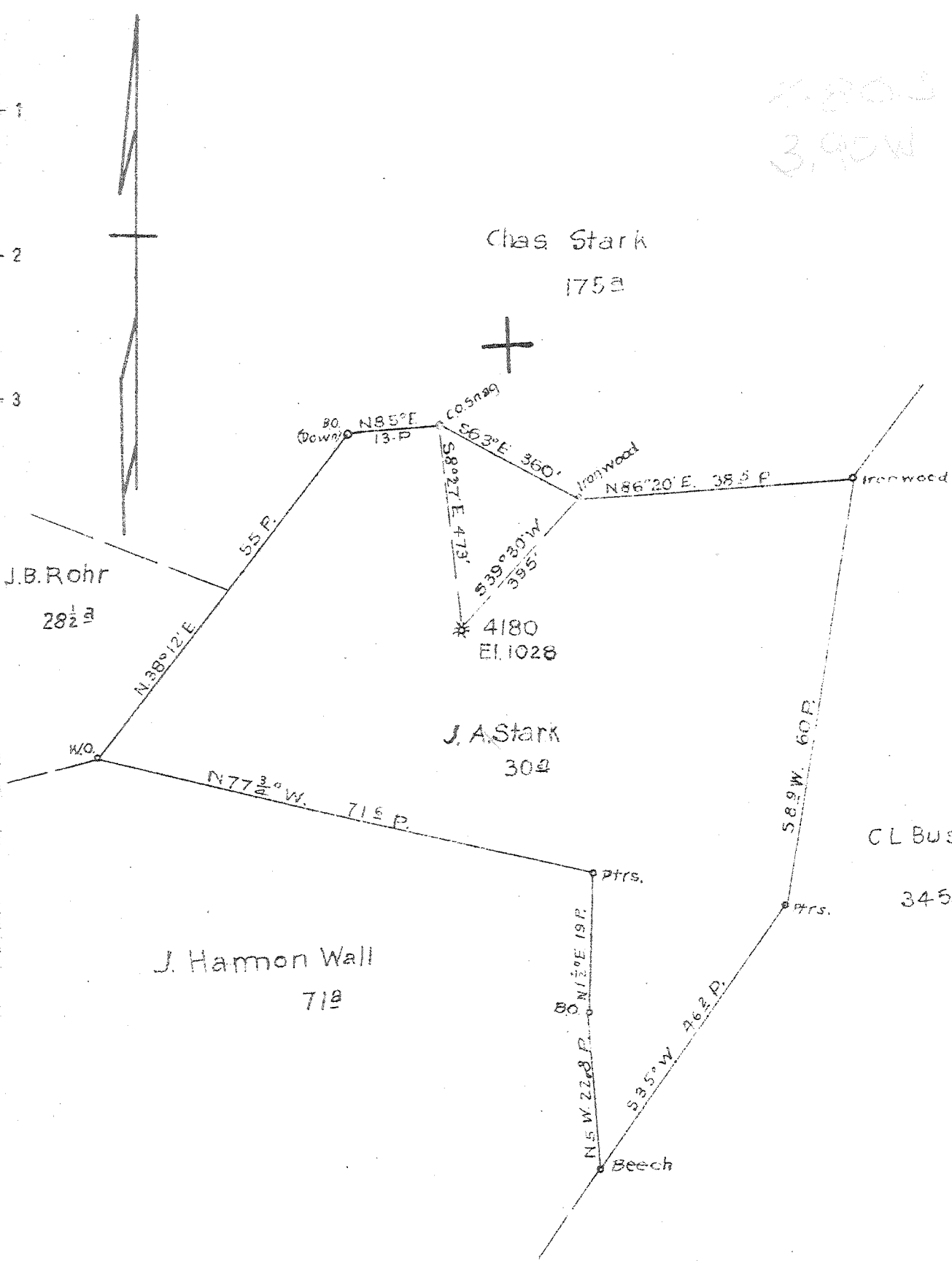
7.5' Quad Vadis

District Freemans Cook

WELL LOCATION PLAT

County 041 Permit 30331

2803  
3,90W



New Location  
 Drill Deeper  
 Abandonment

Map Sh. 72 Sq. (S. 528 W4 EB. 556 P-26-28.

Company	Hope Natural Gas Co.
Address	Clarksburg W.Va.
Farm	J.A. Stark
Tract	Acres 30
Lease No.	28704
Well (Farm) No.	Serial No. 4180
Elevation (Spirit Level)	1028'
Quadrangle	Vadis
County	Lewis
District	Freemans Creek
Engineer	W.M. Powers
Engineer's Registration No.	900
File No.	Drawing No.
Date	6-18-46
Scale	1" = 20 P.

STATE OF WEST VIRGINIA  
 DEPARTMENT OF MINES  
 OIL AND GAS DIVISION  
 CHARLESTON

WELL LOCATION MAP  
 FILE NO. LEW-331-A

+ Denotes location of well on United States Topographic Maps, scale 1 to 62,500, latitude and longitude lines being represented by border lines as shown.

- Denotes one inch spaces on border line of original tracing.



STATE OF WEST VIRGINIA  
DEPARTMENT OF MINES  
OIL AND GAS DIVISION

416

WELL RECORD

Permit No. AP 391 A

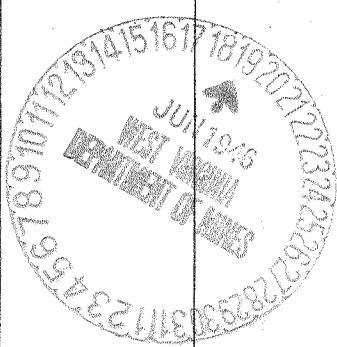
~~Oil~~ or Gas Well \_\_\_\_\_ (KIND)

Company Hope Natural Gas Company.  
 Address 445 West Main St. Clarksburg, W. Va.  
 Farm J.A. Stark Acres 30  
 Location (waters) \_\_\_\_\_  
 Well No. 4180 Elev. 1028  
 District Freemans Creek County Lewis  
 The surface of tract is owned in fee by \_\_\_\_\_  
 Address \_\_\_\_\_  
 Mineral rights are owned by \_\_\_\_\_  
 Address \_\_\_\_\_  
 Drilling commenced \_\_\_\_\_  
 Drilling completed Sept. 4, 1914  
 Date Shot \_\_\_\_\_ From \_\_\_\_\_ To \_\_\_\_\_  
 With \_\_\_\_\_  
 Open Flow \_\_\_\_\_ /10ths Water in \_\_\_\_\_ Inch  
 \_\_\_\_\_ /10ths Merc. in \_\_\_\_\_ Inch  
 Volume \_\_\_\_\_ Cu. Ft.  
 Rock Pressure \_\_\_\_\_ lbs. \_\_\_\_\_ hrs.  
 Oil \_\_\_\_\_ bbls., 1st 24 hrs.  
 Fresh water none recorded feet \_\_\_\_\_ feet  
 Salt water none recorded feet \_\_\_\_\_ feet

Casing and Tubing	Used in Drilling	Left in Well	Packers
Size			
16			Kind of Packer _____
13			
10	?	Pulled	Size of _____
8 1/4	?	Pulled	
6 1/2	1570	1570	Depth set _____
5 3/16			
3			Perf. top _____
2	2298	Pulled	Perf. bottom _____
Liners Used			Perf. top _____
			Perf. bottom _____

CASING CEMENTED NOT SIZE \_\_\_\_\_ No. Ft. \_\_\_\_\_ Date \_\_\_\_\_  
 COAL WAS ENCOUNTERED AT \_\_\_\_\_ FEET \_\_\_\_\_ INCHES  
 \_\_\_\_\_ FEET \_\_\_\_\_ INCHES FEET \_\_\_\_\_ INCHES  
 \_\_\_\_\_ FEET \_\_\_\_\_ INCHES FEET \_\_\_\_\_ INCHES

Formation	Color	Hard or Soft	Top	Bottom	Oil, Gas or Water	Depth Found	Remarks
Dunkard			385	555			
Salt Sands			715	850			
Saxon			1075	1221			
Big Lime			1478	1550			
Big Injun			1550	1643	gas	?	
Squaw			1700	1735			
Berea			1745	1790			
Gordon			2172	2180	gas	?	
Total depth				2298			



Formation	Color	Hard or Soft	Top	Bottom	Oil, Gas or Water	Depth Found	Remarks

Date June 18, 1946, 194

APPROVED Hope Natural Gas Company, Owner

By [Signature]  
 General Superintendent.