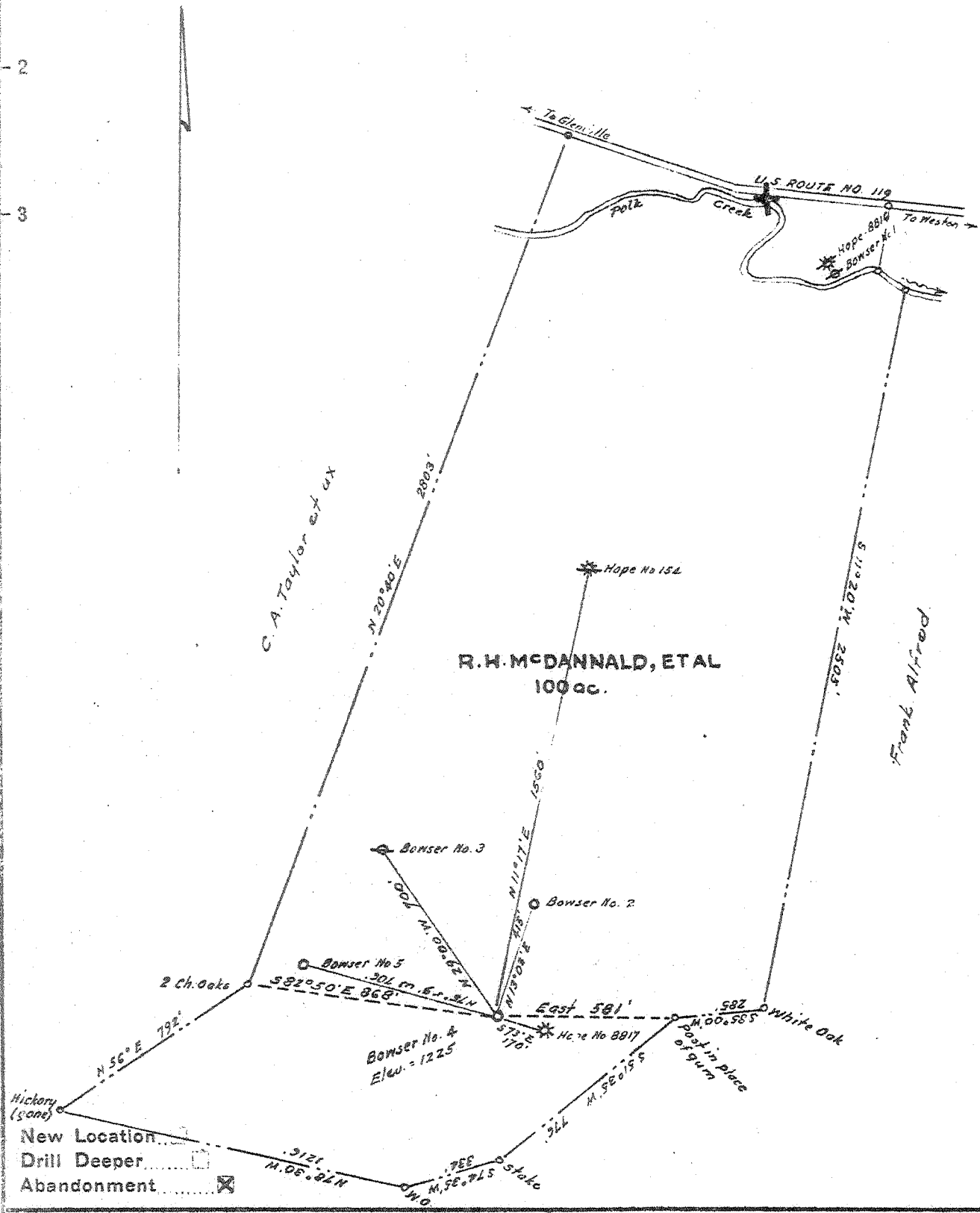




3083  
2.20 W



Company BOWSER & LOUDIN  
 Address Union Trust Bldg., Parkersburg, W. Va.  
 Farm R. H. McDannald, et al.  
 Tract \_\_\_\_\_ Acres 100 Lease No. \_\_\_\_\_  
 Well (Farm) No. 4 Serial No. \_\_\_\_\_  
 Elevation (Spirit Level) 1225'  
 Quadrangle Yadis  
 County Lewis District Freemans Creek  
 Engineer [Signature]  
 Engineer's Registration No. 1227  
 File No. \_\_\_\_\_ Drawing No. \_\_\_\_\_  
 Date May, 1947. Scale 1" = 500'

STATE OF WEST VIRGINIA  
DEPARTMENT OF MINES  
OIL AND GAS DIVISION  
CHARLESTON

**WELL LOCATION MAP**  
FILE NO. LEW-349-A

+ Denotes location of well on United States Topographic Maps, scale 1 to 62,500, latitude and longitude lines being represented by border lines as shown.

- Denotes one inch spaces on border line of original tracing.



435

STATE OF WEST VIRGINIA  
DEPARTMENT OF MINES  
OIL AND GAS DIVISION

WELL RECORD

Permit No. 749-A

Oil or Gas Well Oil  
(KIND)

Company Bowser & Loudin  
Address Union Trust Bldg., Parkersburg  
Farm R.H. McDannald Acres 100  
Location (waters) Park Creek  
Well No. 4 Elev. 1306  
District Freemans Creek County Lewis  
The surface of tract is owned in fee by George Gains  
Address Price Town  
Mineral rights are owned by R.H. McDannald et al  
Address Weston, W. Va.  
Drilling commenced Nov. 1919  
Drilling completed Dec 1919  
Date Shot Unknown From To

Casing and Tubing	Used in Drilling	Left in Well	Packers
Size			
16			Kind of Packer
13			
10			Size of
8 1/2	167	167	
6 1/2	1148	1148	Depth set
5 3/16			
3			Perf. top
2		1465	Perf. bottom
Liners Used			Perf. top
			Perf. bottom

Open Flow /10ths Water in \_\_\_\_\_ Inch  
/10ths Merc. in \_\_\_\_\_ Inch  
Volume \_\_\_\_\_ Cu. Ft.  
Rock Pressure \_\_\_\_\_ lbs. \_\_\_\_\_ hrs.  
Oil Unknown \_\_\_\_\_ bbls., 1st 24 hrs.  
Fresh water \_\_\_\_\_ feet \_\_\_\_\_ feet  
Salt water 1060 feet \_\_\_\_\_ feet

CASING CEMENTED None SIZE \_\_\_\_\_ No. Ft. \_\_\_\_\_ Date \_\_\_\_\_  
COAL WAS ENCOUNTERED AT None FEET \_\_\_\_\_ INCHES  
\_\_\_\_\_ FEET \_\_\_\_\_ INCHES \_\_\_\_\_ FEET \_\_\_\_\_ INCHES  
\_\_\_\_\_ FEET \_\_\_\_\_ INCHES \_\_\_\_\_ FEET \_\_\_\_\_ INCHES

Formation	Color	Hard or Soft	Top	Bottom	Oil, Gas or Water	Depth Found	Remarks
Little Dunkard			420	440			
Big "			485	535			
GAS SAND			800	848			
1st SALT SAND			950	1085	WATER	1060	
SAND			1100	1292			
"			1370	1437			
SALT SAND			1437	1464	OIL OIL	1455 1460	Black Amber

