

Latitude

Longitude

2.78s
1.22w

Topo Location

7.5' Loc. _____ 15' Loc. _____
 _____ (calc.) _____

Company _____

Farm _____

15' Quad _____
(sec.)

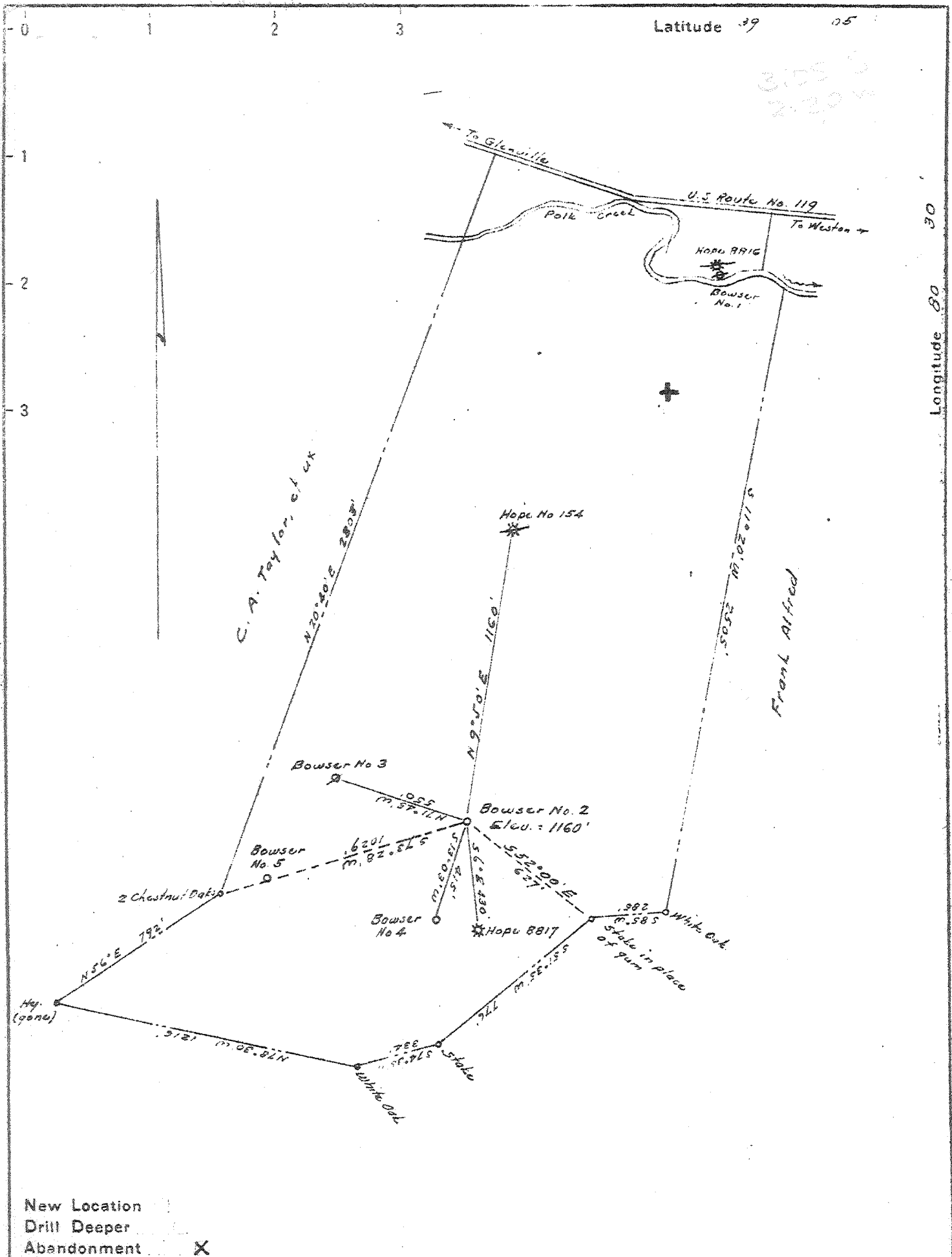
7.5' Quad Camden

District freemans Creek

WELL LOCATION PLAT

County 041 Permit 30351

3753
220



New Location
 Drill Deeper
 Abandonment

Company BOWSER & LOUDIN
 Address Union Trust Bldg., Parkersburg, W. Va.
 Farm R. H. McDannald, et al.
 Tract _____ Acres 100 Lease No. _____
 Well (Farm) No. 2 Serial No. _____
 Elevation (Spirit Level) 1160'
 Quadrangle Vadis
 County Lewis District Freemans Creek
 Engineer W. H. H. Jones
 Engineer's Registration No. 1277
 File No. _____ Drawing No. _____
 Date May 1947 Scale 1" = 500'

STATE OF WEST VIRGINIA
 DEPARTMENT OF MINES
 OIL AND GAS DIVISION
 CHARLESTON

WELL LOCATION MAP
 FILE NO. LEW-351-A

+ Denotes location of well on United States Topographic Maps, scale 1 to 62,500, latitude and longitude lines being represented by border lines as shown.

- Denotes one inch spaces on border line of original tracing.



STATE OF WEST VIRGINIA
DEPARTMENT OF MINES
OIL AND GAS DIVISION

450

Ab 351-A
Permit No. 351-A

WELL RECORD

Oil or Gas Well Oil
(KIND)

Company Bowser & Loudin
Address Union Trust Bldg., Parkersburg
Farm R.H. McDannald Acres 100
Location (waters) Polk Creek
Well No. 2 Elev. 1190
District Freemans Creek County Lewis
The surface of tract is owned in fee by George Gains
Address Pike town, W. Va.
Mineral rights are owned by R.H. McDannald et al.
Address Weston, W. Va.
Drilling commenced Unknown
Drilling completed Aug. 1918
Date Shot Unknown From To
With

Casing and Tubing	Used in Drilling	Left in Well	Packers
Size			Kind of Packer
16			
13			
10			Size of
8 1/4	175	175	
6 5/8	1030	1030	Depth set
5 3/16			
3			Perf. top
2		1334	Perf. bottom
Liners Used			Perf. top
			Perf. bottom

Open Flow /10ths Water in _____ Inch
/10ths Merc. in _____ Inch
Volume _____ Cu. Ft.
Rock Pressure _____ lbs. _____ hrs.
Oil 24 bbls., 1st 24 hrs.
Fresh water _____ feet
Salt water _____ feet

CASING CEMENTED _____ SIZE _____ No. Ft. _____ Date _____
COAL WAS ENCOUNTERED AT _____ FEET _____ INCHES
_____ FEET _____ INCHES
_____ FEET _____ INCHES

Formation	Color	Hard or Soft	Top	Bottom	Oil, Gas or Water	Depth Found	Remarks
Sand			615	675	Water	943	
"			700	1205			
Slate			1304	1319	Water	1240	
Sand			1319	1323			
"			1323	1329	Oil	1323	Total Depth 1334'

