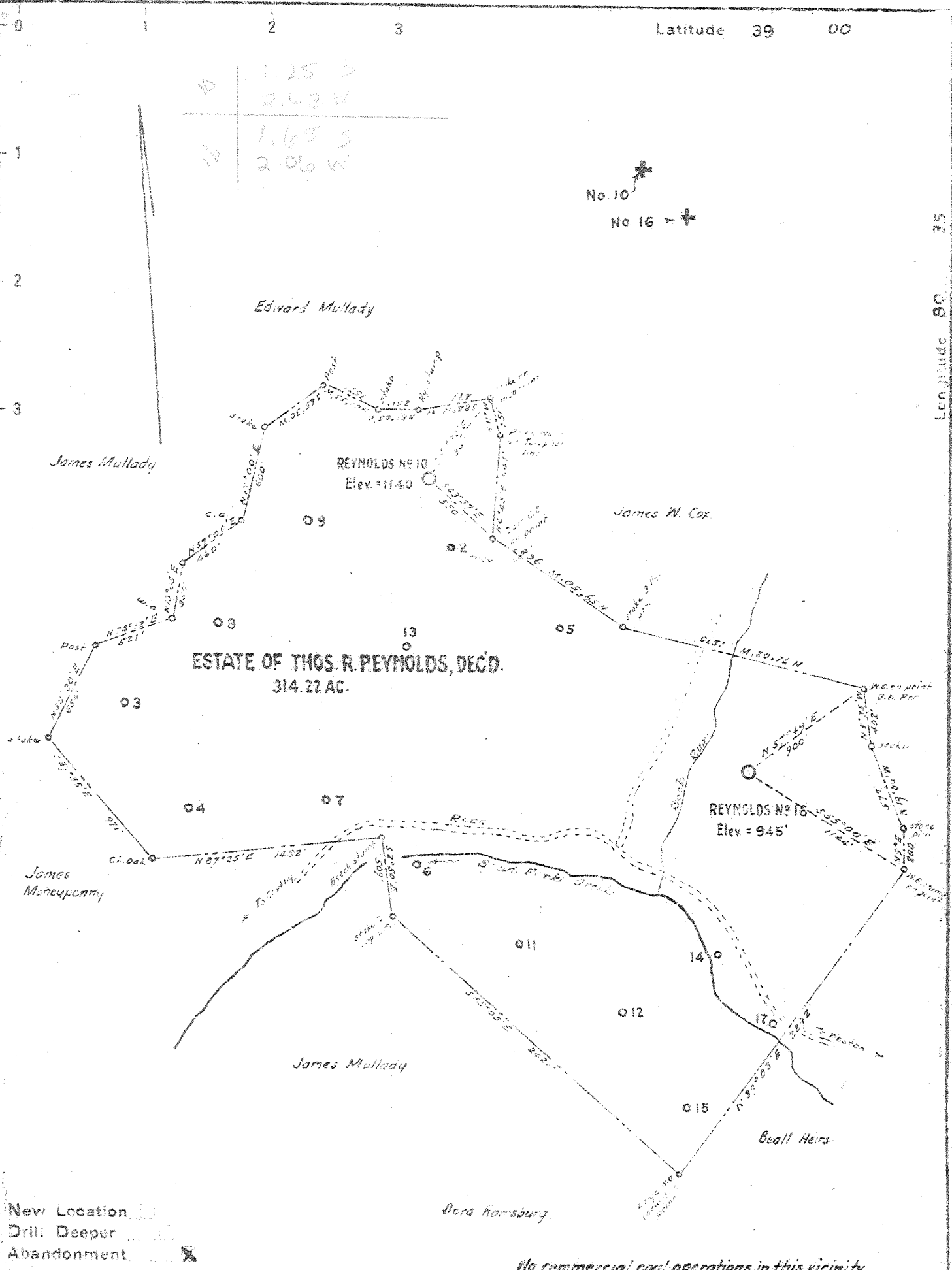


1.25 S  
2.43 W  
1.65 S  
2.06 W

No. 10 +  
No. 16 +



No commercial coal operations in this vicinity

Company J. O. BOYLE  
 Address Youngwood, Penna.  
 Farm Estate of Thos. R. Reynolds, dec'd.  
 Tract \_\_\_\_\_ Acre, 314.22 Lease No. \_\_\_\_\_  
 Well (Farm) No. 10 & 16 Serial No. \_\_\_\_\_  
 Elevation (Spirit Level) No. 10 - 1140' & No. 16 - 945'  
 Quadrangle Burnsville  
 County Lewis District Court House  
 Engineer M. S. Holt, Jr.  
 Engineer's Registration No. 1227  
 File No. \_\_\_\_\_ Drawing No. \_\_\_\_\_  
 Date April, 1948 Scale 1" = 500'

STATE OF WEST VIRGINIA  
 DEPARTMENT OF MINES  
 OIL AND GAS DIVISION  
 CHARLESTON

**WELL LOCATION MAP**  
 FILE NO. LEW-414-A-#10  
LEW-415-A-#16

+ Denotes location of well on United States Topographic Maps, scale 1 to 62,500, latitude and longitude lines being represented by border lines as shown.  
 - Denotes one inch spaces on border line of original tracing.



Y93

STATE OF WEST VIRGINIA  
DEPARTMENT OF MINES  
OIL AND GAS DIVISION

WELL RECORD

Permit No. 415-A

Oil or Gas Well \_\_\_\_\_  
(KIND)

Company J.O. Boyle  
 Address Jas L. Knight, Boston, WnVa.  
 Farm T.R. Reynolds Acres 317.27  
 Location (waters) \_\_\_\_\_  
 Well No. 16 Elev. 945  
 District Court House County Lewis  
 The surface of tract is owned in fee by \_\_\_\_\_  
 Address \_\_\_\_\_  
 Mineral rights are owned by \_\_\_\_\_  
 Address \_\_\_\_\_  
 Drilling commenced \_\_\_\_\_  
 Drilling completed Jan. 1, 1902  
 Date Shot \_\_\_\_\_ From \_\_\_\_\_ To \_\_\_\_\_  
 With \_\_\_\_\_  
 Open Flow \_\_\_\_\_ /10ths Water in \_\_\_\_\_ Inch  
 \_\_\_\_\_ /10ths Merc. in \_\_\_\_\_ Inch  
 Volume \_\_\_\_\_ Cu. Ft.  
 Rock Pressure \_\_\_\_\_ lbs. \_\_\_\_\_ hrs.  
 Oil \_\_\_\_\_ bbls., 1st 24 hrs.  
 Fresh water \_\_\_\_\_ feet \_\_\_\_\_ feet  
 Salt water \_\_\_\_\_ feet \_\_\_\_\_ feet

Casing and Tubing	Used in Drilling	Left in Well	Packers
Size			Kind of Packer
16			
13			
10	303		Size of
8 1/4	895		
6 5/8	1978		Depth set
5 3/16			
3			Perf. top
2			Perf. bottom
Liners Used			Perf. top
			Perf. bottom

CASING CEMENTED \_\_\_\_\_ SIZE \_\_\_\_\_ No. Ft. \_\_\_\_\_ Date \_\_\_\_\_  
 COAL WAS ENCOUNTERED AT 235 FEET 48 INCHES  
 \_\_\_\_\_ FEET \_\_\_\_\_ INCHES \_\_\_\_\_ FEET \_\_\_\_\_ INCHES  
 \_\_\_\_\_ FEET \_\_\_\_\_ INCHES \_\_\_\_\_ FEET \_\_\_\_\_ INCHES

Formation	Color	Hard or Soft	Top	Bottom	Oil, Gas or Water	Depth Found	Remarks
Pgh. Coal			235	239			
Big Linc			1915	1955			
Big Injun			1955	2245			
Stray			2555	2567			
Gordon			2583	2604	Oil	2598	
Fifth			2771	2781	"	2772	
Total Depth				2803			

