

Latitude

Longitude

2.115
1.04w

Topo Location

7.5' Loc. _____ 15' Loc. _____
 _____ (calc.) _____

Company _____

Farm _____

15' Quad _____
(sec.)

7.5' Quad Vadis

District Freemans Creek

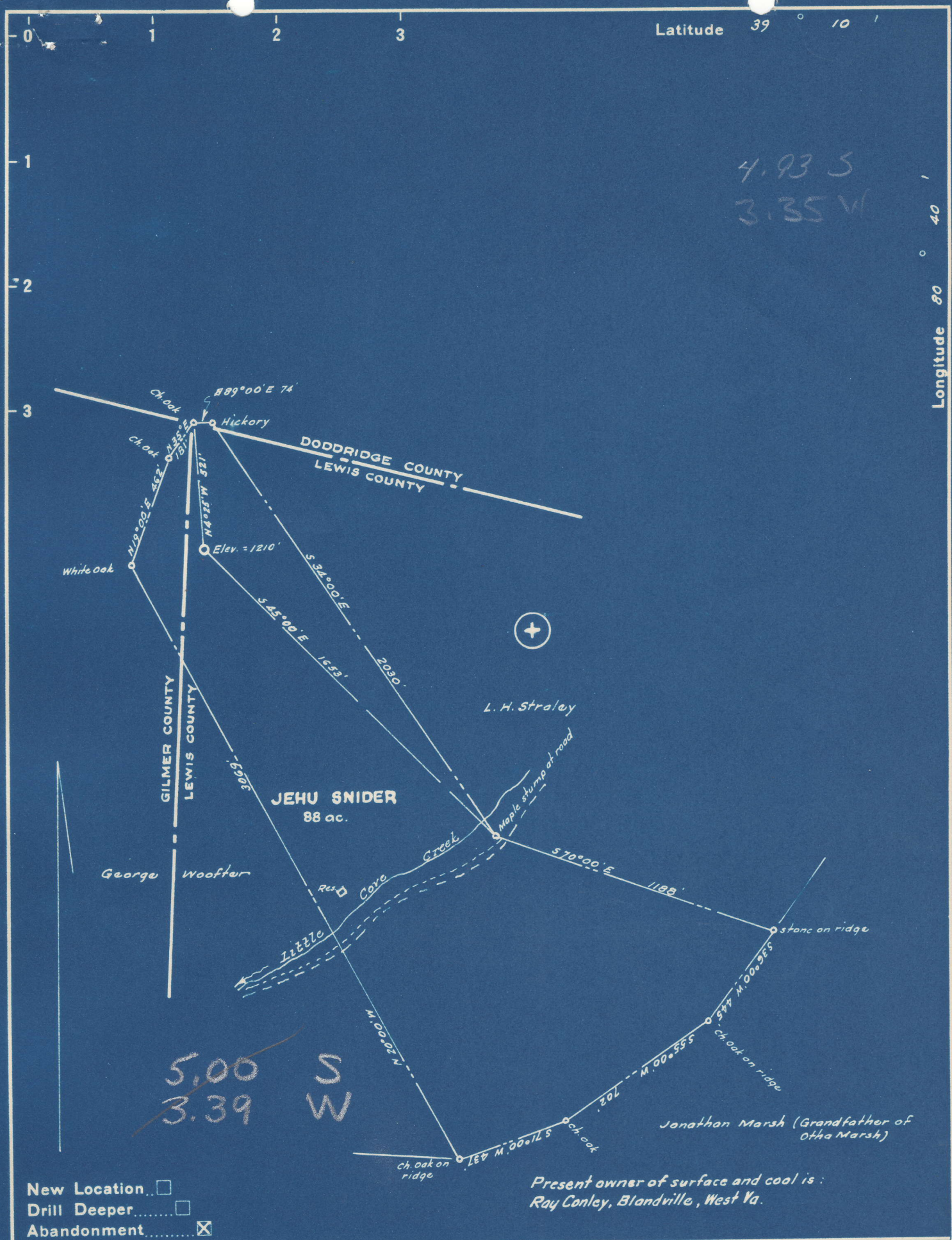
WELL LOCATION PLAT

County 041 Permit 30460

Latitude 39 10

4.93 S
3.35 W

Longitude 80 40



New Location
 Drill Deeper
 Abandonment

Present owner of surface and cool is:
 Ray Conley, Blandville, West Va.

Company MCCALL DRILLING CO.
 Address 612 Keystone Bldg., Pittsburgh, Pa.
 Farm Jehu Snider
 Tract _____ Acres 88 Lease No. _____
 Well (Farm) No. 1-156 Serial No. _____
 Elevation (Spirit Level) 1210
 Quadrangle Yadis
 County Lewis District Freemans Creek
 Engineer W. S. S. J.
 Engineer's Registration No. 1227
 File No. _____ Drawing No. _____
 Date January, 1949 Scale 1" = 500'

STATE OF WEST VIRGINIA
 DEPARTMENT OF MINES
 OIL AND GAS DIVISION
 CHARLESTON

WELL LOCATION MAP
 FILE NO. LEW-460-A

+ Denotes location of well on United States Topographic Maps, scale 1 to 62,500, latitude and longitude lines being represented by border lines as shown.

- Denotes one inch spaces on border line of original tracing.

John SNIDER

JOHN SNIDER NO. 1 (156) WELL.

460A

Froemans Creek District, Loud County, W. Va.
By McCall Drilling Co., 612 Keystone Bldg., Pittsburgh, Pa.
Abandoned under permit No.-47
on 66 acres.

Elevation, 1210' L.

Surface owned by John Snider, Vadsis, W. Va., and minerals by Roy Conley,
Blainville, W. Va.

Drilling commenced Jan. 15, 1930; completed Feb. 14, 1930.

Open flow, 35/10ths Merc. in 3".

10" casing, 180'; 8" casing, 1124'; 6" casing, 2135'; 2" tubing, 2215'; all left in.
Oil well. Record to Dept. of Mines stamped Feb. 10, 1949.

Record to RCF from Mrs. Griffith July 10, 1949. Old File No. 559.

	Top.	Bottom.
Sand (water, 1/0')	130	165
Sand	695	750
Sand	1030	1074
Sand	1185	1195
Sand	1234	1244
Sand	1516	1531
Sand	1681	1741
Horton Sand	1905	1970
Little Line	2032	2054
Pencil Cave	2054	2063
Blue Monday Sand	2063	2094
Big Line	2100	2160
Big Injun Sand (gas, 2164-2187', 35/10 Merc. in 2")	2160	2215
Total depth		2253



559

STATE OF WEST VIRGINIA
DEPARTMENT OF MINES
OIL AND GAS DIVISION

WELL RECORD

Permit No. Ab 460-A

Oil or Gas Well Oil
(KIND)

Company McCall Drilling Company
 Address #612 Keystone Bldg., Pgh. Pa.
 Farm Jehu Snider Acres 88
 Location (waters) _____
 Well No. 1-156 Elev. 1210
 District Freemans Creek County Lewis
 The surface of tract is owned in fee by Jehu Snider
Vadis, W. Va. Address _____
 Mineral rights are owned by Ray Conley
Blandville Address W. Va.
 Drilling commenced January 15th, 1930
 Drilling completed February 14th, 1930
 Date Shot From _____ To _____
 With _____
 Open Flow _____ /10ths Water in _____ Inch
 _____ 35/10ths Merc. in 3" Inch
 Volume _____ Cu. Ft.
 Rock Pressure _____ lbs. _____ hrs.
 Oil _____ bbls., 1st 24 hrs.
 Fresh water _____ feet _____ feet
 Salt water _____ feet _____ feet

Casing and Tubing	Used in Drilling	Left in Well	Packers
Size			Kind of Packer
16			
13			
10	180	180	Size of
8 1/4	1124	1124	
6 5/8	2135	2135	Depth set
5 3/16			
3			Perf. top
2		2215	Perf. bottom
Liners Used			Perf. top
			Perf. bottom

CASING CEMENTED _____ SIZE _____ No. Ft. _____ Date _____
 COAL WAS ENCOUNTERED AT _____ FEET _____ INCHES
 _____ FEET _____ INCHES FEET _____ INCHES
 _____ FEET _____ INCHES FEET _____ INCHES

Formation	Color	Hard or Soft	Top	Bottom	Oil, Gas or Water	Depth Found	Remarks
Sand			130	165			
Water			160				
Sand			695	750			
Sand			1050	1074			
Sand			1185	1195			
Sand			1224	1244			
Sand			1516	1531			
Sand			1681	1741			
Maxon Sand			1905	1970			
Little Lime			2032	2054			
Pencil Cave			2054	2063			
Blue Monday			2063	2094			
Big Lime			2100	2160	Gas 2164 to 2187		
Big Injun			2160	2215	35/10 M. in 2"		
Total Depth			2253		920 Mcf		

