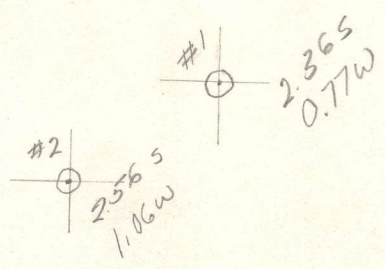


LATITUDE - 38° 55' 00"

80° 25' 00" LONGITUDE



7'5 OGIS topo location

7.5' loc \_\_\_\_\_ 15' loc \_\_\_\_\_  
 (calc.) \_\_\_\_\_

Company \_\_\_\_\_

Farm \_\_\_\_\_

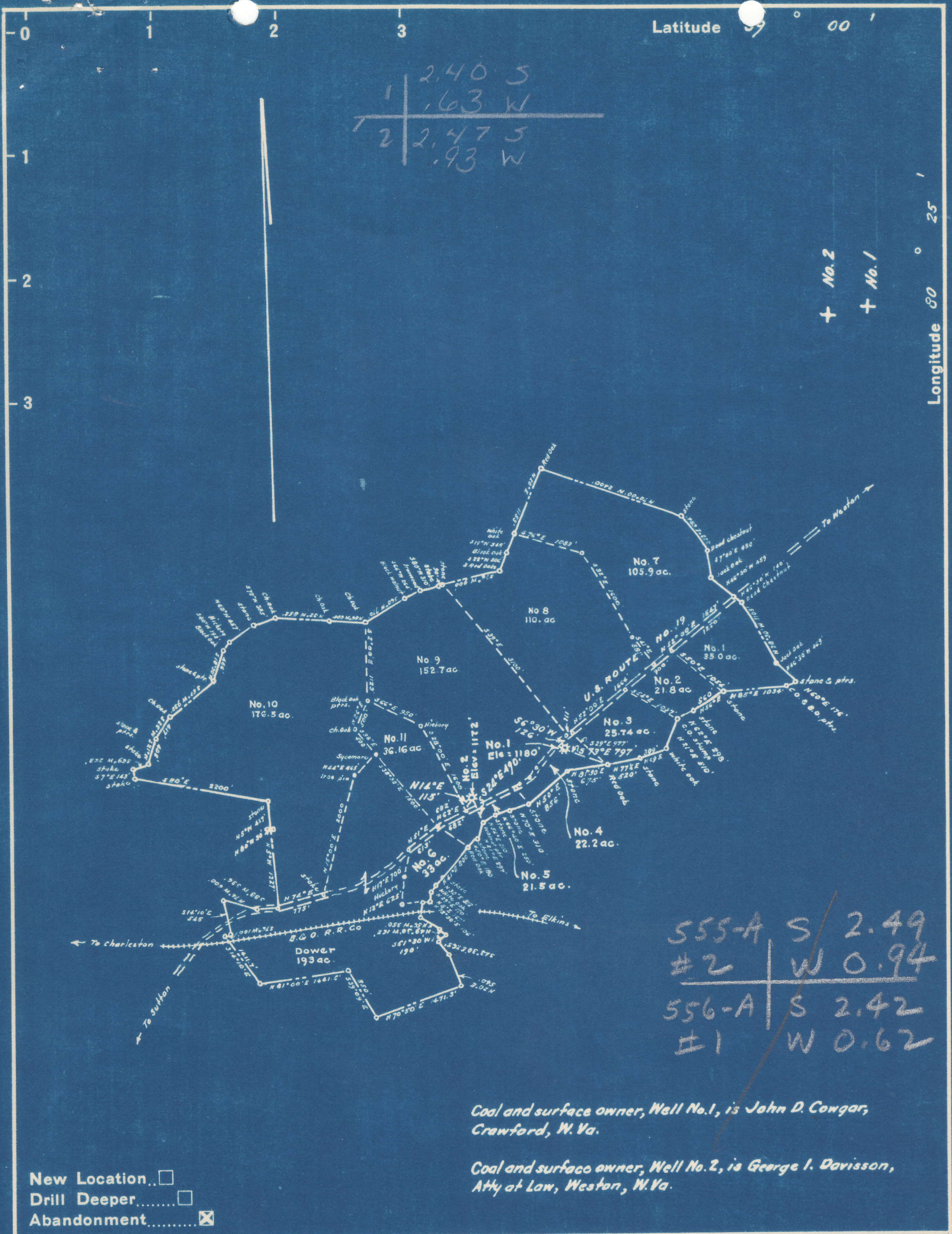
Quad ROANOKE 7 1/2'

County LEWIS

District COLLINS SETTLEMENT

WELL LOCATION MAP

File No. 041-556A (1)



Company MUD LICK OIL & GAS CO.

Address 612 Keystone Bldg., Pittsburgh, Pa.

Farm E. G. Davison

Tract \_\_\_\_\_ Acres 947.07 Lease No. \_\_\_\_\_

Well (Farm) No. One & Two Serial No. \_\_\_\_\_

Elevation (Spirit Level) No. 1-1180' No. 2-1172'

Quadrangle Crawford

County Lewis District Collins Settlement

Engineer U. S. [Signature]

Engineer's Registration No. 1227

File No. \_\_\_\_\_ Drawing No. \_\_\_\_\_

Date October, 1949 Scale 1" = 2000'

STATE OF WEST VIRGINIA  
 DEPARTMENT OF MINES  
 OIL AND GAS DIVISION  
 CHARLESTON

**WELL LOCATION MAP**  
 LEW-555-A-2-68  
 FILE NO. LEW-556-A-1-66

+ Denotes location of well on United States Topographic Maps, scale 1 to 62,500, latitude and longitude lines being represented by border lines as shown.

- Denotes one inch spaces on border line of original tracing.



STATE OF WEST VIRGINIA  
DEPARTMENT OF MINES  
OIL AND GAS DIVISION

640

WELL RECORD

Permit No. Ab LeW-555-02 Oil or Gas Well X (KIND)

Company McCall Drilling Company, Inc  
Address #612 Keystone Bldg., Pgh. Pa.  
Farm E. G. Davisson Acres 1190  
Location (waters) \_\_\_\_\_  
Well No. 2-68 Elev. 1172  
District Collins Settlement County Lewis  
The surface of tract is owned in fee by Davisson Farms Inc. Address Weston, W. Va.  
Mineral rights are owned by Same Address \_\_\_\_\_

Drilling commenced August 30th, 1926  
Drilling completed October 26th, 1926

Date Shot \_\_\_\_\_ From \_\_\_\_\_ To \_\_\_\_\_  
With \_\_\_\_\_

Open Flow 30 /10ths Water in in 3" 520 Mcf Inch  
/10ths Merc. in \_\_\_\_\_ Inch

Volume \_\_\_\_\_ Cu. Ft.

Rock Pressure 650 lbs. \_\_\_\_\_ hrs.

Oil \_\_\_\_\_ bbls., 1st 24 hrs.

Fresh water \_\_\_\_\_ feet \_\_\_\_\_ feet

Salt water \_\_\_\_\_ feet \_\_\_\_\_ feet

Casing and Tubing	Used in Drilling	Left in Well	Packers
Size			Kind of Packer
16			
13			
10	142	142	Size of
8 1/4	584	584	
6 5/8	1428	1428	Depth set
5 3/16			
3			Perf. top
2	1802	1802	Perf. bottom
Liners Used			Perf. top
			Perf. bottom

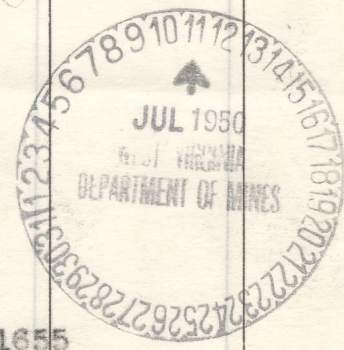
CASING CEMENTED \_\_\_\_\_ SIZE \_\_\_\_\_ No. Ft. \_\_\_\_\_ Date \_\_\_\_\_

COAL WAS ENCOUNTERED AT \_\_\_\_\_ FEET \_\_\_\_\_ INCHES

\_\_\_\_\_ FEET \_\_\_\_\_ INCHES \_\_\_\_\_ FEET \_\_\_\_\_ INCHES

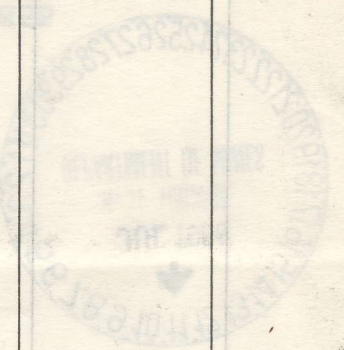
\_\_\_\_\_ FEET \_\_\_\_\_ INCHES \_\_\_\_\_ FEET \_\_\_\_\_ INCHES

Formation	Color	Hard or Soft	Top	Bottom	Oil, Gas or Water	Depth Found	Remarks
Slate			14	60			
Sand			60	80			
Slate			80	100			
Sand			100	142			
Slate			142	143			
Sand			143	200	Hole full water @ 155'		
Slate			200	260			
Sand			260	380			
Slate			380	400			
Sand			400	480	Water @ 475'		
Slate			480	495			
Slate			495	515			
Sand			515	582			
Slate			582	650			
Sand			650	705			
Slate			705	755			
Sand			755	795			
Slate			795	820			
Sand			820	935			
Slate			935	950			
Sand			950	1000			
Slate			1000	1050			
Red Rock			1220	1225			
Sand			1225	1250			
Slate			1250	1295			
Mason Sand			1295	1320			
Slate			1320	1335			
L. Lime			1335	1370			
P? Cave			1370	1385			
Blue Monday			1385	1400			
Big Lime			1400	1470			
B. Injun			1470	1600			
Slate			1600	1615			
Sand			1615	1710	Gas @ 1655		
Slate			1710	1721			
Lime			1721	1728			
Gantz Sand			1728	1757			



FEB 23 1951

Formation	Color	Hard or Soft	Top	Bottom	Oil, Gas or Water	Depth Found	Remarks
Slate			1757	1840			
Sand			1840	1870			
Slate			1870	1880			
Sand			1880	1925			
Slate			1925	1947			
Sand			1947	1960			
Slate			1960	1965			
Sand			1965	2035			
Slate			2035	2122			
4th Sand			2122	2150			
Slate			2150	2235			



DEPARTMENT OF MINES  
STATE OF WEST VIRGINIA

6-30-50

Date \_\_\_\_\_, 19\_\_\_\_

McCall Drilling Company

APPROVED \_\_\_\_\_

Owner

By Geo. C. Shaffer - Secretary  
(Title)

