

LATITUDE 39° 07' 30"



LONGITUDE 80° 32' 30"

7'5 OGIS topo location

7.5' loc 0.553 15' loc _____
0.09w (calc.) _____

Company _____

Farm _____

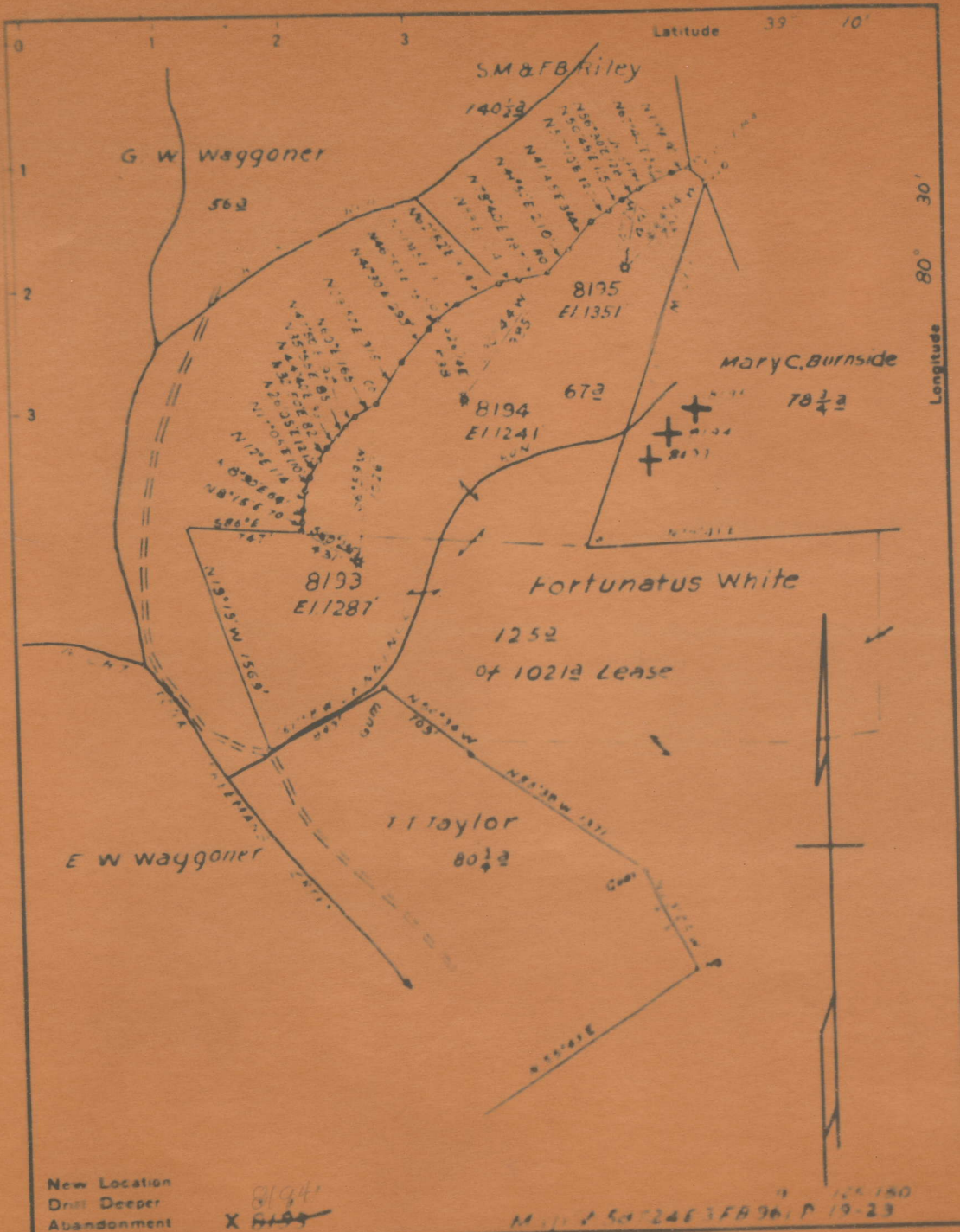
Quad CAMDEN 7 1/2'

County LEWIS

District FREEMANS CREEK

WELL LOCATION MAP

File No. 041-578A



Low
576A
#8194

New Location
Drill Deeper
Abandonment

Company Hope Natural Gas Co
Address Clarksburg, WVa

MAY 24 1923

STATE OF WEST VIRGINIA
DEPARTMENT OF MINES
OIL AND GAS DIVISION



667

STATE OF WEST VIRGINIA
DEPARTMENT OF MINES
OIL AND GAS DIVISION

WELL RECORD

Permit No. LEW-578-A

Gas Gas Well (KIND)

Company Hope Natural Gas Company.
Address 445 West Main St. Clarksburg, W. Va.
Farm Fortunatus White Acres 1021
Location (waters)
Well No. 8194 Elev. 1241
District Freemans Creek County Lewis
The surface of tract is owned in fee by
Address
Mineral rights are owned by
Address
Drilling commenced February 15, 1916
Drilling completed June 18, 1916
Date Shot From To
With
Open Flow /10ths Water in Inch
/10ths Merc. in Inch
Volume Cu. Ft.
Rock Pressure lbs. hrs.
Oil bbls., 1st 24 hrs.
Fresh water 250 feet feet
Salt water 1065 feet feet

Casing and Tubing	Used in Drilling	Left in Well	Packers
Size			Kind of Packer
16			
13			
10	179	Pulled	Size of
8 1/4	923	Pulled	
6 5/8	1749	1749	Depth set
5 3/16	2249	2249	
3			Perf. top
2	2602	2602	Perf. bottom
Liners Used			Perf. top
			Perf. bottom

CASING CEMENTED NOT SIZE No. Ft. Date
COAL WAS ENCOUNTERED AT 240 FEET 48 INCHES
FEET INCHES FEET INCHES
FEET INCHES FEET INCHES

Formation	Color	Hard or Soft	Top	Bottom	Oil, Gas or Water	Depth Found	Remarks
Pittsburgh Coal			240	244			
Little Dunkard			685	708	water	250	
Big Dunkard			735	772			
First Salt			950	1020			
Second Salt			1036	1117	water	1065	
Maxon			1520	1556			
Big Lime			1682	1751	gas	1720 1744	
Big Injun			1751	1890			
Gantz			1965	1987			
Fifty foot			2045	2061			
Gordon			2280	2415	gas	2322 2339	
Fifth			2570	2579	gas	2572	
Total depth				2602			

