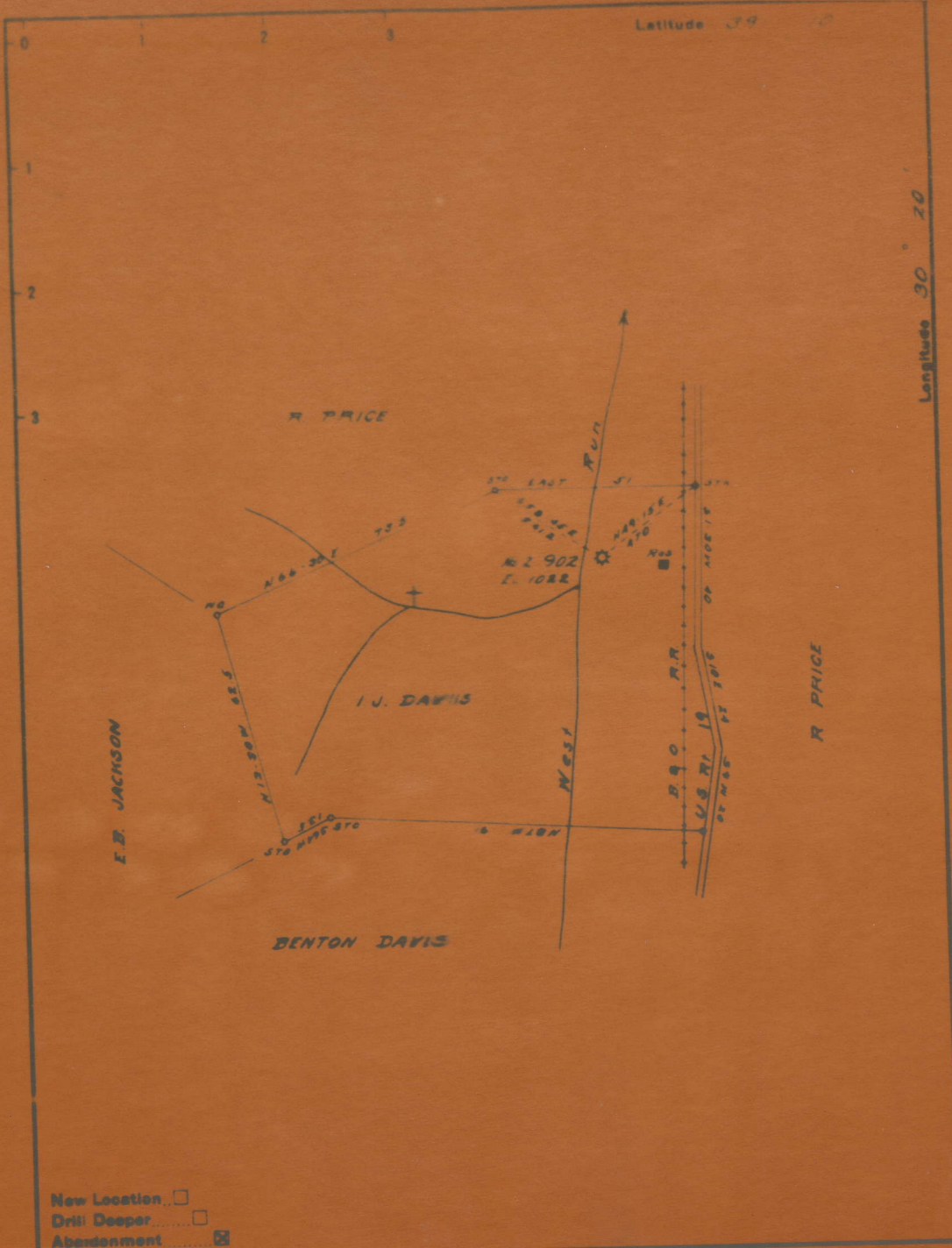




Latitude 39 20

Longitude 80 20



New Location   
 Drill Deeper   
 Abandonment

Company CARNEGIE NATURAL GAS  
 Address PITTSBURGH, Pa.  
 Farm I. U. DAVIS

STATE OF WEST VIRGINIA  
 DEPARTMENT OF MINES  
 OIL AND GAS DIVISION  
 CHARLESTON







*Carnegie* GAS COMPANY  
WELL RECORD

Well No. **902** Map **600A**

**I. J. Davis** Farm Acres

**H. Creek** { Township District **Lewis** County **W. Va.**

Drilling Commenced \_\_\_\_\_ Drilling Completed \_\_\_\_\_

Formation	Top	Bottom	Remarks
Waynesburg Coal			
Mapletown Coal			
Pittsburgh Coal			
Murphy Sand			
L. Dunkard Sand			
B. " "			
U. Freeport Coal			
L. " "			
Kittanning Coal			
"			
Vamport Lime			
Coal			
1st Gas Sand			
1st Salt Sand			
2nd " "			
3rd " "			
Maxton			
Pencil Cave			
Big Lime	1154	1209	
Big Injun Sand		1343	
Squaw			
2nd Gas			
Murrysville Sand			
Gantz } 100 Sand			
50' }			
30' Sand	1688	1708	Gas 1688-1706
Snee Sand			
Gordon Stray and	1765	1841	Gas 1770
Gordon Sand			
4th " "			
4th A " "			
5th " "			
5th A " "	2030	2043	Gas 2031-2042
Bayard " "	4000	4016	Gas 4006-4012
Bayard Stray Sand			
" " Stray			
Elizabeth Sand			
Warren " "			
Speechley Stray Sand			
Speechley Sand			
Tiona Sand			
1st Balltown Sand			
2nd " "			
Sheffield " "			
1st Bradford " "			
2nd " "			
3rd " "			
Kane Sand			

Well Completed at depth of **4027** feet in

Open flow { Mercury in. opening  
              { Water

Remarks:



I. J. DAVIS NO. 2 (902).WELL.

600A

Hackers Creek District, Lewis County, W. Va.  
 By Carnegie Natural Gas Co., 1015 Frick Bldg., Pittsburgh, Pa.  
 Abandoned under permit Lew-.....-A?

On 55 acres, on West Run.

Elevation, 1022' L.

Surface owned by I. J. Davis, Jane Lew, W. Va., and minerals by  
 H. B. Davis, 304 Magnolia Ave., Mannington, W. Va.

Drilling commenced Mar. 24, 1919; completed (to 2071') Apr. 18, 1919.

Drilling deeper commenced Dec. 5, 1927; completed (to 4027') Jan. 4, 1928.

Shot Jan. 5, 1928, at 4001-4013', with 40 qts.

Open flow, 11/10ths Merc. in 2". *516 Mcf*

10" casing, 140' (pulled); 8½", 620'; 6⅝", 1237'; 3" tubing, 4027'.

Gas well. Record to Dept. of Mines dated Jan. 21, 1952.

Record to RCT from Mrs. Griffith May 21, 1952. O.F.No.682.

	Top.	Bottom.
Big Dunkard Sand	100	200
Gas Sand	325	380
First Salt Sand	450	610
Second Salt Sand	640	720
Maxton Sand (gas, 1096')	1077	1115
Pencil Cave	1115	1154
Big Lime	1154	1209
Big Injun Sand	1209	1343
Gantz Sand	1525	1570
Fifty-foot Sand	1620	1660
Thirty-foot Sand (gas, 1688-1706')	1688	1708
Gordon Stray Sand (gas, 1770')	1765	1841
Gordon and Fourth Sands	1855	1925
Fifth Sand (gas, 2031-2042')	2030	2043
Total depth (4-18-19)		2071
DEEPEMED:		
Slate and shells	2655	2665
Benson Sand (gas, 4006-4012')	4000	4016
Total depth (1-4-28)		4027





687

STATE OF WEST VIRGINIA  
DEPARTMENT OF MINES  
OIL AND GAS DIVISION

WELL RECORD  
TO BE ABANDONED

Permit No. LEW-600-A

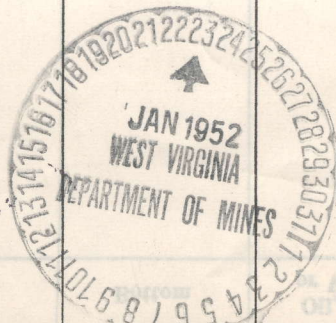
Oil or Gas Well GAS  
(KIND)

Company Carnegie Natural Gas Company  
Address 1015 Frick Building, Pittsburgh, Pa.  
Farm I. J. Davis Acres 55  
Location (waters) West Run  
Well No. 2-902 Elev. 1022  
District Hackers Creek County Lewis  
The surface of tract is owned in fee by I. J. Davis  
Address Jane Lew, W. Va.  
Mineral rights are owned by H. B. Davis,  
304 Magnolia Ave., Address Mannington, W. Va.  
Drilling commenced 3-24-19 D.O.D. 12-5-27  
Drilling completed 4-18-19 D.O.D. 1-4-28  
Date Shot 1-5-28 From 4001 To 4013  
With 40 qts.  
Open Flow /10ths Water in \_\_\_\_\_ Inch  
11/10ths Merc. in 2 516 mcf Inch  
Volume \_\_\_\_\_ Cu. Ft.  
Rock Pressure \_\_\_\_\_ lbs. \_\_\_\_\_ hrs.  
Oil \_\_\_\_\_ bbls., 1st 24 hrs.  
Fresh water \_\_\_\_\_ feet \_\_\_\_\_ feet  
Salt water \_\_\_\_\_ feet \_\_\_\_\_ feet

Casing and Tubing	Used in Drilling	Left in Well	Packers
Size			Kind of Packer
16			
13			
10	<u>140</u>	<u>None</u>	Size of
8 1/4	<u>620</u>	<u>620</u>	
6 5/8	<u>1237</u>	<u>1237</u>	Depth set
5 3/16			
3	<u>4027</u>	<u>4027</u>	Perf. top
2			Perf. bottom
Liners Used			Perf. top
			Perf. bottom

CASING CEMENTED \_\_\_\_\_ SIZE \_\_\_\_\_ No. Ft. \_\_\_\_\_ Date \_\_\_\_\_  
COAL WAS ENCOUNTERED AT \_\_\_\_\_ FEET \_\_\_\_\_ INCHES  
\_\_\_\_\_ FEET \_\_\_\_\_ INCHES FEET \_\_\_\_\_ INCHES  
\_\_\_\_\_ FEET \_\_\_\_\_ INCHES FEET \_\_\_\_\_ INCHES

Formation	Color	Hard or Soft	Top	Bottom	Oil, Gas or Water	Depth Found	Remarks
Big Dunkard			100	200			
Gas Sand			325	380			
First Salt Sand			450	610			
Second Salt Sand			640	720			
Maxon Sand			1077	1115	Gas	1096	
Pencil Cave			1115	1154			
Big Lime			1154	1209			
Big Injun			1209	1343			
Gantz Sand			1525	1570			
Fifty-foot Sand			1620	1660			
Thirty-foot Sand			1688	1708	Gas	1688-1706	
Gordon Stray			1765	1841	Gas	1770	
Gordon & Fourth Sands			1855	1925			
Fifth Sand			2030	2043	Gas	2031-2042	
Total Depth 4-18-19				2071			
Slate & Shells			2655	2665			
Benson Sand			4000	4016	Gas	4006-4012	
Total Depth 1-4-28				4027			



(Over)  
MAY 21 1952



