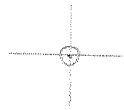


LATITUDE 39° 52' 30"

103° 42' 08"

LONGITUDE



7.5 OGIS topo location

7.5' loc 2325 15' loc _____
 0.61W (calc.) _____

Company _____

Farm _____

Quad WESTON 7 1/2'

County LEWIS

District COURT HOUSE

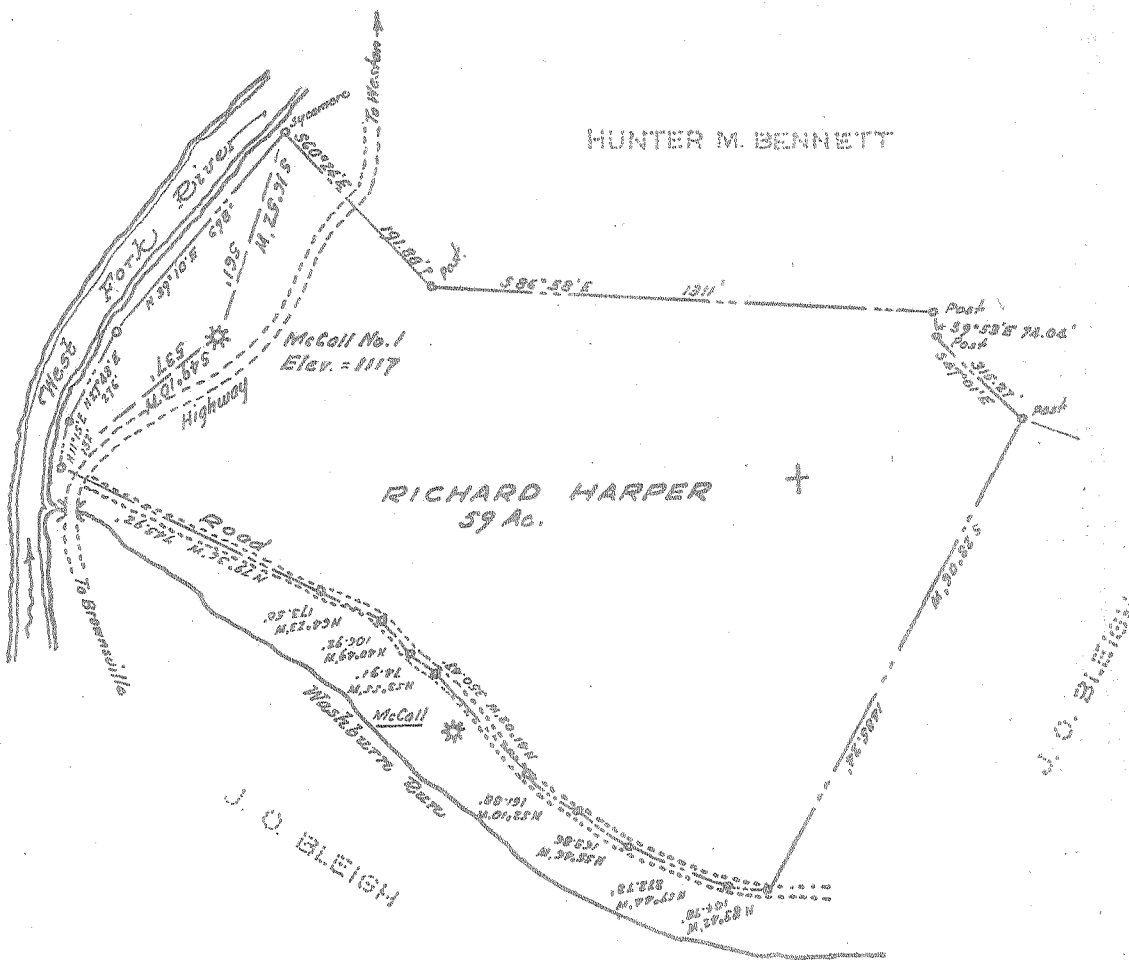
WELL LOCATION MAP

File No. 041-622A

Latitude 39° 05'

Longitude 80° 25'

515
283W



Real estate is owned in fee by Richard Harper, whose postoffice address is Weston, West Va.

- New Location...
- Drill Deeper.....
- Abandonment.....

Company MCCALL DRILLING CO.

Address 612 Keystone Bldg., Pittsburgh, Pa.

Farm Richard Harper

Tract _____ Acres _____ Lease No. _____

Well (Farm) No. One Serial No. 1-67

Elevation (Spirit Level) 1117

Quadrangle Weston

County Lewis District Court House

Engineer W. S. Hart

Engineer's Registration No. 1227

File No. _____ Drawing No. _____

Date November 1953 Scale 1" = 500'

STATE OF WEST VIRGINIA
 DEPARTMENT OF MINES
 OIL AND GAS DIVISION
 CHARLESTON

WELL LOCATION MAP
 FILE NO. LEW-622-A

+ Denotes location of well on United States Topographic Maps, scale 1 to 62,500, latitude and longitude lines being represented by border lines as shown.

- Denotes one inch spaces on border line of original tracing.

RICHARD HARPER NO. 1 (67) WELL.

622A

Court House District, Lewis County, W. Va.
 By McGill Drilling Co., Inc., 612 Keystone Bldg., Pittsburgh, Pa.
 Abandoned under permit Low-622-A; Weston Quadrangle.
 On 60 acres.

Elevation, 1117' L.

Surface owned by Richard Harper, Weston, W. Va., and minerals by
 Truman Gore et al., Clarksburg, W. Va.

Drilling commenced Dec. 17, 1930; completed Jan. 31, 1931.

Volume, 60,000 cu. ft.

10" casing, 158'; 8" casing, 1004' (pulled); 6" casing, 1738' (pulled); 2" tubing, 2575'.

Comb. H. W. packer, 6" x 2, set at 1770'.

Gas well. Record to Dept. of Mines dated Nov. 23, 1953.

Record to RCT from Mrs. Griffith May 10, 1954. Old File No. 716.

	Top.	Bottom.
Clay	0	20
Slate	20	28
Line	28	40
Red rock	40	100
Line	100	140
Red rock	140	200
Slate	200	230
Red rock	230	300
Line	300	340
Red rock	340	375
Line	375	490
Red rock	490	560
Slate	560	640
Sand	640	675
Slate	675	720
Line	720	765
Slate	765	785
Line	785	880
Slate	880	910?
Sand	970?	1020
Line	1020	1080
Sand	1080	1100
Line	1100	1120
Slate	1120	1140
Slate	1140	1180
Line	1180	1205
Sand	1205	1295
Slate	1295	1305
Line	1305	1320
Sand	1320	1380
Nexton Sand	1610	1621
Line	1635	1715
Slate	1715	1720
Line	1720	1780
Sand	1780	1910
Gantz Sand	2118	2168
50-Ft. Sand	2242	2357
Stray Sand	2264	2310
Gordon Sand	2320	2335
5th Sand (show gas)	2524	2529
Total depth		2557



STATE OF WEST VIRGINIA
DEPARTMENT OF MINES
OIL AND GAS DIVISION

716

WELL RECORD

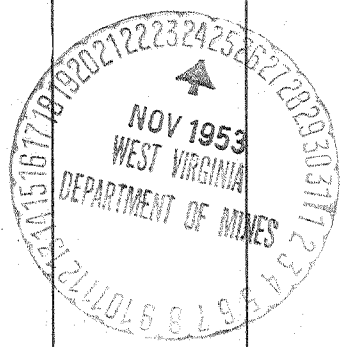
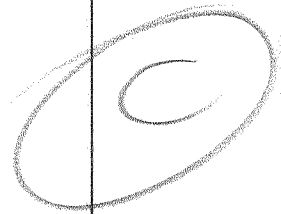
Permit No. 622-A Oil or Gas Well X (KIND)

Company McCall Drilling Co., Inc.
Address 612 Keystone Bldg., Pgh. Penna.
Farm Richard Harper Acres 60
Location (waters) _____
Well No. 1-67 Elev. 1117
District Court House County Lewis
The surface of tract is owned in fee by Richard Harper
Address Weston, W. Va.
Mineral rights are owned by Fruhan Core et al
Clarksburg, W. Va. Address _____
Drilling commenced 12-17-30
Drilling completed 1-25-31
Date Shot _____ From _____ To _____
With _____
Open Flow _____ /10ths Water in _____ Inch
_____ /10ths Merc. in _____ Inch
Volume 60,000 Cu. Ft.
Rock Pressure _____ lbs. _____ hrs.
Oil _____ bbls., 1st 24 hrs.
Fresh water _____ feet _____ feet
Salt water _____ feet _____ feet

Casing and Tubing	Used in Drilling	Left in Well	Packers
Size			Kind of Packer
16			Comb. H. P.
13			Size of <u>6-5/8 x</u>
10	158	158	Depth set <u>1770'</u>
8 1/4	1004	2044	Perf. top _____
6 5/8	1738	none	Perf. bottom _____
5 3/16			Perf. top _____
3			Perf. bottom _____
2	2575	2575	
Liners Used			

CASING CEMENTED _____ SIZE _____ No. Ft. _____ Date _____
COAL WAS ENCOUNTERED AT _____ FEET _____ INCHES
_____ FEET _____ INCHES FEET _____ INCHES
_____ FEET _____ INCHES FEET _____ INCHES

Formation	Color	Hard or Soft	Top	Bottom	Oil, Gas or Water	Depth Found	Remarks
Clay				20			
Slate			20	28			
Line			28	40			
Red Rock			40	100			
Line			100	140			
Red Rock			140	200			
Slate			200	230			
Red Rock			230	300			
Line			300	340			
Red Rock			340	375			
Line			375	490			
Red Rock			490	560			
Slate			560	640			
Sand			640	675			
Slate			675	720			
Line			720	765			
Slate			765	785			
Line			785	880			
Slate			880	910			
Sand			970	1020			
Line			1020	1080			
Sand			1080	1100			
Line			1100	1120			
Slate			1120	1140			
Slate			1140	1180			
Line			1180	1205			
Sand			1205	1295			
Slate			1295	1305			
Line			1305	1320			
Sand			1320	1380			
Saxon Sand			1610	1621			
Line			1685	1715			
Slate			1715	1720			
Line			1720	1780			
Sand			1780	1910			
Ganta Sand			2118	2168			
50# Sand			2242	2257			



Formation	Color	Hard or Soft	Top	Bottom	Oil, Gas or Water	Depth Found	Remarks
Stacy			2264	2310			
Gordon			2320	2335			
5th Sand			2524	2529	Show gas		
Total Depth				2557			

86

Date 11-23-53, 19__

APPROVED McCall Drilling Co. - INC, Owner

By Geo. C. Snapper, Secy
(Title)