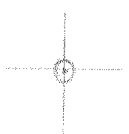


LATITUDE 38° 57' 30"

LONGITUDE 80° 53' 00"



7'5 OGIS topo location

7.5' loc 0.61S 15' loc \_\_\_\_\_  
                  1.98W (calc.) \_\_\_\_\_

Company \_\_\_\_\_

Farm \_\_\_\_\_

Quad PETERSON 7 1/2'

County LEWIS

District COURT HOUSE

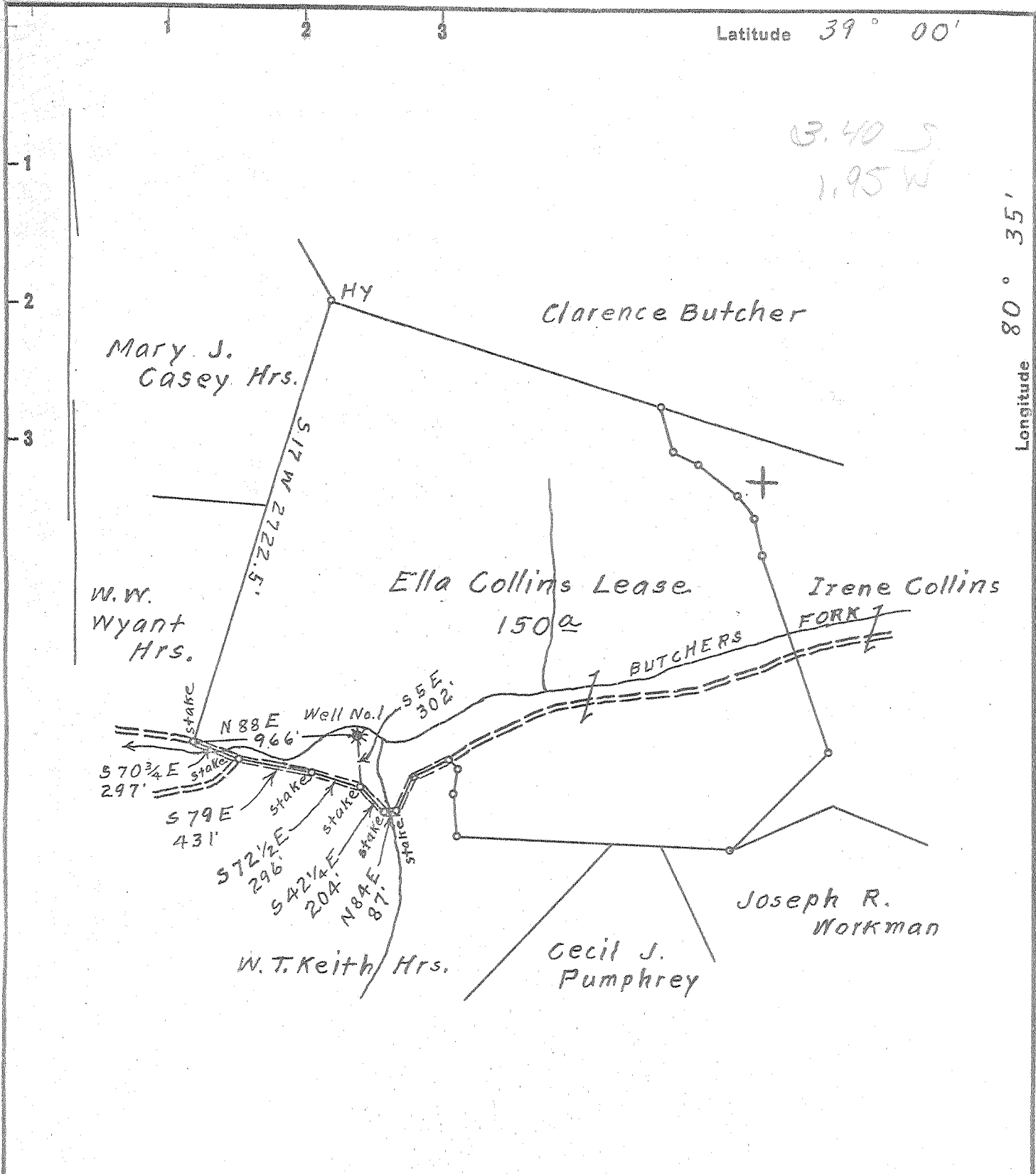
WELL LOCATION MAP

File No. 041-629A

Latitude 39° 00'

Longitude 80° 35'

B. 40 S  
1.95 W



Surface owned by Anna Queen.  
 Address: Mrs. Anna Queen, R.F.D. No. 1, Orlando, W. Va.  
 No Coal.

- New Location
- Drill Deeper
- Abandonment

On 800' Map 38, Sqs. S 35 W 1-2.

Company Raad Supply Co.  
 Address Salem, W. Va.  
 Farm Ella Collins  
 Tract \_\_\_\_\_ Acres 150 Lease No. \_\_\_\_\_  
 Well (Farm) No. 1 Serial No. \_\_\_\_\_  
 Elevation (Spirit Level) Ground - 920.00  
 Quadrangle Burnsville  
 County Lewis District Court House  
 Engineer Elsworth Staines  
 Engineer's Registration No. 2221  
 File No. \_\_\_\_\_ Drawing No. \_\_\_\_\_  
 Date Sept. 8th, 1954 Scale 1" = 800 Feet

STATE OF WEST VIRGINIA  
 DEPARTMENT OF MINES  
 OIL AND GAS DIVISION  
 CHARLESTON

**WELL LOCATION MAP**  
 FILE NO. LEW-629-A

+ Denotes location of well on United States Topographic Maps, scale 1 to 62,500, latitude and longitude lines being represented by border lines as shown.  
 - Denotes one inch spaces on border line of original tracing.



STATE OF WEST VIRGINIA  
DEPARTMENT OF MINES  
OIL AND GAS DIVISION

718

WELL RECORD

Permit No. 699 A Oil or Gas Well \_\_\_\_\_ (KIND)

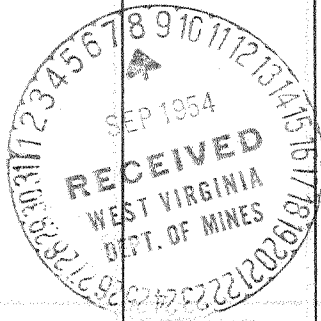
Company Rad Supply Company  
 Address 184 East Main St., Salem, W. Va.  
 Farm Ella Collins Acres 40  
 Location (waters) \_\_\_\_\_  
 Well No. 1 Elev. 970 (90)  
 District Court House County Lewis  
 The surface of tract is owned in fee by \_\_\_\_\_  
 Address \_\_\_\_\_  
 Mineral rights are owned by \_\_\_\_\_  
 Address \_\_\_\_\_  
 Drilling commenced \_\_\_\_\_  
 Drilling completed \_\_\_\_\_  
 Date Shot \_\_\_\_\_ From \_\_\_\_\_ To \_\_\_\_\_  
 With \_\_\_\_\_  
 Open Flow \_\_\_\_\_ /10ths Water in \_\_\_\_\_ Inch  
 \_\_\_\_\_ /10ths Merc. in \_\_\_\_\_ Inch  
 Volume \_\_\_\_\_ Cu. Ft.  
 Rock Pressure \_\_\_\_\_ lbs. \_\_\_\_\_ hrs.  
 Oil \_\_\_\_\_ bbls., 1st 24 hrs.  
 Fresh water \_\_\_\_\_ feet \_\_\_\_\_ feet  
 Salt water \_\_\_\_\_ feet \_\_\_\_\_ feet

| Casing and Tubing | Used in Drilling | Left in Well | Packers        |
|-------------------|------------------|--------------|----------------|
| Size              |                  |              | Kind of Packer |
| 16                |                  |              |                |
| 18                |                  |              |                |
| 10                | 212'             | 212'         | Size of        |
| 8 1/4             | 970'             | 970'         |                |
| 6 5/8             | 1925'            | 1925'        | Depth set      |
| 5 3/16            |                  |              |                |
| 3                 | 2566'            | 2566'        | Perf. top      |
| 2                 |                  |              | Perf. bottom   |
| Liners Used       |                  |              | Perf. top      |
|                   |                  |              | Perf. bottom   |

CASING CEMENTED NO SIZE \_\_\_\_\_ No. Ft. \_\_\_\_\_ Date \_\_\_\_\_

COAL WAS ENCOUNTERED AT \_\_\_\_\_ FEET \_\_\_\_\_ INCHES  
 \_\_\_\_\_ FEET \_\_\_\_\_ INCHES FEET \_\_\_\_\_ INCHES  
 \_\_\_\_\_ FEET \_\_\_\_\_ INCHES FEET \_\_\_\_\_ INCHES

| Formation    | Color | Hard or Soft | Top  | Bottom | Oil, Gas or Water | Depth Found | Remarks |
|--------------|-------|--------------|------|--------|-------------------|-------------|---------|
| Big Dunkard  |       |              | 775  | 810    |                   |             |         |
| Salt Sand    |       |              | 1330 | 1705   |                   |             |         |
| Big Lime     |       |              | 1914 | 1980   |                   |             |         |
| Big Injun    |       |              | 1980 | 2135   |                   |             |         |
| Gordon Stray |       |              | 2507 | 2525   |                   |             |         |
| Oil          |       |              |      |        | 2517              |             |         |
| Gordon       |       |              | 2542 | 2566   |                   |             |         |
| Total Depth  |       |              |      | 2566   |                   |             |         |



(Over)

NOV 12 1954

