

Latitude

Longitude

1215  
189w

**Topo Location**

7.5' Loc. \_\_\_\_\_ 15' Loc. \_\_\_\_\_  
(calc.) \_\_\_\_\_

Company \_\_\_\_\_

Farm \_\_\_\_\_

15' Quad \_\_\_\_\_  
(sec.)

7.5' Quad Camden

District Court House

**WELL LOCATION PLAT**

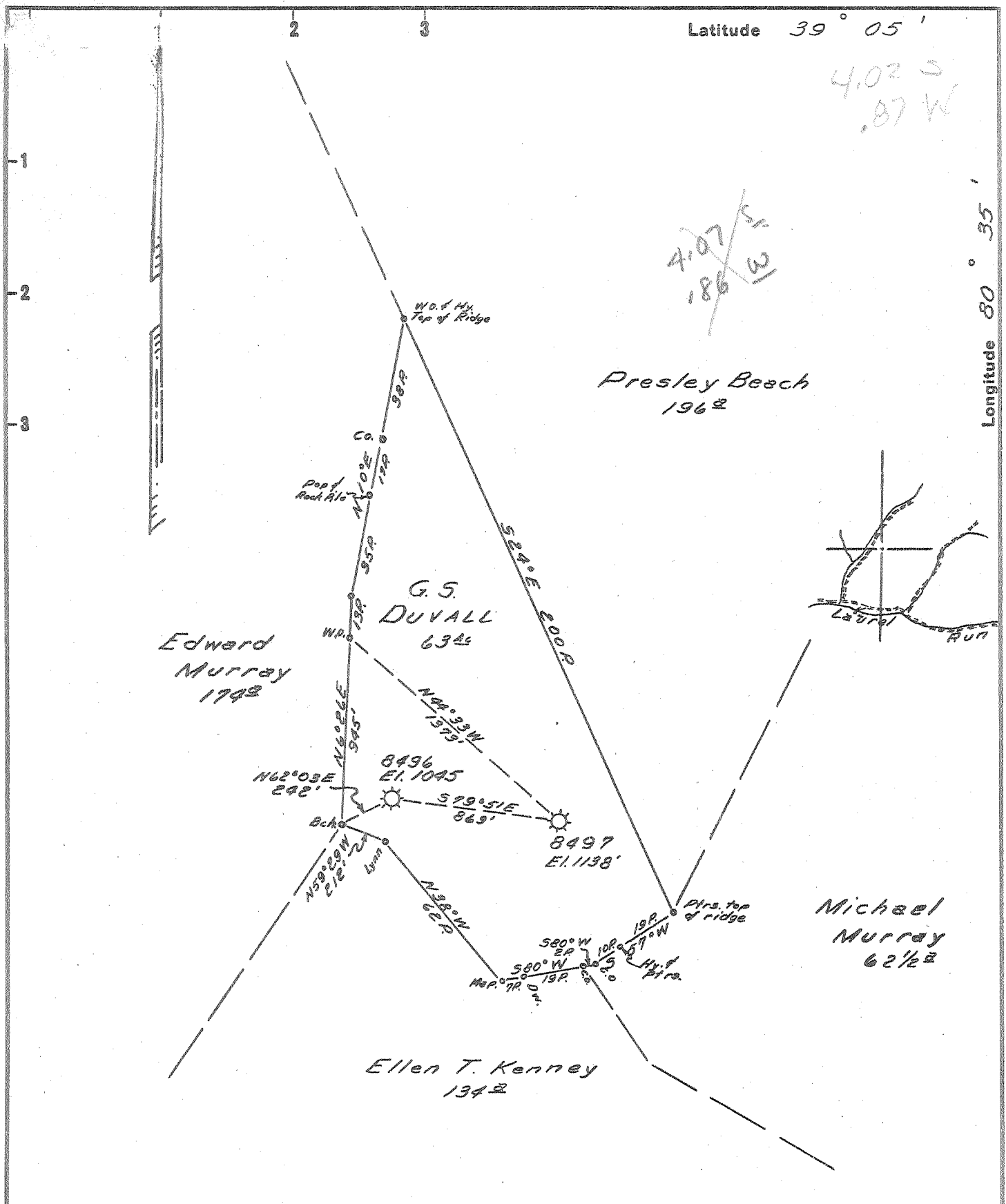
County 041 Permit 30674

Latitude 39° 05'

4.02 S  
.87 W

~~4.07 S  
1.86 W~~

Longitude 80° 35'



New Location...   
 Drill Deeper.....   
 Abandonment.....

Now Owned by: Lu Ray Land Inc.  
 1918 Jefferson Blvd.  
 Pt Pleasant W.Va.

Map Sheet 72; S-30 W-1; F.B. 1179; P.12-13

Company HOPE NATURAL GAS CO.  
 Address CLARKSBURG, W. VA.  
 Farm G.S. DUVALL  
 Tract \_\_\_\_\_ Acres 63 Lease No. 53335  
 Well (Farm) No. \_\_\_\_\_ Serial No. 8497  
 Elevation (Spirit Level) 1138'  
 Quadrangle VADIS  
 County LEWIS District COURTHOUSE  
 Engineer Jay H. Bradley  
 Engineer's Registration No. 2425  
 File No. \_\_\_\_\_ Drawing No. \_\_\_\_\_  
 Date 4-8-58 Scale 1"=40P.

STATE OF WEST VIRGINIA  
 DEPARTMENT OF MINES  
 OIL AND GAS DIVISION  
 CHARLESTON

**WELL LOCATION MAP**  
 FILE NO. LEW-674-B

+ Denotes location of well on United States Topographic Maps, scale 1 to 62,500, latitude and longitude lines being represented by border lines as shown.

- Denotes one inch spaces on border line of original tracing.

1957



768

STATE OF WEST VIRGINIA  
DEPARTMENT OF MINES  
OIL AND GAS DIVISION

Quadrangle Yodia

WELL RECORD

Permit No. Lew. 674-A

Oil or Gas Well Gas  
(KIND)

Company Hope Natural Gas Company  
 Address Clarksburg, West Virginia  
 Farm G. S. Duvall Acres 63  
 Location (waters) \_\_\_\_\_  
 Well No. 8497 Elev. 1138  
 District Court House County Lewis  
 The surface of tract is owned in fee by \_\_\_\_\_  
 Address \_\_\_\_\_  
 Mineral rights are owned by \_\_\_\_\_  
 Address \_\_\_\_\_  
 Drilling commenced April 5, 1919  
 Drilling completed June 29, 1919  
 Date Shot \_\_\_\_\_ From \_\_\_\_\_ To \_\_\_\_\_  
 With \_\_\_\_\_  
 Open Flow \_\_\_\_\_ /10ths Water in \_\_\_\_\_ Inch  
 \_\_\_\_\_ /10ths Merc. in \_\_\_\_\_ Inch  
 Volume \_\_\_\_\_ Cu. Ft.  
 Rock Pressure \_\_\_\_\_ lbs. \_\_\_\_\_ hrs.  
 Oil \_\_\_\_\_ bbls., 1st 24 hrs.  
 Fresh water \_\_\_\_\_ feet \_\_\_\_\_ feet  
 Salt water \_\_\_\_\_ feet \_\_\_\_\_ feet

Casing and Tubing	Used in Drilling	Left in Well	Packers
Size			Kind of Packer
16		<u>21'</u>	
13		<del>21'</del>	
10	112	<del>21'</del>	Size of
8 1/2	839	<u>839'</u>	
6 5/8	1860	<u>1860'</u>	Depth set
5 3/16			
3	2730	<u>2730'</u>	Perf. top
2	2701	"	Perf. bottom
2	2598	"	Perf. top
			Perf. bottom

CASING CEMENTED \_\_\_\_\_ SIZE \_\_\_\_\_ No. Ft. \_\_\_\_\_ Date \_\_\_\_\_

COAL WAS ENCOUNTERED AT \_\_\_\_\_ FEET \_\_\_\_\_ INCHES  
 \_\_\_\_\_ FEET \_\_\_\_\_ INCHES \_\_\_\_\_ FEET \_\_\_\_\_ INCHES  
 \_\_\_\_\_ FEET \_\_\_\_\_ INCHES \_\_\_\_\_ FEET \_\_\_\_\_ INCHES

Formation	Color	Hard or Soft	Top	Bottom	Oil, Gas or Water	Depth Found	Remarks
Pittsburgh Coal			165	171			
Dunkard Sand			435	675	Water @	465	
Salt Sand			870	1533	Oil @	1505-10	
Maxon Sand			1714	1728	Gas @	1392	
Injun Sand			1835	1970	Gas @	1911	
Berea Sand			2070	2092			
Gantz Sand			2179	2214			
Stary Sand			2430	2465	Gas @	2450	
Gordon Sand			2478	2520	Gas @	2479	
Fourth Sand					Gas @	2500	
Fifth Sand			2660	2672	Gas @	2660-72	
Total Depth			2548				
Deeper			2676				

DEC 20 1958

