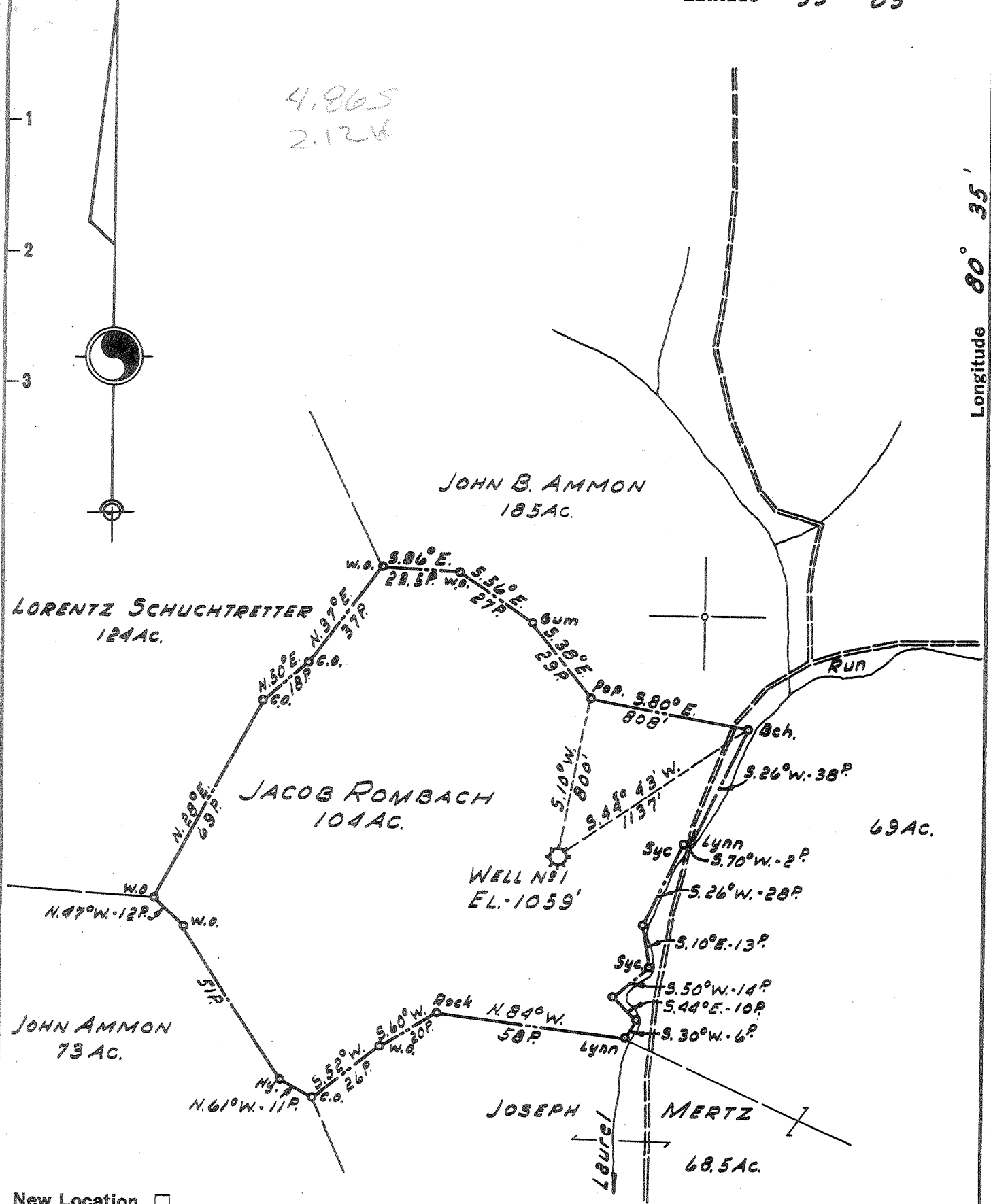


Latitude 39° 05'

Longitude 80° 35'

4.865  
2.1216



- New Location ..
- Drill Deeper ..
- Abandonment ..

Formerly Hope Natural Gas Co. Well No 8490

Company LURAY LAND, INC.  
 Address PT. PLEASANT, WEST VA.  
 Farm JACOB ROMBACH  
 Tract \_\_\_\_\_ Acres 104 Lease No. \_\_\_\_\_  
 Well (Farm) No. 1 Serial No. 8490  
 Elevation (Spirit Level) 1059'  
 Quadrangle VADIS  
 County LEWIS District COURTHOUSE  
 Engineer H. P. SUTER  
 Engineer's Registration No. 1805  
 File No. \_\_\_\_\_ Drawing No. \_\_\_\_\_  
 Date 12-4-58 Scale 1" = 40 POLES

STATE OF WEST VIRGINIA  
DEPARTMENT OF MINES  
OIL AND GAS DIVISION  
CHARLESTON

**WELL LOCATION MAP**  
FILE NO. Lew-702-A

+ Denotes location of well on United States Topographic Maps, scale 1 to 62,500, latitude and longitude lines being represented by border lines as shown.

- Denotes one inch spaces on border line of original tracing.



STATE OF WEST VIRGINIA  
DEPARTMENT OF MINES  
OIL AND GAS DIVISION

799

*W. H. G. G. G.*  
Permit No. 7027A

WELL RECORD

Oil or Gas Well \_\_\_\_\_ (KIND)

Company LuRay Land, Inc.  
Address Capital City Bldg., Charleston, W. Va.  
Farm Jacob Rombsch Acres 104  
Location (waters) \_\_\_\_\_  
Well No. 8490 Elev. 1059'  
District Court House County Lewis  
The surface of tract is owned in fee by \_\_\_\_\_  
Address \_\_\_\_\_  
Mineral rights are owned by \_\_\_\_\_  
Address \_\_\_\_\_  
Drilling commenced 6-2-1914  
Drilling completed 7-25-1914  
Date Shot 5-10-40 From \_\_\_\_\_ To \_\_\_\_\_  
With (Gordon-40 qts) (5th Sand-20 qts)

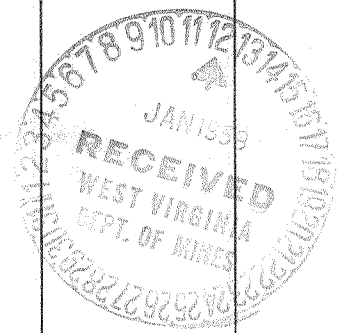
Casing and Tubing	Used in Drilling	Left in Well	Packers
Size			Kind of Packer
16			
13			
10	179'	-0-	Size of
8 1/4	865'	-0-	
6 5/8	1930'	1930'	Depth set
5 3/16			
3	2720'	2720'	Perf. top
2			Perf. bottom
Liners Used			Perf. top
			Perf. bottom

Open Flow \_\_\_\_\_ /10ths Water in \_\_\_\_\_ Inch  
\_\_\_\_\_ /10ths Merc. in \_\_\_\_\_ Inch  
Volume \_\_\_\_\_ Cu. Ft.  
Rock Pressure \_\_\_\_\_ lbs. \_\_\_\_\_ hrs.  
Oil \_\_\_\_\_ bbls., 1st 24 hrs.  
Fresh water \_\_\_\_\_ feet \_\_\_\_\_ feet  
Salt water \_\_\_\_\_ feet \_\_\_\_\_ feet

CASING CEMENTED \_\_\_\_\_ SIZE \_\_\_\_\_ No. Ft. \_\_\_\_\_ Date \_\_\_\_\_  
COAL WAS ENCOUNTERED AT 150 FEET \_\_\_\_\_ INCHES  
\_\_\_\_\_ FEET \_\_\_\_\_ INCHES FEET \_\_\_\_\_ INCHES  
\_\_\_\_\_ FEET \_\_\_\_\_ INCHES FEET \_\_\_\_\_ INCHES

Formation	Color	Hard or Soft	Top	Bottom	Oil, Gas or Water	Depth Found	Remarks
Pittsburgh Coal			150'	153'			
Dunkard Sand			570'	715'			
Salt Sand			1025'	1520'			
Maxon Sand			1710'	1730'			
<del>Line Sand</del>			<del>1780'</del>	<del>1880'</del>	Gas	1780'	
Line Sand			1780'	1880'	Oil	1885'	
Injun Sand			1880'	1975'			
Gordon Sand			2482'	2492'	Gas	2482'	
4th Sand			2504'	2520'			
5th Sand			2660'	2669'	Gas	2662'	
TOTAL DEPTH				2699'			

JUL 23 1959



(Over)

