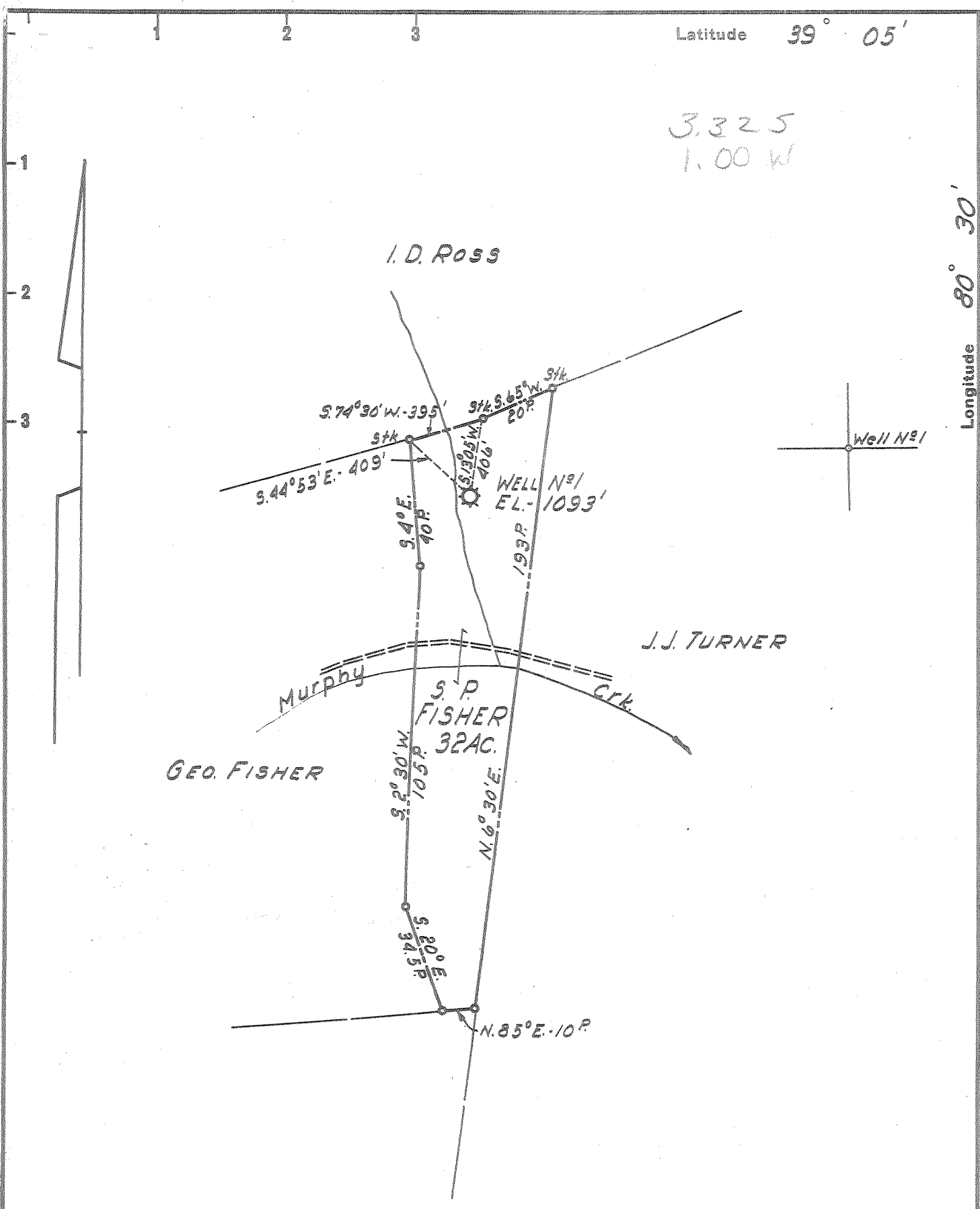


Latitude 39° 05'

3,325  
1.00 W

Longitude 80° 30'



- New Location
- Drill Deeper
- Abandonment

Formerly Hope Natural Gas Co. Well No 8482

Company LURAY LAND, INC.  
 Address POINT PLEASANT, WEST VA.  
 Farm S. P. FISHER  
 Tract \_\_\_\_\_ Acres 32 Lease No. \_\_\_\_\_  
 Well (Farm) No. 1 Serial No. \_\_\_\_\_  
 Elevation (Spirit Level) 1093'  
 Quadrangle VADIS  
 County LEWIS District COURTHOUSE  
 Engineer H. P. SUTER  
 Engineer's Registration No. 1805  
 File No. \_\_\_\_\_ Drawing No. \_\_\_\_\_  
 Date 18 DEC. 1959 Scale 1"=40 POLES

STATE OF WEST VIRGINIA  
DEPARTMENT OF MINES  
OIL AND GAS DIVISION  
CHARLESTON

WELL LOCATION MAP  
FILE NO. LEW-729-A

+ Denotes location of well on United States Topographic Maps, scale 1 to 62,500, latitude and longitude lines being represented by border lines as shown.

- Denotes one inch spaces on border line of original tracing.



828

STATE OF WEST VIRGINIA  
DEPARTMENT OF MINES  
OIL AND GAS DIVISION

Quadrangle WV 25 E

Permit No. 79A

WELL RECORD

Oil or Gas Well \_\_\_\_\_  
(KIND)

Company Hope Natural Gas Company  
& Clarksburg, W. Va.  
Address S. P. Fisher  
Farm \_\_\_\_\_ Acres 3 1/2

Location (waters) \_\_\_\_\_  
Well No. \_\_\_\_\_ Elev. 1093'  
District Court House County Lewis

The surface of tract is owned in fee by \_\_\_\_\_  
Address \_\_\_\_\_

Mineral rights are owned by \_\_\_\_\_  
Address \_\_\_\_\_

Drilling commenced Mar. 29, 1909  
Drilling completed May 31, 1909

Date Shot 3-8-15 From Fifth To Stray  
With \_\_\_\_\_

Open Flow \_\_\_\_\_ /10ths Water in \_\_\_\_\_ Inch  
\_\_\_\_\_ /10ths Merc. in \_\_\_\_\_ Inch

Volume \_\_\_\_\_ Cu. Ft.

Rock Pressure \_\_\_\_\_ lbs. \_\_\_\_\_ hrs.

Oil \_\_\_\_\_ bbls., 1st 24 hrs.

WELL ACIDIZED \_\_\_\_\_

WELL FRACTURED \_\_\_\_\_

RESULT AFTER TREATMENT \_\_\_\_\_

ROCK PRESSURE AFTER TREATMENT \_\_\_\_\_

Fresh Water \_\_\_\_\_ Feet Salt Water \_\_\_\_\_ Feet

Casing and Tubing	Used in Drilling	Left in Well	Packers
Size			Kind of Packer
16			
13			
10	215	215	Size of
8 1/2	874	pulled	
6 5/8	1657	1657	Depth set
5 3/16	2207	pulled	
<del>5</del> 2	2618'3"	pulled	Perf. top
2			Perf. bottom
Liners Used	4-1/2" x 4 390		Perf. top
			Perf. bottom

CASING CEMENTED \_\_\_\_\_ SIZE \_\_\_\_\_ No. Ft. \_\_\_\_\_ Date \_\_\_\_\_

COAL WAS ENCOUNTERED AT \_\_\_\_\_ FEET \_\_\_\_\_ INCHES

\_\_\_\_\_ FEET \_\_\_\_\_ INCHES FEET \_\_\_\_\_ INCHES

\_\_\_\_\_ FEET \_\_\_\_\_ INCHES FEET \_\_\_\_\_ INCHES

Formation	Color	Hard or Soft	Top	Bottom	Oil, Gas or Water	Depth	Remarks
Dunkard Sand			400	500			
Salt Sand			666	1168			
Maxon Sand			1185	1237			
Injun Sand			1645	1770	Gas at 1745		
Gantz Sand			1970	1990			
Fifty Foot Sand			2130	2150			
Thirty Foot Sand			2180	2190			
Stray Sand			2213	2262	Gas at 2230		
Gordon Sand			2270	2288	Gas at 2250		
Fourth Sand			2325	2330			
Fifth Sand			2483	2453	Gas at 2435	2442	
Total Depth			2553				
Deeper			2590				

UNAN 3 1909

Formation	Color	Hard or Soft	Top	Bottom	Oil, Gas or Water	Depth Found	Remarks

Date March 10, \_\_\_\_\_, 19 60

APPROVED LuRayLand, INC. \_\_\_\_\_, Owner

By Byron M. Finch  
 Byron M. Finch <sup>(Title)</sup> Consultant