

**Latitude**

±  
.225  
|  
1.33w

**Longitude**

**Topo Location**

**7.5' Loc.** \_\_\_\_\_ **15' Loc.** \_\_\_\_\_  
\_\_\_\_\_ (calc.) \_\_\_\_\_

**Company** \_\_\_\_\_

**Farm** \_\_\_\_\_

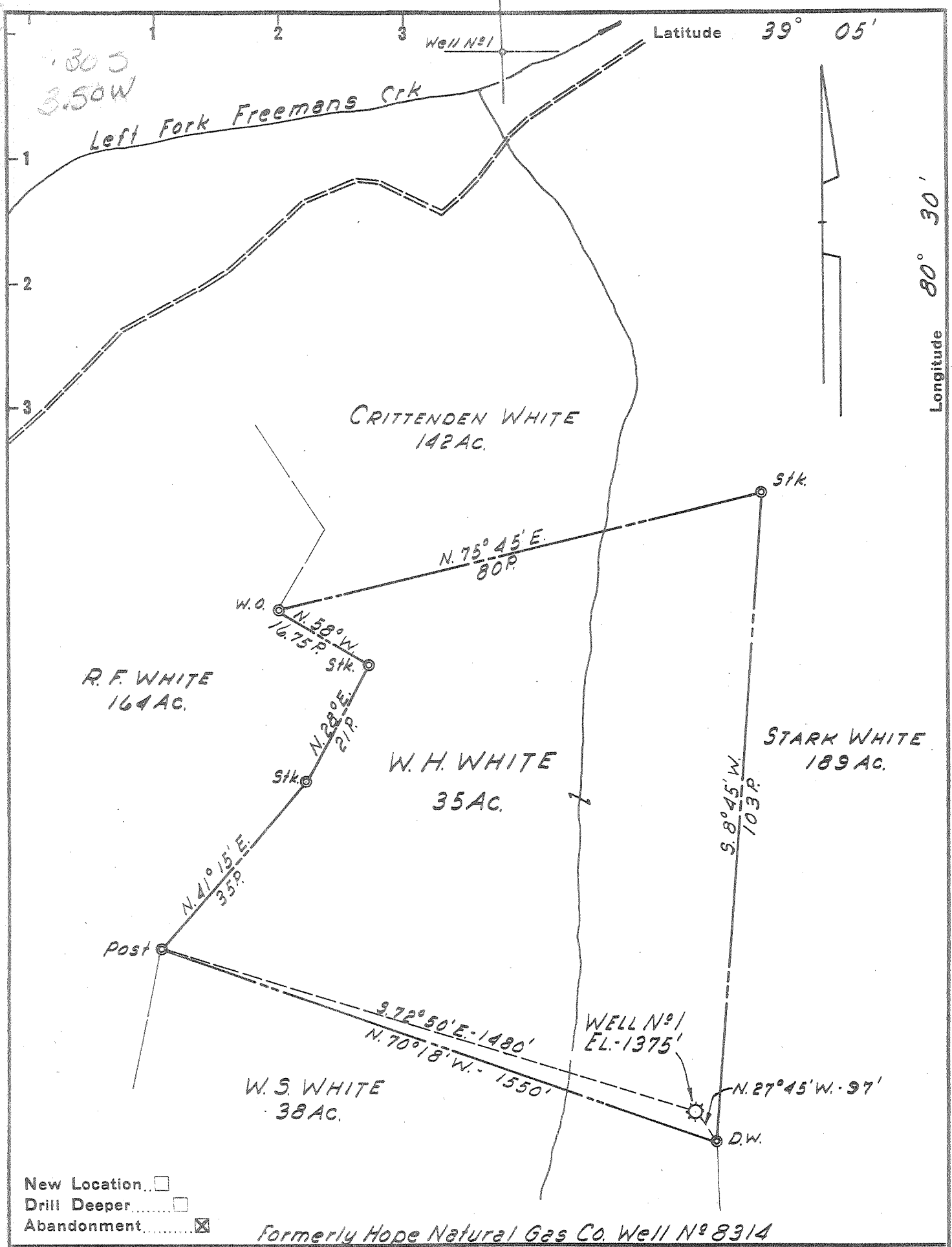
**15' Quad** \_\_\_\_\_  
(sec.)

**7.5' Quad** Carrollton

**District** Freemans Creek

**WELL LOCATION PLAT**

**County** 041 **Permit** 30733



Company	LURAY LAND, INC.
Address	POINT PLEASANT, WEST VA.
Farm	W. H. WHITE
Tract	Acres 35 Lease No.
Well (Farm) No.	1 Serial No. 8314
Elevation (Spirit Level)	1375'
Quadrangle	VADIS SE
County	LEWIS District FREEMANS CRK.
Engineer	H. P. SUTER
Engineer's Registration No.	1805
File No.	Drawing No.
Date	14 DEC. 1959 Scale 1" = 20 POLES

STATE OF WEST VIRGINIA  
DEPARTMENT OF MINES  
OIL AND GAS DIVISION  
CHARLESTON

### WELL LOCATION MAP

FILE NO. LEW-733-A

+ Denotes location of well on United States Topographic Maps, scale 1 to 62,500, latitude and longitude lines being represented by border lines as shown.

- Denotes one inch spaces on border line of original tracing.



522

STATE OF WEST VIRGINIA  
DEPARTMENT OF MINES  
OIL AND GAS DIVISION

Quadrangle John

Permit No. 733-A

WELL RECORD

Oil or Gas Well  (KIND)

Company Hope Natural Gas Company  
Address Clarksburg, W. Va.  
Farm W. H. White Acres 35

Location (waters) \_\_\_\_\_  
Well No. 8314 Elev. 1371

District Freemans Ck. County Lewis

The surface of tract is owned in fee by \_\_\_\_\_  
Address \_\_\_\_\_

Mineral rights are owned by \_\_\_\_\_  
Address \_\_\_\_\_

Drilling commenced Oct. 1, 1914

Drilling completed Nov. 29, 1914

Date Shot 6-29-20 From 5th To \_\_\_\_\_

With 6-24-49 Gordon

Open Flow /10ths Water in \_\_\_\_\_ Inch  
/10ths Merc. in \_\_\_\_\_ Inch

Volume \_\_\_\_\_ Cu. Ft.

Rock Pressure \_\_\_\_\_ lbs. \_\_\_\_\_ hrs.

Oil \_\_\_\_\_ bbls., 1st 24 hrs.

WELL ACIDIZED \_\_\_\_\_

WELL FRACTURED \_\_\_\_\_

RESULT AFTER TREATMENT \_\_\_\_\_

ROCK PRESSURE AFTER TREATMENT \_\_\_\_\_

Fresh Water \_\_\_\_\_ Feet Salt Water \_\_\_\_\_ Feet

Casing and Tubing	Used in Drilling	Left in Well	Packers
Size			Kind of Packer
16			
13			
10	150	pulled	Size of
8 1/4	925	925	
6 5/8	1784	1784	Depth set
5 3/16	2346'6"	2346'6"	
3			Perf. top
2	2650	pulled	Perf. bottom
Liners Used			Perf. top
			Perf. bottom

CASING CEMENTED \_\_\_\_\_ SIZE \_\_\_\_\_ No. Ft. \_\_\_\_\_ Date \_\_\_\_\_

COAL WAS ENCOUNTERED AT \_\_\_\_\_ FEET \_\_\_\_\_ INCHES

\_\_\_\_\_ FEET \_\_\_\_\_ INCHES \_\_\_\_\_ FEET \_\_\_\_\_ INCHES

\_\_\_\_\_ FEET \_\_\_\_\_ INCHES \_\_\_\_\_ FEET \_\_\_\_\_ INCHES

Formation	Color	Hard or Soft	Top	Bottom	Oil, Gas or Water	Depth	Remarks
Native coal			140	145			
Pittsburgh Coal			200	205			
Dunkard sand			670	855			
Gas Sand			<del>420</del> 920	990			
Salt Sand			1015	1340	Gas at	1020	
Maxon Sand			1400	1440	Gas at	1410	
Little Lime			1685	1710			
Big Lime			1720	1775			
Injun Sand			1775	1895	Gas at	1790	
Squaw			1910	1995			
Berea Sand			1910	1995			
Gantz Sand			2080	2120			
Fifty Foot Sand			2155	2235			
Thirty Foot Sand			2280	2300			
Stray Sand			2344	2350			
Gordon Sand			2360	2390	Gas at	2365, 2385, 2597, 2606	
Fifth Sand			2595	2608			
Total Depth			2395				
Deeper			2646				
Deeper			2650				

JUN 29 1920

Formation	Color	Hard or Soft	Top	Bottom	Oil, Gas or Water	Depth Found	Remarks

Date March 10, \_\_\_\_\_, 19 60

APPROVED LuRAY LAND, INC° \_\_\_\_\_, Owner

By Byron M. Finch  
 Byron M. Finch (Title) Consultant