

LATITUDE 39° 07' 30"

LONGITUDE 80° 25' 00"



7'5 OGIS topo location

7.5' loc 1335 15' loc _____
 168W (calc.) _____

Company _____

Farm _____

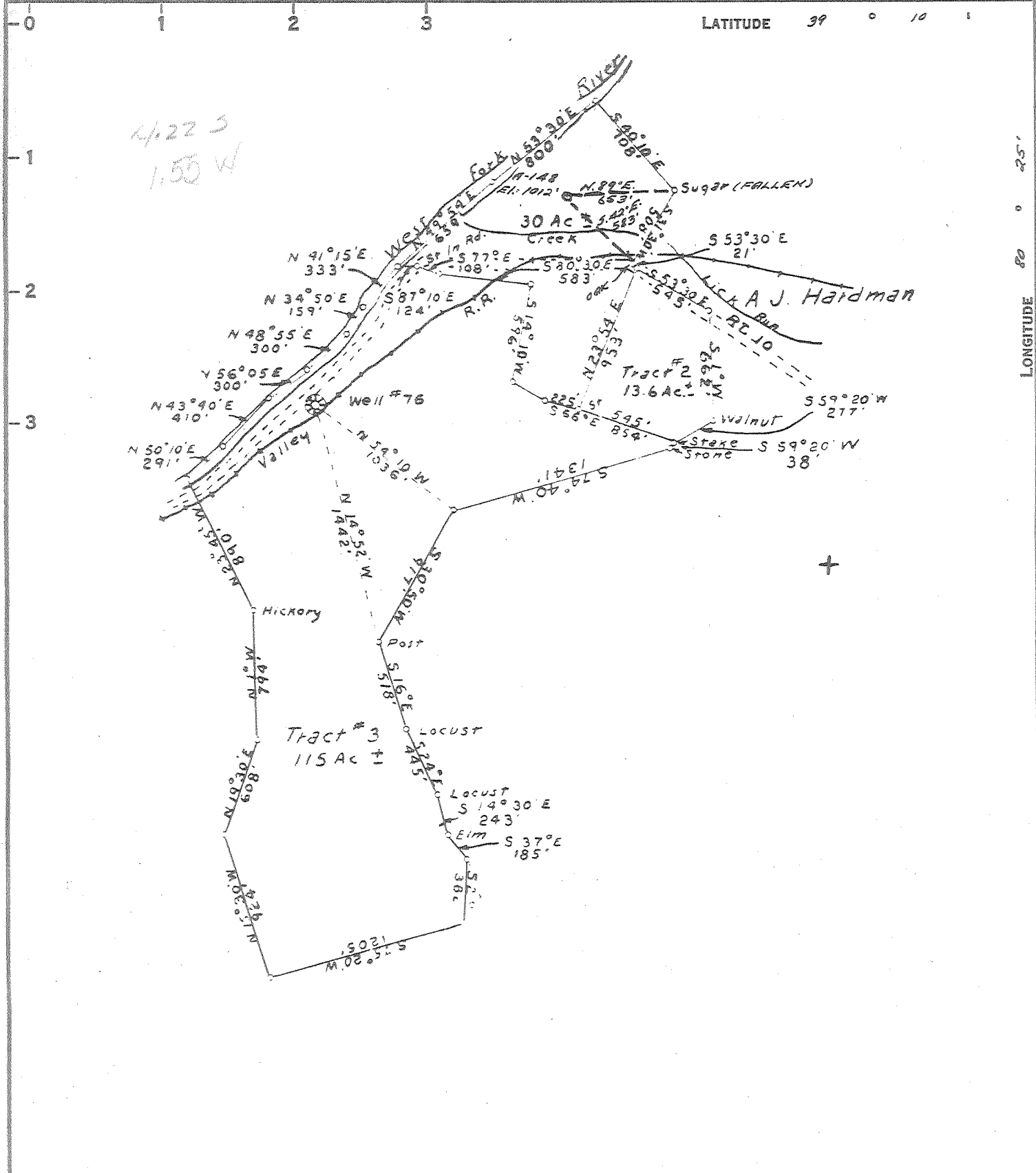
Quad WESTON 7 1/2'

County LEWIS

District HACKERS CREEK

WELL LOCATION MAP

File No. 041-745A



COAL OWNED BY _____

NEW LOCATION.....

DRILL DEEPER.....

ABANDONMENT.....

R-26-17

COMPANY CUMBERLAND & ALLEGHENY GAS

ADDRESS 800 UNION TRUST BLDG. PCH. PA.

FARM E. T. JACKSON

TRACT _____ ACRES 160 LEASE NO. A-226

WELL (FARM) NO. 2 SERIAL NO. A-148

ELEVATION (SPIRIT LEVEL) 1012'

QUADRANGLE WESTON

COUNTY LEWIS DISTRICT HACKERS CR.

ENGINEER John A. Ludan

ENGINEER'S REGISTRATION NO. 12710

FILE NO. _____ DRAWING NO. Y-25-256

DATE 23 DEC. 60 SCALE 1" = 800'

STATE OF WEST VIRGINIA
DEPARTMENT OF MINES
OIL AND GAS DIVISION
CHARLESTON

WELL LOCATION MAP

FILE NO. Lew-745-A

+ DENOTES LOCATION OF WELL ON UNITED STATES TOPOGRAPHIC MAPS, SCALE 1 TO 62,500. LATITUDE AND LONGITUDE LINES BEING REPRESENTED BY BORDER LINES AS SHOWN.

- DENOTES ONE INCH SPACES ON BORDER LINE OF ORIGINAL TRACING.