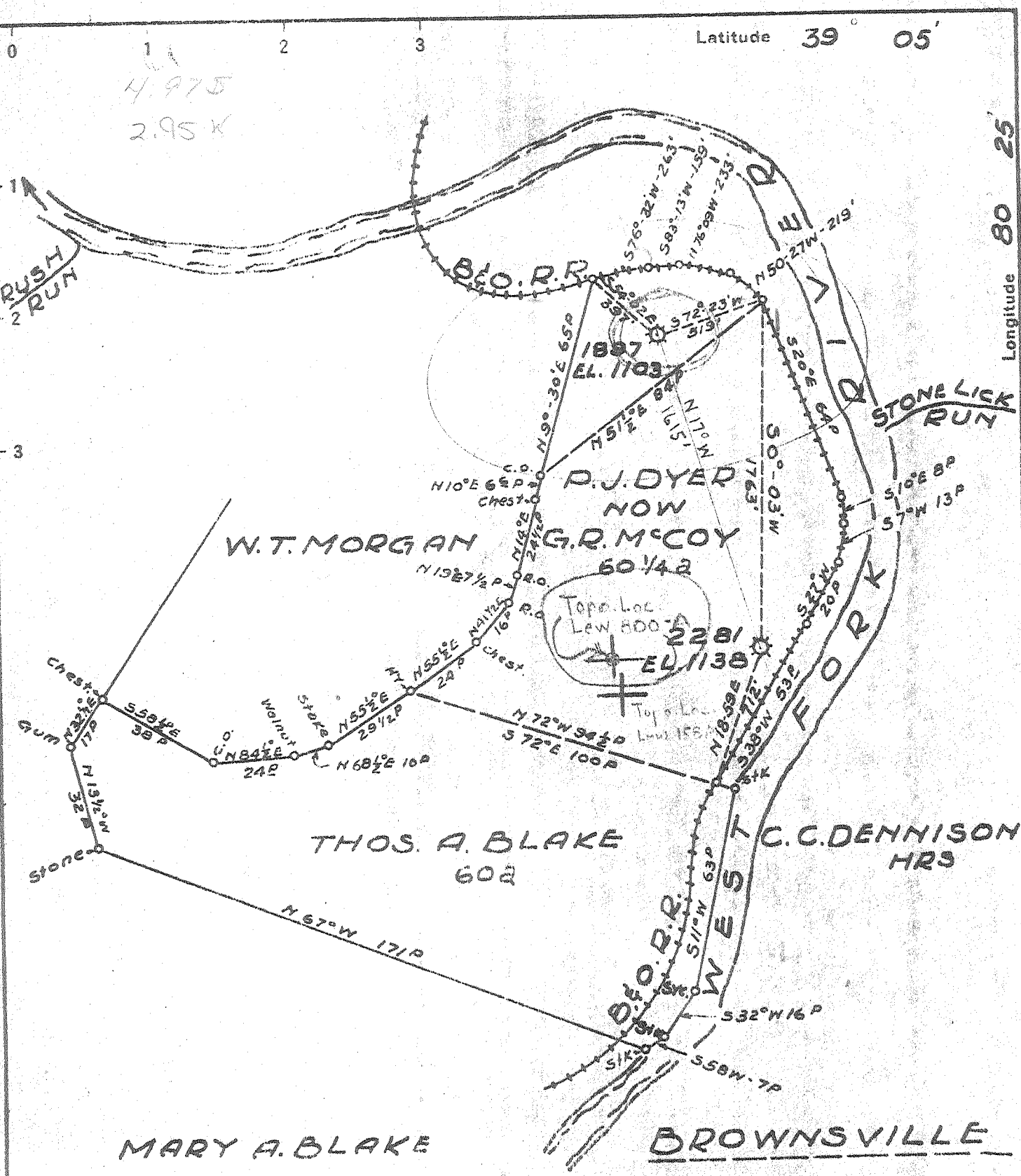


Latitude 39° 05'

Longitude 80° 25'

4.975
2.95 K



New Location
Drill Deeper
Abandonment

K-2281-1899

F.B. 549 P12 - 531 E7 - SHEET 70

Issued 5/27/71

Company BIG SAND DRILLING CO., INC.
HOPKINSVILLE, KY

Address Box 502, JANE LEW, W. VA. 26378
CLARKESBURG, W. VA.

Farm P. J. DYER

Tract 1 Acres 120 Lease No. 21687

Well (Farm) No. 2 / 1 Serial No. 2281

Elevation (Spirit Level) 1138 1103'

Quadrangle WESTON SW

County LEWIS District COURT HOUSE

Engineer Wm Bowers

Engineer's Registration No. 900

File No. _____ Drawing No. _____

Date SEPT. 8-38 Scale 1" = 40 Poles

STATE OF WEST VIRGINIA
DEPARTMENT OF MINES
OIL AND GAS DIVISION
CHARLESTON

WELL LOCATION MAP

FILE NO NEW 158A

Lew-800 (A)

+ Denotes location of well on United States Topographic Maps, scale 1 to 62,500, latitude and longitude lines being represented by border lines as shown.

- Denotes one inch spaces on border line of original tracing.

1506

JUN 5 1971

P. J. DYER NO. 1897 WELL.

No. 118 O.F.-Lewis.

No. 528? L-G, p.....

MAP # 528 CTY RPT.

7004!
loc. on plat 158A

Court House District, Lewis County, W. Va.
Hope Natural Gas Co.
On West Fork River, 0.8 mi. N. of Brownsville.
Completed, April 22, 1910.
Elevation, 1090' B.

	Top.	Bottom.
Conductor	0	10
Salt Sand	1000	1470
Big Lime	1780	1835
Big Injun Sand (gas at 1946')	1835	1970
Gantz? (Berea) Sand (gas, 2180')	2180	2215
Total depth		2259