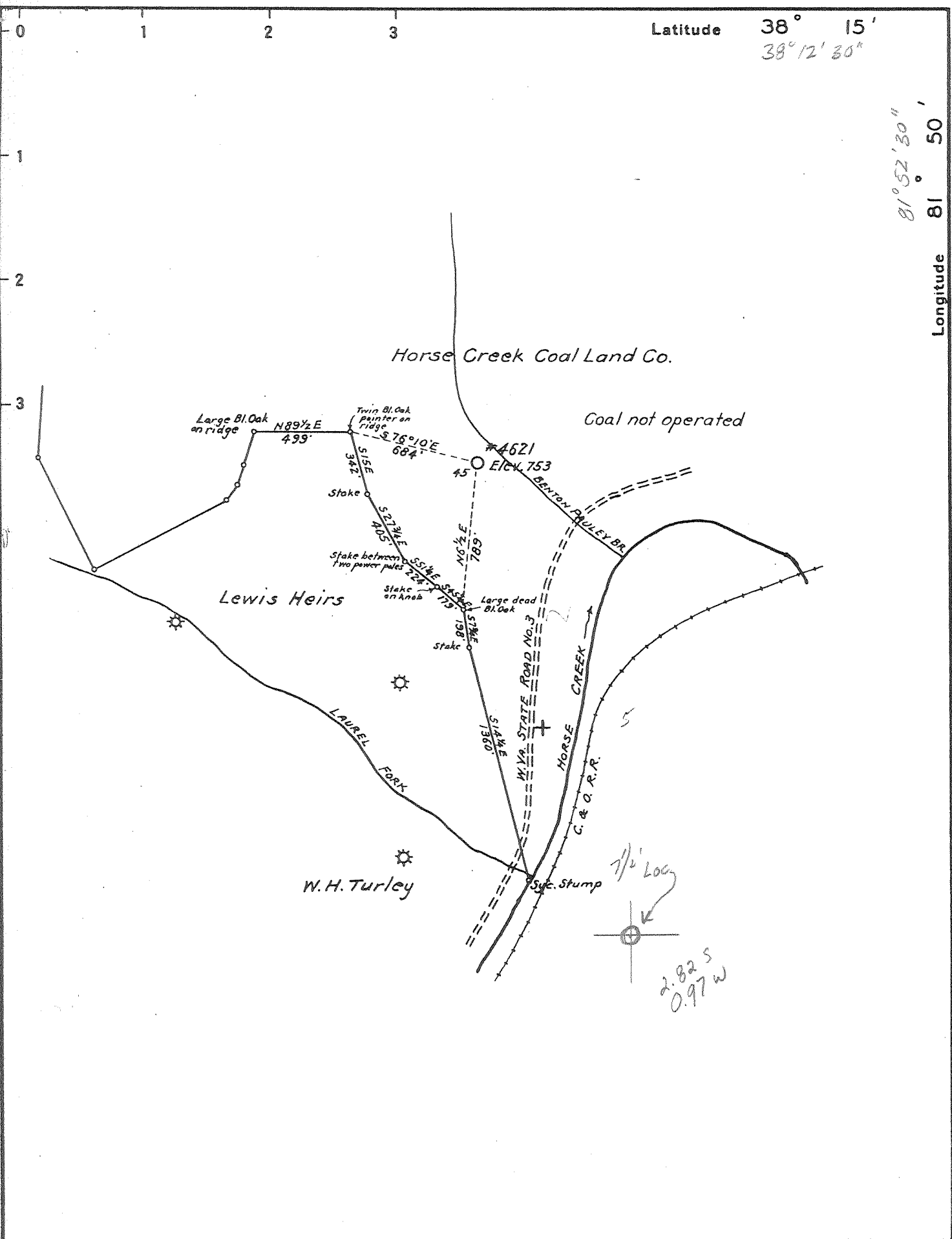


Latitude 38° 15'
38° 12' 30"

Longitude 81° 50'
81° 52' 30"



Company UNITED FUEL GAS CO.
 Address CHARLESTON, W.VA.
 Farm HORSE CREEK COAL LAND CO.
 Tract Acres 10,300 Lease No. 3772
 Well (Farm) No. 45 Serial No. 4621
 Quadrangle MADISON
 County LINCOLN
 District DUVAL
 Engineer [Signature]
 Engineer's Registration No. 659
 File No. 46-45 Drawing No. _____
 Date APRIL 7, 1936 Scale 1" = 660'

STATE OF WEST VIRGINIA
 DEPARTMENT OF MINES
 OIL AND GAS DIVISION
 CHARLESTON

WELL LOCATION MAP
 FILE NO. LIN - 167

+ Denotes location of well on United States Topographic Maps, scale 1 to 62,500, latitude and longitude lines being represented by border lines as shown.
 - Denotes one inch spaces on border line of original tracing.

LINCOLN 167 Horse Creek Coal Land Co (4621).

MADISON QUAD.
NC

elev = 753'

38° 15'

81° 50'

15' location

S 5.73

W 3.23



Julian-Madison

(636)

DEEP WELL

Horse Creek Coal Land Company No. 4621 Well.

Duval District, Lincoln County, W. Va.

By United Fuel Gas Company.

Permit No. Lin-167.

Elevation, 753' B.

901 M. cu. ft. gas.

Located 5.73 mi. S. of 38° 15' and 3.23 mi. W. of 81° 50'—NC—Madison
Quadrangle.

On north side of Horse Creek, north of road.

0.54 mi. N. of Woodville; 2.25 mi. S. W. of Pinnacle.

	Top.	Bottom.	Thickness.	Elevation (top)
Big Lime -----	1430	1603	173	— 677
Big Injun Sand-----	1603	1640	37	— 850
Berea Sand -----	2084	2103	19	—1331
Corniferous Lime-----	4276	4279	3+	—3523

Thickness, Devonian Shales, 2173 feet.

Total depth, 4279'.

Remarks: Completed Aug. 5, 1936.

Shot at 2947-4275' approx.

Gas, 569'. Gas, 1545' (Big Lime).

On 10,300 acres.

Duval District, Lincoln County, W. Va.
 By United Fuel Gas Co., Charleston, W. Va.
 On 10,300 acres. Lat. 38-15; Long. 81-50 block; Madison Quad.
 Drilled under permit Lin-167.
 Elevation, 753' E.
 16" conductor; 8 $\frac{1}{2}$ " casing, 418'; 6 $\frac{3}{8}$ ", 1480'.
 Heeter hook wall packer, 3 x 6 $\frac{3}{8}$ ", set at 2103'.
 Casing not perforated.
 Coal was encountered at 125-128, 155-158, and 385-387'.
 Completion reported to Dept. of Mines Sept. 1, 1936.
 Well was shot at 2947 to 4275', approx.
 Gas well. 901 M. cu. ft.
 Record from Miss Griffith 4-14-37.

Lin #167

	Top.	Bottom.	Thickness.
Surface	0	45	45
Sand	45	90	45
Slate	90	95	5
Sand	95	110	15
Slate	110	125	15
Coal	125	128	3
Slate	128	155	27
Coal	155	158	3
Slate and shells	158	385	127
Coal	385	387	2
Slate	387	415	28
Slate and shells	415	525	110
Gas Sand (gas, 569')	525	710	185
Slate	710	715	5
Salt Sand	715	1022	307
Slate	1022	1024	2
Salt Sand	1024	1229	205
Slate and red rock	1229	1255	26
Slate	1255	1305	50
Slate and red rock	1305	1339	34
Maxton Sand	1339	1386	47
Slate	1386	1398	12
Little Lime	1398	1430	32
Big Lime (gas, 1545')	1430	1603	173
Big Injun Sand, red	1603	1640	37
Slate and shells	1640	1735	95
Big shell	1735	1805	70
Slate and shells	1805	2017	212
Shell	2017	2032	15
Slate	2032	2069	37
Brown shale <i>collec</i>	2069	2084	15
Berea Sand	2084	2103	19
Slate	2103	2118	15
Shell	2118	2138	20
Slate	2138	2183	45
Shell (SLM)	2183	2193	10
Slate	2193	3261	1068
Brown shale	3261	3298	37
Slate and shells	3298	3440	142
Brown shale	3440	3460	20
Slate	3460	3484	24
Brown shale	3484	3500	16
Slate	3500	3600	100

(OVER)

DEEP WELL

HORSE CREEK COAL LAND CO. NO. 4621 WELL (Continued).

	Top.	Bottom.	Thickness.
Brown shale	3600	- 3659	59
Slate, white	3659	- 4070	411
Brown shale	4070	- 4235	165
Black shale	4235	- 4276	41
Corniferous lime	4276	- 4279	3
Total depth (SLM)		4279	

HORSE CREEK COAL LAND CO. NO. 4621 WELL. No. 455 O.F.-Lincoln.

Duval District, Lincoln County, W. Va.
 By United Fuel Gas Co., Charleston, W. Va.
 On 10,300 acres. Lat. 33-15; Long. 81-50 block; Madison Quad.
 Drilled under permit Lin-167.
 Elevation, 753' E.
 16' conductor; 8" casing, 418'; 6" casing, 1450'.
 Heeter hook wall packer, 3 x 6", set at 2103'.
 Casing not perforated.
 Coal was encountered at 125-128, 155-158, and 385-387'.
 Completion reported to Dept. of Mines Sept. 1, 1936.
 Well was shot at 2947 to 4275', approx.
 Gas well. 901 M. cu. ft.
 Record from Miss Griffith 4-14-37.

Lin #167

	Top.	Bottom.	Thickness.
Surface	0	45	45
Sand	45	90	45
Slate	90	95	5
Sand	95	110	15
Slate	110	125	15
Coal	125	128	3
Slate	128	155	27
Coal	155	158	3
Slate and shells	158	385	127
Coal	385	387	2
Slate	387	415	28
Slate and shells	415	525	110
Gas Sand (gas, 569')	525	710	185
Slate	710	715	5
Salt Sand	715	1022	307
Slate	1022	1024	2
Salt Sand	1024	1229	205
Slate and red rock	1229	1255	26
Slate	1255	1305	50
Slate and red rock	1305	1339	34
Marion Sand	1339	1386	47
Slate	1386	1398	12
Little Lime	1398	1430	32
Big Lime (gas, 1545')	1430	1603	173
Big Injun Sand, red	1603	1640	37
Slate and shells	1640	1735	95
Big shell	1735	1805	70
Slate and shells	1805	2017	212
Shell	2017	2032	15
Slate	2032	2069	37
Brown shale	2069	2084	15
Berea Sand	2084	2103	19
Slate	2103	2118	15
Shell	2118	2138	20
Slate	2138	2183	45
Shell (SLM)	2183	2193	10
Slate	2193	3261	1068
Brown shale	3261	3298	37
Slate and shells	3298	3440	142
Brown shale	3440	3460	20
Slate	3460	3484	24
Brown shale	3484	3500	16
Slate	3500	3600	100

(OVER)

HORSE CREEK COAL LAND CO. NO. 4621 WELL (Continued).

	Top.	Bottom.	Thickness.
Brown shale	3600	- 3659	59
Slate, white	3659	- 4070	411
Brown shale	4070	- 4235	165
Black shale	4235	- 4276	41
Coniferous Lime	4276	- 4279	3
Total depth (SLM)		4279	