

AM

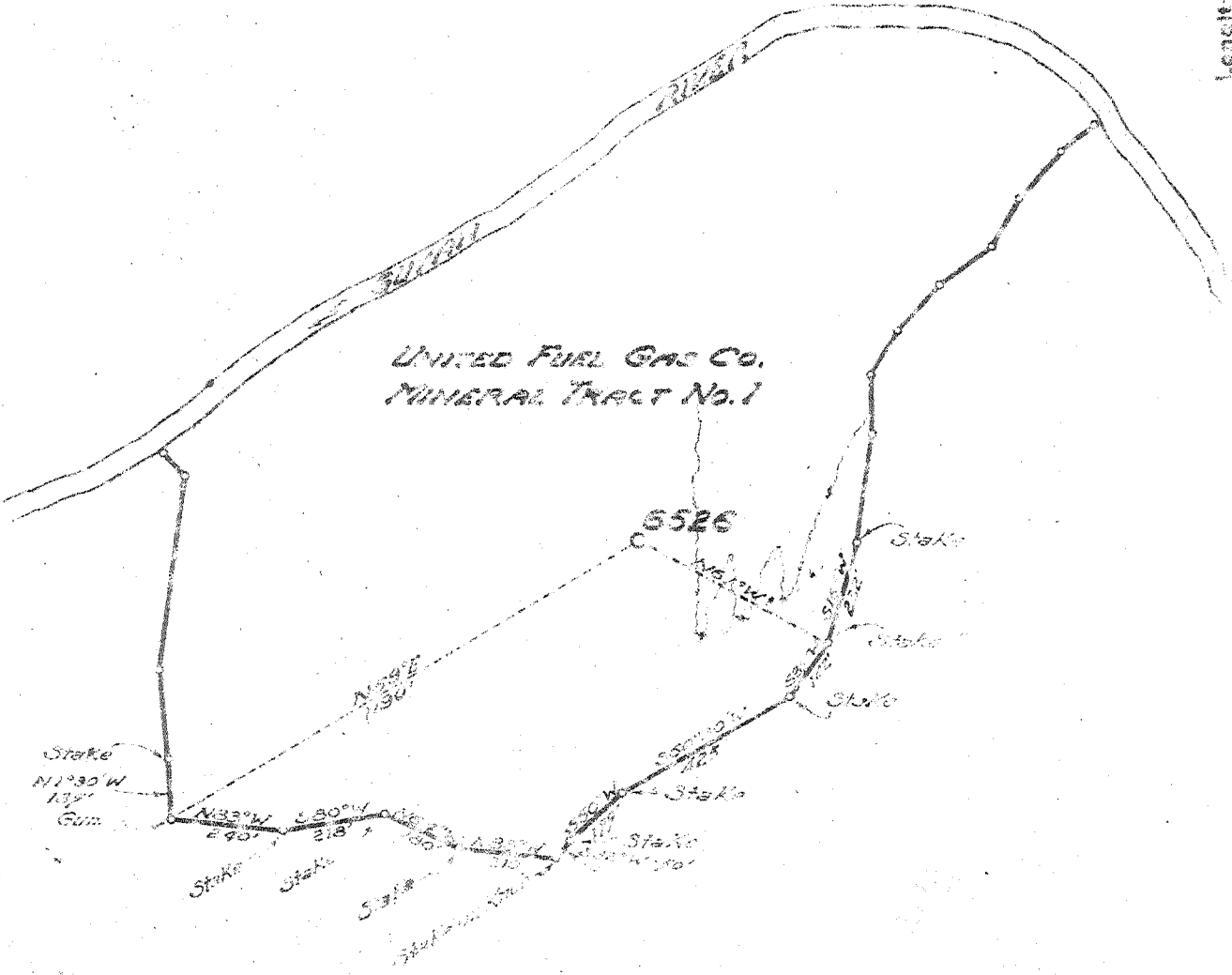
Latitude 33 05 P

1.03 S
2.22 W

SWEETLAND LAND &
MINERAL CO. OPR.

UNITED FUEL GAS CO.
MINERAL TRACT No. 1

UNITED FUEL GAS CO.
MINERAL TRACT No. 1



New Location

Drill Deeper

Abandonment

Company	UNITED FUEL GAS CO.
Address	CHARLESTON, W.VA.
Farm	UNITED FUEL GAS CO. MINERAL
Tract	1 Acres 13282.47 ^{1/2} Part Lease No. 24636
Well (Farm) No.	Serial No. 6526
Elevation (Spirit Level)	665.98
Quadrangle	MIDKIFF S
County	LINCOLN District HARTSGREEN
Engineer	
Engineer's Registration No.	652
File No.	34-39 Drawing No.
Date	2-17-43 Scale 1"=500'

STATE OF WEST VIRGINIA
DEPARTMENT OF MINES
OIL AND GAS DIVISION
CHARLESTON

WELL LOCATION MAP
FILE NO. LIN-912

+ Denotes location of well on United States Topographic Maps, scale 1 to 62,500, latitude and longitude lines being represented by border lines as shown.

- Denotes one inch spaces on border line of original tracing.

No. 50163 6-6 275

Deer Hall

UNITED FUEL GAS CO. (MIN TR. 1) NO. 6526 WELL

Harts Creek District, Lincoln County, W. Va.

By U. F. G. Co., Box 1273, Charleston, W. Va.

Drilled under permit Lin-912; McKiff Quad.

On 19,282.47 acres on Harts Creek. Elevation 865.98' L.

Minerals owned by U. F. G. Co., Charleston, W. Va.

Drilling commenced Apr. 17/50; completed June 19/50.

Shot June 26/50: 2312-3591' with 9066 2/3# gelatin.

Open flow 2/10ths W in 2". Volume, 60,000 cu. ft. Shale and Berea

Rock pressure 400 lbs. in 48 hrs. Fresh water 240' hole full.

10" casing, 20'5"; 8 1/4", 296'; 7"1579', all left in.

Gas show 1675', Injun gas test 10/10 W 1", 33 M/ 2306', 3/10 W 1", 18 M;

2315-2319A 10/10 W 1", 33 M; 3/10 W 1", 18 M; top of Shale; No gas in

Shale before shot. Before shot, 2/10 W 1", 15 M; Shot 6/26/50, 9066 2/3#

gelatin at 2312-3591', test 48 hrs. after shot, 2/10 W 2", 60 M; Final

open flow 60 M, Shale and Berea. 48 Hr. R.P. 400#. Shut in 6/27/50, in

7" casing.

Gas well. Record from Smith, Feb. 18/51.

	Top	Bottom
Surface	0	13
Sandstone	13	26
Slate	26	38
Sand	38	65
Slate	65	72
Sand	72	130
Slate	130	165
Sand	165	210
Slate	210	242
Sand	242	258
Slate	258	275
Sand	275	330
Slate	330	370
Sand	370	410
Slate	410	445
sand	445	508
Slate	508	620
Sand	630	635
Slate	635	725
Lime sand	725	780
Slate	780	790
Salt Sand	790	1180
Slate	1180	1195
Black lime shell	1195	1215
Slate	1215	1220
White lime shell	1220	1242
Slate	1242	1255
Lime	1255	1350
Sand	1350	1430
Slate	1430	1447
Red rock	1447	1460
Slate	1460	1475
Maxton Sand	1475	1500
Slate	1500	1511
Little Lime	1511	1548
Pencil Cave	1548	1558
Big Lime	1558	1755
Red rock	1755	1778
Big Injun Sand	1778	1785

	Top	Bottom
Slate	1785	1795
Line shell	1795	1810
Slate and shells	1810	1912
Line shells	1912	1982
Slate and shells	1982	2282
Brown shale	2282	2305
Berea Sand	2305	2319
Slate and shells	2319	2330
Line shell	2330	2390
Slate and shells	2390	2415
Line shells	2415	2435
Slate and shells	2435	2565
Black line shell	2565	2589
Slate and shells	2589	2898
Gray slate	2898	3280
Brown shale	3280	3583
White slate	3583	3910
Brown shale	3910	4043
Corniferous lime	4043	4046
Total depth		4046
Filled back to		3591

WEST VIRGINIA DEPARTMENT OF MINES
OIL & GAS DIVISION
W E L L R E C O R D

Permit No. Lin 912
Midkiff Quad.

Gas Well
CASING & TUBING

Company	United Fuel Gas Co.			
Address	P.O. Box 1273, Charleston 25, W.Va.			
Farm	U.F.G. Co. Min. Tr. #1	A 19,282.47	10	20'5
Location	Harts Creek		8 1/2	296
Well No.	6526	Elev. 865.98'	7	1579
District	Harts Creek	Lincoln County		
Surface				
Mineral				
Commenced	4-17-50			
Completed	6-19-50			
Date shot	6-26-50	Depth 2312 to 3591		
Open flow	2/10ths W in 2"	with 9066 2/3# gel.		
Volume	60 M Shale and Berca			
Rock Pressure	400 lbs. 48 hrs.			
Fresh Water	240' H.F.			

Surface	0	13	Slate & Shells	2589	2898
Sandstone	13	26	Gray Slate	2898	3280
Slate	26	38	Brown Shale	3280	3583
Sand	38	65	White Slate	3583	3910
Slate	65	72	Brown Shale	3910	4043
Sand	72	130	Corniferous Lime	4043	4046
Slate	130	165	T.D.	4046	
Sand	165	210			
Slate	210	242	Filled back to 3591'		
Sand	242	258	Gas 1675' show		
Slate	258	275	Injun Gas test 19/10 W 1" 33 M		
Sand	275	330	Test 2305' 3/10 W 1" 18 M		
Slate	330	370	Gas 2316-2319' 10/10 W 1" 33 M		
Sand	370	410	Test 3/10 W 1" 18 M top of Shale		
Slate	410	445	No gas in Shale before shot		
Sand	445	508	Test before shot 2/10 W 1" 15 M		
Slate	508	620	Shot 6-26-50 with 9066 2/3# DuPont		
Sand	620	635	Gelatin from 2312-3591'		
Slate	635	725	Test 48 hrs. after shot 2/10 W 2" 60 M		
Lime Sand	725	780			
Slate	780	790	Final open flow: 60 M Shale and Berca		
Salt Sand	790	1180	1180 48 hr. R.P. 400#		
Slate	1180	1195			
Black Lime Shell	1195	1215	Shut in 6-27-50 in 7" casing.		
Slate	1215	1229			
White Lime Shell	1220	1242			
Slate	1242	1255			
Lime	1255	1350			
Sand	1350	1430			
Slate	1430	1447			
Red Rock	1447	1460			
Slate	1460	1475			
Maxon Sand	1475	1500			
Slate	1500	1511			
Little Lime	1511	1548			
Pencil Cave	1548	1558			
Big Lime	1558	1755			
Red Rock <i>Macedonia</i>	1755	1778			
Injun Sand	1778	1795			
Slate	1785	1795			
Lime Shell	1795	1810			
Slate & Shells	1810	1912			
Lime Shells	1912	1982			
Slate & Shells	1982	2282			
Brown Shale <i>Collee</i>	2282	2305			
Berca Sand	2305	2319			
Slate & Shells	2319	2330			
Lime Shell	2330	2390			
Slate & Shs.	2390	2415			
Lime Shells	2415	2435			
Slate & Shells	2435	2565			
Black Lime Shell	2565	2589			