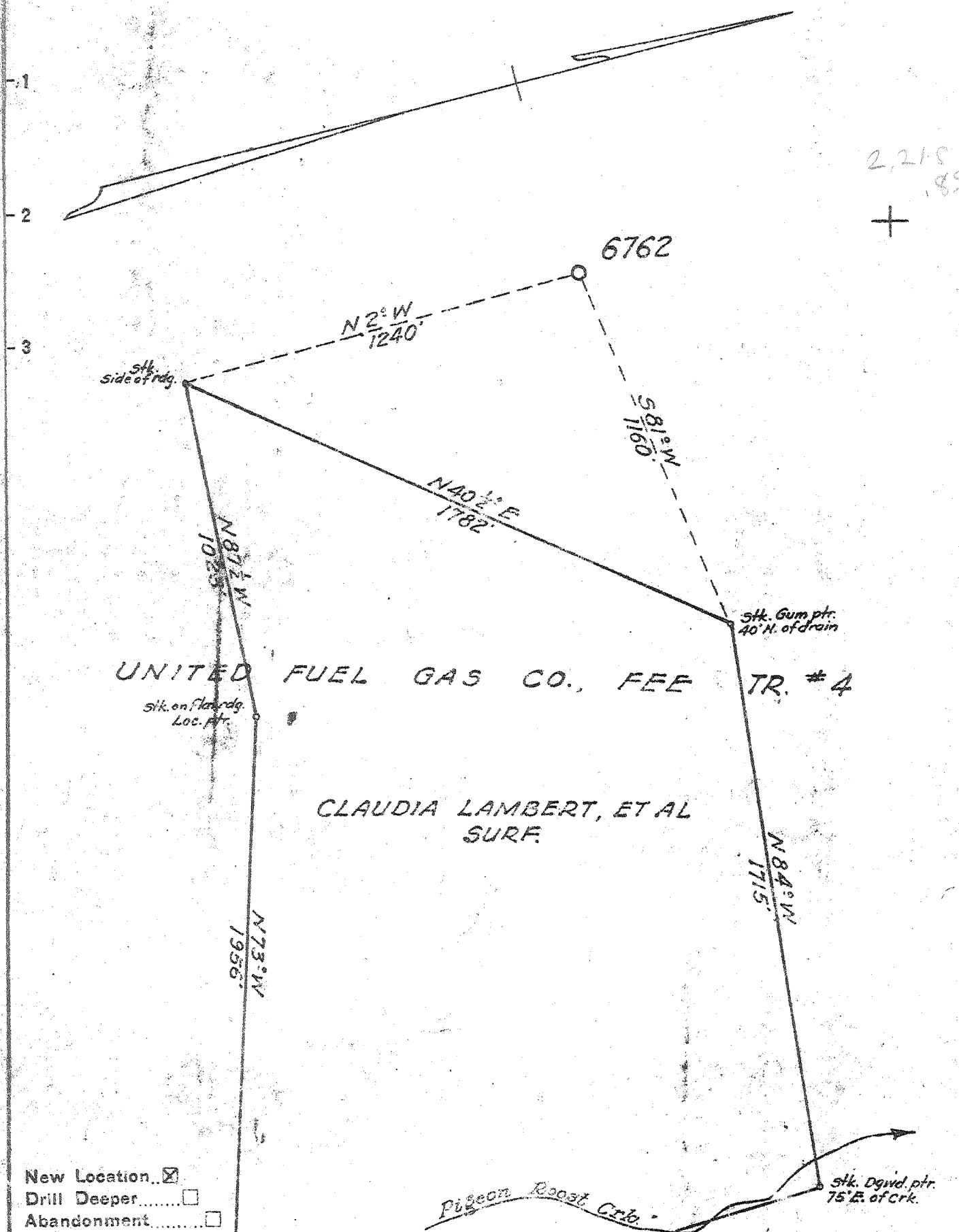


Latitude 38° 05'

Longitude 82° 05'



UNITED FUEL GAS CO., FEE TR. # 4

CLAUDIA LAMBERT, ET AL SURF.

New Location
 Drill Deeper
 Abandonment

Company UNITED FUEL GAS CO.
 Address CHARLESTON, W. VA.
 Farm UNITED FUEL GAS CO. FEE TR # 4
 Tract _____ Acres 897 1/5 Lease No. -
 Well (Farm) No. _____ Serial No. 6762
 Elevation (Spirit Level) 965.64
 Quadrangle MIDKIFF 30
 County LINCOLN District HARTS CREEK
 Engineer [Signature]
 Engineer's Registration No. 662
 File No. 36-37 Drawing No. _____
 Date 5-16-51 Scale 1" = 400'

STATE OF WEST VIRGINIA
 DEPARTMENT OF MINES
 OIL AND GAS DIVISION
 CHARLESTON

WELL LOCATION MAP
 FILE NO. LIN - 997

+ Denotes location of well on United States Topographic Maps, scale 1 to 62,500, latitude and longitude lines being represented by border lines as shown.
 - Denotes one inch spaces on border line of original tracing.

WEST VIRGINIA DEPARTMENT OF MINES
OIL & GAS DIVISION
W E L L R E C O R D

Permit No. LIN-997
Midkiff Quad.

Gas

Company	United Fuel Gas Co.		CASING & TUBING
Address	Box 1273, Charleston 25, W. Va.		
Farm	U.F.G.Co.FeeTr. #4 Acres 8971.75	10	19
Location	Laurel Fk. of Sand Cr.	8	450
Well No.	6762 Elev. 965.64	7	1642
District	Harts Creek County - Lincoln		
Mineral	United Fuel Gas Co.		
Commenced	10/14/51		
Completed	2/9/52		
Date Shot	2/11/52 from 2976 to 4147		
With	3000# Gelatin		
Open Flow	40/10ths Water in 2"		
Volume	267 M		
R.P.	355# 48 hrs.		

Soil	0	10	Berea Sand	2347	2359
Sand	10	50	Slate	2359	2400
Slate	50	65	Shell	2400	2420
Sand	65	75	Slate	2420	3338
Slate	75	90	Brown Shale	3338	3657
Sand	90	110	White Slate	3657	4006
Break	110	320	Brown Shale	4006	4146
Sand	320	460	Black Lime	4146	4147 <i>conif?</i>
Slate	460	500	TOTAL DEPTH	4147'	
Sand	500	545			
Slate	545	640	Water 50'		
Sand	640	695	Water 525'		
Slate	695	760	Show gas 625'		
Gas Sand	760	895	Show gas 880'		
Slate	895	900	Water sand 884'		
Salt Sand	900	1075	Water sand 952'		
Slate	1075	1079	Gas 1738' 3/10 W 2" 73 M blow down to		
Sand	1079	1180	3/10 W 1" 18 M		
Slate	1180	1315	Gas 3045' increased to 13/10 W 1" 38 M		
Sand	1315	1450	Gas 4025, 4080 and 4095' 2/10 W 2" 60M		
Slate	1450	1458			
Lime shells	1458	1468	Test before shot 3/10 W 2" 73 M		
Slate	1468	1508	Shot 2/11/52 with 8000# Gel. 2976-4147		
Red Rock	1508	1516	Test 18 hours after shot 40/10W 2" 267M		
Slate	1516	1526			
Maxon Sand	1526	1545	<u>FINAL OPEN FLOW</u> - 267 M - Big Lime & Shale		
Slate	1545	1562	48 Hr. R.P. 355#		
Lime (Little)	1562	1613			
Pencil Cave	1613	1616			
Big Lime	1616	1779	Shut in 2/12/52 in 7" casing.		
Red Injun	1779	1840			
Slate	1840	1950			
Shells	1950	2045			
Slate	2045	2341			
Brown Shale	2341	2347			