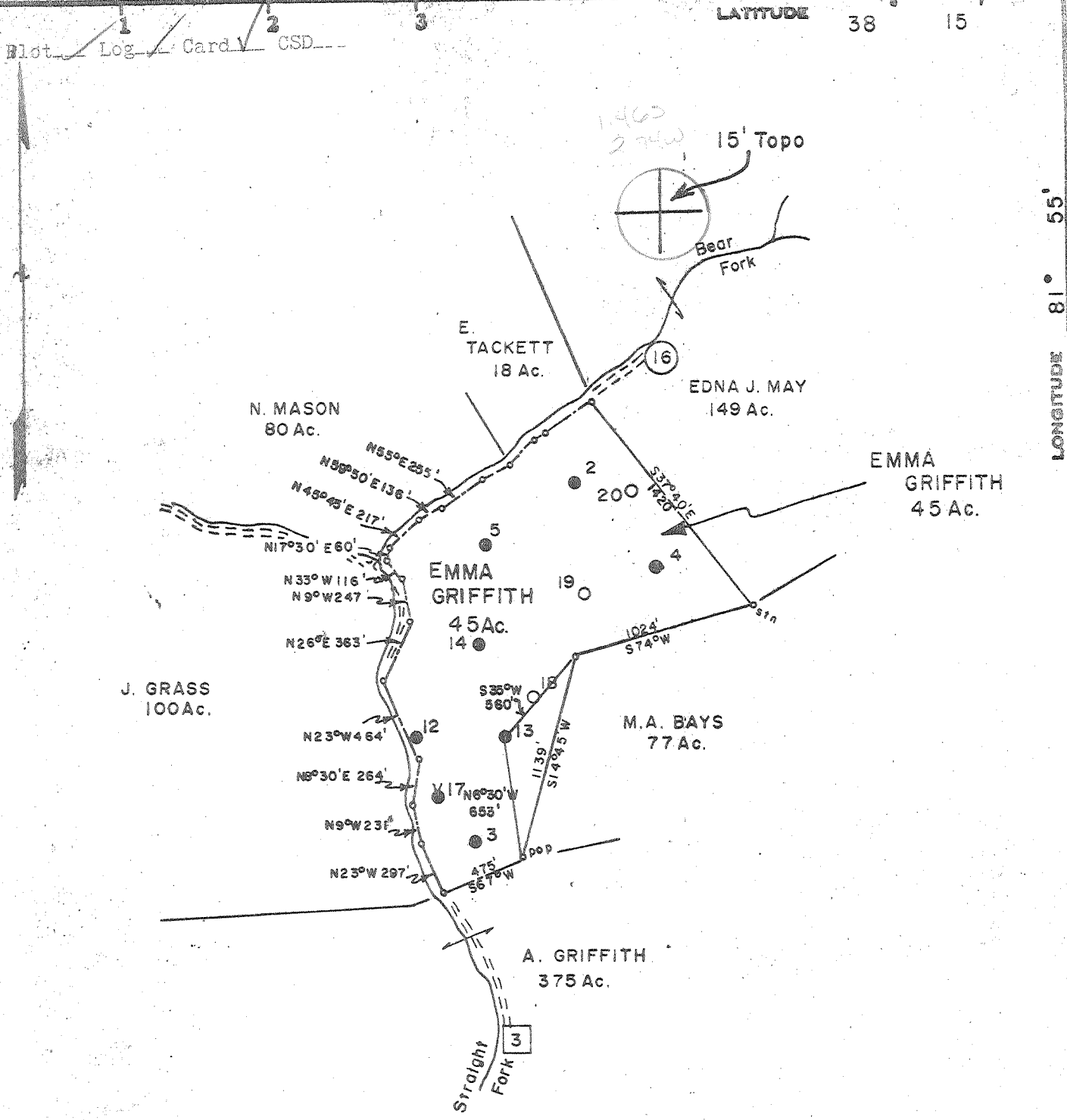


10/6/77



LATITUDE 38 15

LONGITUDE 81° 55'

Minimum Error of Closure 1 in 200

Source of Elevation Pennzoil Co. Records

SURFACE- PENNZOIL CO.

Fracture

New Location

Drill Deeper

Abandonment  Partial, 10/6/77

I, the undersigned, hereby certify that this map is correct to the best of my knowledge and belief and shows all the information required by paragraph 6 of the rules and regulations of the oil and gas section of the mining laws of West Virginia.

Signed: *Curtis A. Lucas*

Map No. 125W Squares: N S 82 E W 77

Company PENNZOIL COMPANY

Address P. O. Box 1588, Parkersburg, W. Va. 26101

Farm EMMA GRIFFITH

Tract        Acres 45 Lease No. 71125-00

Well (Farm) No. 13 Serial No.       

Elevation (Spirit Level) 794.78

Quadrangle MADISON 15' NW

County LINCOLN District DUVAL

Surveyor CURTIS A. LUCAS

Surveyor's Registration No. 275

File No. 889 Drawing No.       

Date Oct. 5, 1977 Scale 1" = 800'

STATE OF WEST VIRGINIA  
DEPARTMENT OF MINES  
OIL AND GAS DIVISION  
CHARLESTON

WELL LOCATION MAP  
FILE NO. LIN-1388-A-PP

+ Denotes location of well on United States Topographic Maps, scale 1 to 62,500, latitude and longitude lines being represented by border lines as shown. OCT 21 1977

- Denotes one inch spaces on border line of original tracing. 47-043

BRUNING 44-131 27198