

Bottom Hole Long. = 81°58' 20.2"

Longitude = 81°58' 20.75"

4,050'

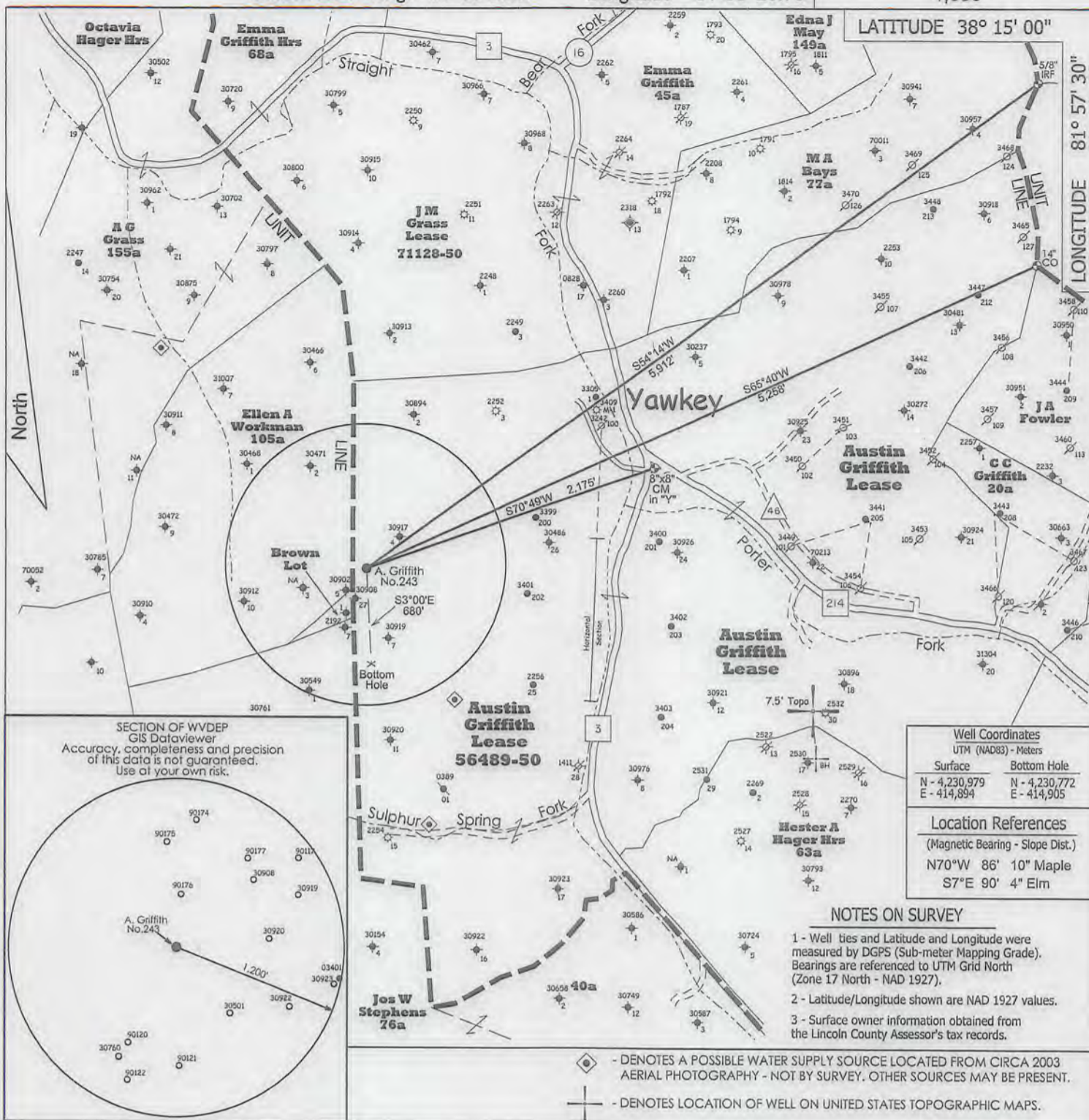
LATITUDE 38° 15' 00"

LONGITUDE 81° 57' 30"

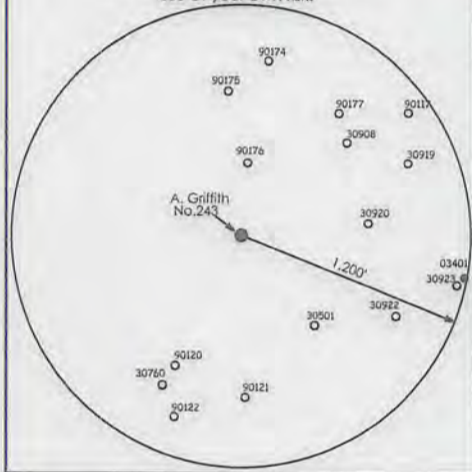
9,950'

Latitude = 38° 13' 21.63"

Bottom Hole Lat. = 38° 13' 14.9"



SECTION OF WYDEP
GIS Dataviewer
Accuracy, completeness and precision
of this data is not guaranteed.
Use at your own risk.



Well Coordinates	
UTM (NAD83) - Meters	
Surface	Bottom Hole
N - 4,230,979	N - 4,230,772
E - 414,894	E - 414,905

Location References	
(Magnetic Bearing - Slope Dist.)	
N70°W 86' 10" Maple	
S7°E 90' 4" Elm	

- NOTES ON SURVEY**
- 1 - Well ties and Latitude and Longitude were measured by DGPS (Sub-meter Mapping Grade). Bearings are referenced to UTM Grid North (Zone 17 North - NAD 1927).
 - 2 - Latitude/Longitude shown are NAD 1927 values.
 - 3 - Surface owner information obtained from the Lincoln County Assessor's tax records.

- ◆ - DENOTES A POSSIBLE WATER SUPPLY SOURCE LOCATED FROM CIRCA 2003 AERIAL PHOTOGRAPHY - NOT BY SURVEY. OTHER SOURCES MAY BE PRESENT.
- ⊕ - DENOTES LOCATION OF WELL ON UNITED STATES TOPOGRAPHIC MAPS.

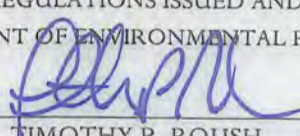
FILE NO. 273

SCALE 1" = 1000'

MINIMUM DEGREE OF ACCURACY Sub-Meter

PROVEN SOURCE OF ELEVATION DGPS Survey
(Sub-Meter Mapping Grade)

I, THE UNDERSIGNED, HEREBY CERTIFY THAT THIS PLAT IS CORRECT TO THE BEST OF MY KNOWLEDGE AND BELIEF AND SHOWS ALL THE INFORMATION REQUIRED BY LAW AND THE REGULATIONS ISSUED AND PRESCRIBED BY THE DEPARTMENT OF ENVIRONMENTAL PROTECTION.

(SIGNED) 

TIMOTHY P. ROUSH PS 793



WEST VIRGINIA
Division of Environmental Protection
Office of Oil and Gas
601 57th Street
Charleston, West Virginia 25301

WELL TYPE: OIL GAS LIQUID INJECTION WASTE DISPOSAL
(IF "GAS") PRODUCTION STORAGE DEEP SHALLOW

LOCATION: ELEVATION 1,050' WATERSHED Straight Fork
DISTRICT Duval COUNTY Lincoln
QUADRANGLE Griffithville 7.5'

SURFACE OWNER Danny & Judy Saul ACREAGE 30 Ac.
OIL & GAS ROYALTY OWNER HG Energy, LLC., et al LEASE ACREAGE 375 Ac.
LEASE NO. 56489-50


PROPOSED WORK: DRILL CONVERT DRILL DEEPER REDRILL FRACTURE OR
STIMULATE PLUG OFF OLD FORMATION PERFORATE NEW
FORMATION OTHER PHYSICAL CHANGE IN WELL (SPECIFY) _____

PLUG AND ABANDON CLEAN OUT AND REPLUG

TARGET FORMATION Berea ESTIMATED DEPTH 3,269 MD

WELL OPERATOR HG Energy LLC. DESIGNATED AGENT Diane White
ADDRESS 5260 DuPont Road ADDRESS 5260 DuPont Road
Parkersburg, WV 26101 Parkersburg, WV 26101

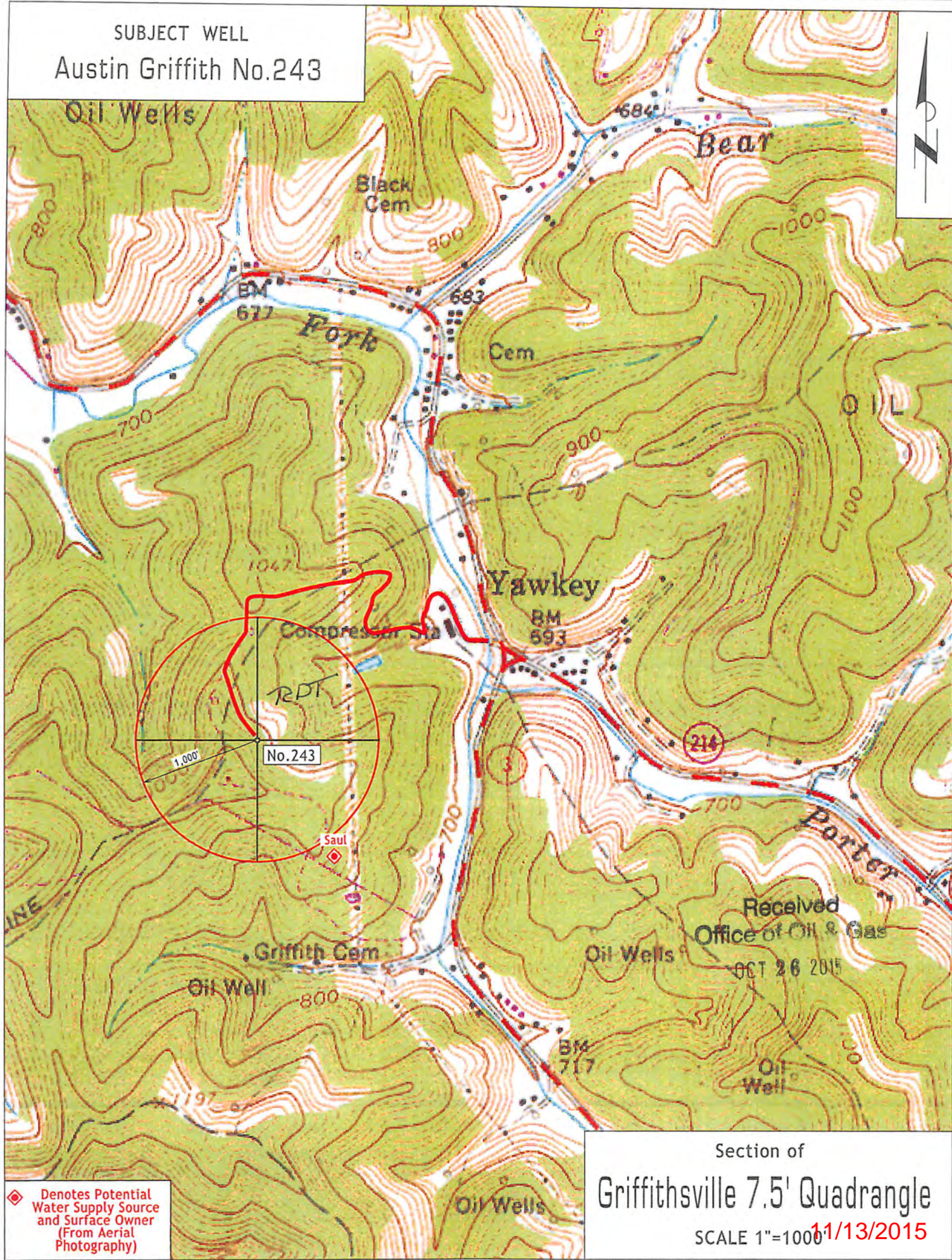
DATE August 26, 2015
FARM Austin Griffith No. 243
API WELL NO. 47 - 043 - 03543



11/13/2015

FORM IV-6

SUBJECT WELL
Austin Griffith No.243



◆ Denotes Potential Water Supply Source and Surface Owner (From Aerial Photography)

Section of
Griffithsville 7.5' Quadrangle
SCALE 1"=1000' 11/13/2015

Received
Office of Oil & Gas
OCT 26 2015