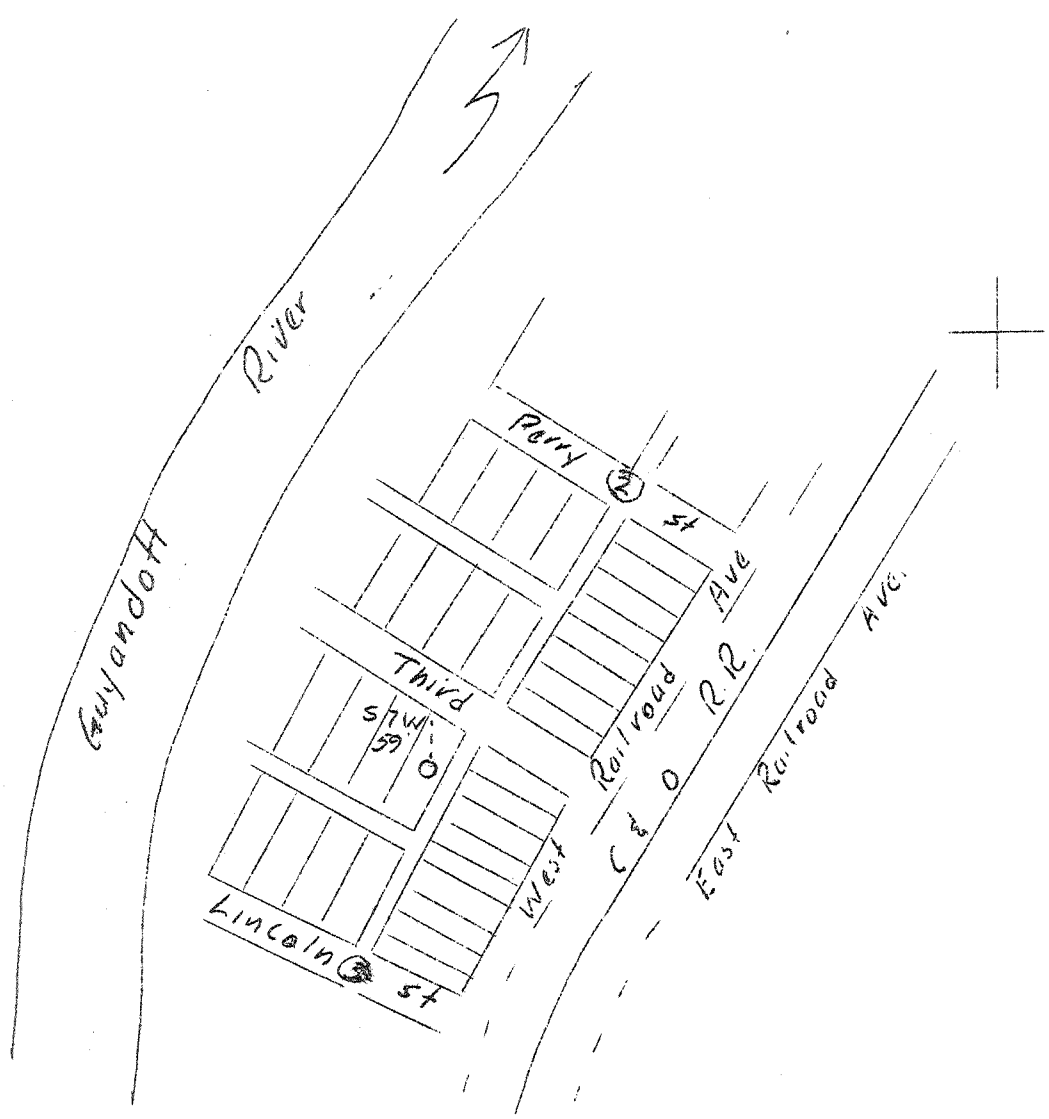


0 1 2 3 LATITUDE 38° 15'

LONGITUDE 82° 10'



1.1476
3.48

Abd.

Company	Basil S. Burgess
Address	Wayne, West Va.
Farm	Lot. No. 35-Block No. 3
Tract	Hubball, W. Va. Lease No. Acres
Well (Farm) No.	Serial No.
Elevation (Spirit Level)	605
Quadrangle	Midkiff (2.50)
County	Lincoln District Sheridan
Engineer	S.V. Haworth
Engineer's Registration No.	224
File No.	Drawing No.
Date	Sept. 28, 1937 Scale 1"=200'

STATE OF WEST VIRGINIA
Department of Mines
OIL AND GAS DIVISION
CHARLESTON

WELL LOCATION MAP
File No. LIN-141A

+ Denotes location of well on United States Topographic Maps, scale 1 to 62,500, latitude and longitude lines being represented by border lines as shown.

— Denotes one inch spaces on border line of original tracing.