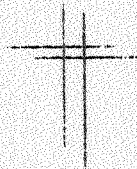


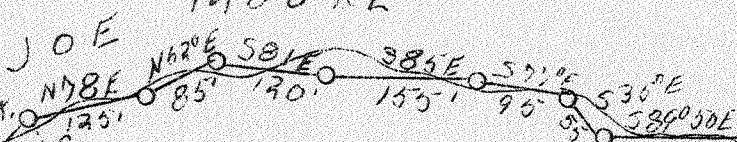
LATITUDE 38° 15'

LONGITUDE 81° 50'

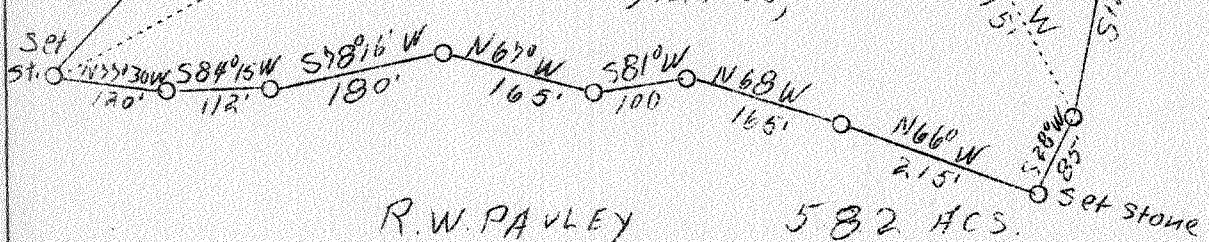
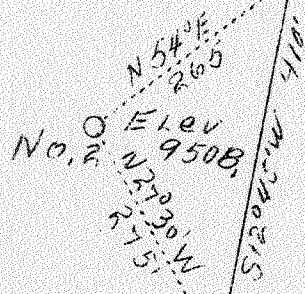


(SOUTH PENN OIL CO.)
LESSEE

JOE MOORE



ELEV 1010 B
NO. 1
CAROLINE PORTER
9.2 ACS,



R.W. PAVLEY 582 ACS.
(SCOPE OIL CO.)
LESSEE

#1	4.06 W
	2.07 P
#2	4.17 W
	2.10 P

ABD.

AUG - 9 1938

COAL NOT MERCHANTABLE

Company Scope Oil Co.,
 Address Charleston, W. Va.
 Farm Caroline Porter
 Acres 9.2
 Well (Farm) No. 1 & 2
 Elevation (S.P.) See map
 Quadrangle Madison
 County Lincoln
 District Washington
 Engineer C. E. Krebs
 Eng. Reg. No. 9
 File No. 11.561
 Date July 25, 1938
 Scale 1" = 200'

NC

STATE OF WEST VIRGINIA
 Department of Mines
 OIL & GAS DIVISION
 Charleston

WELL LOCATION MAP
 File No. LIN-153-A-#1

x Denotes location of well on U. S. Topographic Maps, scale 1 to 62,500, latitude and longitude lines being represented by border lines as shown.

- Denotes one inch spaces on border line of original tracing.

Duval District, Lincoln County, W. Va.

By Scope Oil Co., 405 Dominion Bldg., Charleston, W. Va. 53A

On Buckeye Fork of Cobbs Creek.

Elevation, 1010' B.

Surface owned by C. Porter and minerals by Scope Oil Co.,
Charleston, W. Va.

Drilling commenced May 1, 1917; completed, Aug. 6, 1917.

Shot at 2400-2416'.

10" casing, 10'; 6⁵/₈"⁵/₈", 1726'; 5³/₁₆"⁵/₁₆", 1800'; 2" tubing, 2422'.

Coal was encountered at 455-457 and 785-788'.

Oil well. Abandonment reported to Dept. of Mines July 25, 1938.

Record to ROT from Mrs. Griffith August 12, 1938.

	Top.	Bottom.
Surface	0	25
Slate	25	70
Sand	70	120
Slate	120	200
Sand	200	305
Slate	305	310
Sand	310	348
Slate and shells	348	430
Sand	430	455
Coal	455	457
Slate	457	510
Sand	510	540
Slate and shells	540	675
Sand	675	710
Slate	710	725
Slate	725	785
Coal	785	788
Slate	788	830
Sand	830	850
Slate	850	910
Salt Sand	910	1515
Slate	1515	1520
Lime	1520	1540
Red rock	1540	1545
Slate	1545	1560
Lime	1560	1570
Red rock	1570	1587
Maxton Sand	1587	1630
Slate break	1630	1632
Little Lime	1632	1662
Pencil Cave	1662	1666
Big Lime	1666	1861
Slate	1861	1865
Big Injun Sand	1865	1925
Slate and shells	1925	2320
Brown shale	2320	2400
Berea Grit	2400	2418
Slate	2418	2422
Total depth		2422

Ch. Permit 153A

WEST VIRGINIA DEPARTMENT OF MINES
OIL AND GAS DIVISION

486

WELL RECORD

Permit No.

Oil or Gas Well Oil
(Kind)

Company Scope Oil Company
 Address 495 Dominion Bld., Charleston, W. Va.
 Farm C. Porter Acres ..
 Location (waters) Buckeye Fork-Cobbs Cr.
 Well No. One Elev. 1010-8
 District Duval County Lincoln
 The surface of tract is owned in fee by C. Porter
 Address ..
 Mineral rights are owned by Scope Oil Co.
 Address Charleston
 Drilling commenced May 1, 1917
 Drilling completed AUG. 6, 1917
 Date shot 2400 Depth of shot 2416
 Open Flow /10ths Water in. .. Inch
 /10ths Merc. in. .. Inch
 Volume .. Cu. Ft.
 Rock Pressure .. lbs. .. hrs.
 Oil .. bbls., 1st 24 hrs.
 Fresh water .. feet .. feet
 Salt water .. feet .. feet

Casing and Tubing	Used in Drilling	Left in Well	Packers
Size			
16.			Kind of Packer ..
13.			
10.	<u>10'</u>		Size of ..
8 3/4.			
6 5/8.	<u>1726</u>	<u>1726</u>	Depth set ..
5 3/16.	<u>1800</u>	<u>1800</u>	
3.			Perf. top ..
2.	<u>2422</u>	<u>2422</u>	Perf. bottom ..
Liners Used ..			Perf. top ..
			Perf. bottom ..

CASING CEMENTED .. SIZE .. No. FT. .. Date ..
 COAL WAS ENCOUNTERED AT 455 FEET 24 INCHES
785 FEET 36 INCHES FEET INCHES
 FEET INCHES FEET INCHES

Formation	Color	Hard or Soft	Top	Bottom	Oil Gas or Water	Depth Found	Remarks
Surface			0	25			
Slate			25	70			
Sand			70	120			
Slate			120	200			
Sand			200	305			
Slate			305	310			
Sand			310	348			
Slate & Shells			348	430			
Sand			430	455			
Coal			455	457			
Slate			457	510			
Sand			510	540			
Slate & Shells			540	675			
Sand			675	710			
Slate			710	725			
Slate			725	785			
Coal			785	788			
Slate			788	830			
Sand			830	850			
Slate			850	910			
Salt Sand			910	1515			
Slate			1515	1520			
Lime			1520	1540			
Red Rock			1540	1545			
Slate			1545	1560			
Lime			1560	1570			
Red Rock			1570	1587			
Saxon Sand			1587	1630			
Slate Brake			1630	1632			
Little Lime			1632	1662			
Pencil Cave			1662	1666			
Big Lime			1666	1861			
Slate			1861	1865			
Big Injun			1865	1925			
Slate & Shells			1925	2320			
Brown Shale			2320	2400			
Berea Grit			2400	2418			
Slate			2418	2422			
Total Depth				2422			

