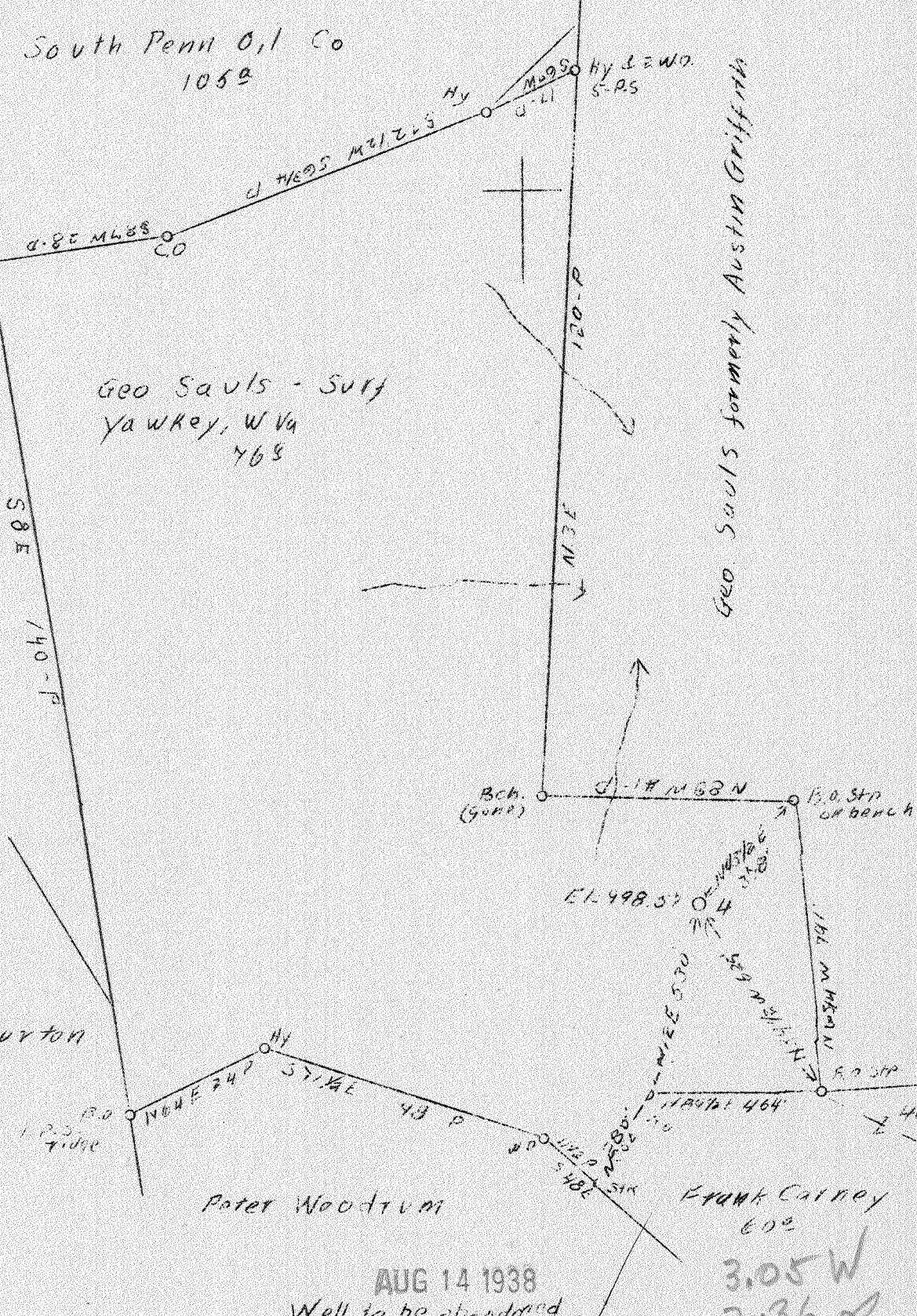


LATITUDE 38° 15'

LONGITUDE 81° 55'

South Penn Oil Co  
1059

60' W  
OF F.R. 120' W  
C.W. SEZ MOY  
HVS.



AUG 14 1938  
Well to be abandoned

3.05 W  
2.36 S

Company	South Penn Oil Co.
Address	411-7th Ave., Pittsburgh, Pa,
Farm	J. I. Stephens Lower tract
Acres	221
Lease No.	71117
Well (Farm) No.	4
Quadrangle	Madison
County	Lincoln
District	Duval
Engineer	E. C. Tabler
Eng. Reg. No.	-
Date	August 3, 1938
Scale	1" = 400'

NW

STATE OF WEST VIRGINIA  
Department of Mines  
OIL & GAS DIVISION  
Charleston

WELL LOCATION MAP

File No. LIN-154-A

x Denotes location of well on U. S. Topographic Maps, scale 1 to 2,500, latitude and longitude lines being represented by border lines as shown.

- Denotes one inch spaces or border line of original tracing.

154A

Duval District, Lincoln County, W. Va.

By South Penn Oil Co., 411 Seventh Ave., Pittsburgh, Pa.

On 22 $\frac{1}{2}$  acres, on Straight Fork.

Elevation, 998.57' L.

Surface owned by Geo. Sauls, Yawkey, W. Va., and minerals by

J. R. Saul et al., R. D. No. 1, Clark Lane, Charleston, W. Va.

Drilling commenced Nov. 30, 1908; completed, Feb. 8, 1909.

Shot Feb. 14, 1909, with 90 qts.; shot Sept. 13, 1917, with 80 qts.

Oil, 30 bbls., 1st 24 hours.

Salt water at 1145 and 1170'.

6 $\frac{3}{8}$ " casing, 1790'.

Coal? was encountered at 565-570'.

Oil well. Abandonment reported to Dept. of Mines Aug. 5, 1938.

Record to ROT from Mrs. Griffith August 12, 1938.

	Top.	Bottom.
Surface	0	8
Slate	8	60
Red rock	60	85
Slate	85	565
Coal	565	570
Sand	570	635
Sand	635	670
Slate	670	675
Sand	675	720
Slate and shell	720	800
Black slate	800	820
Sand	820	845
Slate	845	950
Sand	950	1045
Slate	1045	1065
Lime	1065	1090
Salt Sand	1090	1705
Red rock	1705	1710
Black slate	1710	1750
Black lime	1750	1785
Pencil Cave	1785	1790
White lime (Big Lime?)	1790	1980
Big Injuh Sand	1980	2040
Slate	2040	2100
Berea shells	2100	2254
Slate	2254	2448
Black shale	2448	2468
Berea Grit Sand	2468	2489
Slate	2489	2493
Total depth		2493

WEST VIRGINIA DEPARTMENT OF MINES  
OIL AND GAS DIVISION

487

WELL RECORD

Permit No. ....

Oil or Gas Well OIL  
(Kind)

Company SOUTH PENN OIL COMPANY.  
Address 411 Seventh Ave., Pittsburgh, Pa.  
Farm J. W. Stephens Lower Tract, 221  
Location (waters) Straight Fork  
Well No. 4 Elev. 998.57'  
District Duval County Lincoln  
The surface of tract is owned in fee by Geo. Sauls  
Yawkey, Address W. Va.  
Mineral rights are owned by J.R. Saul et al  
RD #1 Clark Lane Address Charleston, W. Va.  
Drilling commenced Nov. 30, 1908  
Drilling completed Feb. 8, 1909.  
Date shot 2-14-09-90 ft.  
9-13-17 80 ft. Depth of shot --  
Open Flow /10ths Water in - Inch  
/10ths Merc. in - Inch  
Volume - Cu. Ft.  
Rock Pressure - lbs. - hrs.  
Oil 30 bbls., 1st 24 hrs.  
Fresh water - feet - feet  
Salt water 1145 feet 1170 feet

Casing and Tubing	Used in Drilling	Left in Well	Packers
Size			
16			Kind of Packer <u>-</u>
13			
10			Size of <u>-</u>
8 1/4			
6 5/8	<u>1790'</u>		Depth set <u>-</u>
5 3/16			
3			Perf. top <u>-</u>
2			Perf. bottom <u>-</u>
Liners Used			Perf. top <u>-</u>
			Perf. bottom <u>-</u>

CASING CEMENTED - SIZE - No. FT. - Date -  
(7)  
COAL WAS ENCOUNTERED AT 565 FEET 60 INCHES  
- FEET - INCHES - FEET - INCHES  
- FEET - INCHES - FEET - INCHES

Formation	Color	Hard or Soft	Top	Bottom	Oil Gas or Water	Depth Found	Remarks
Surface				8			
Slate			8	60			
Red Rock			60	85			
Slate			85	565			
Coal			565	570			
Sand			570	635			
Sand			635	670			
Slate			670	675			
Sand			675	720			
Slate & Shell			720	800			
Black Slate			800	820			
Sand			820	845			
Slate			845	950			
Sand			950	1045			
Slate			1045	1065			
Lime			1065	1090			
Salt Sand			1090	1705			
Red Rock			1705	1710			
Black Slate			1710	1750			
Black Lime			1750	1785			
Pencil Cave			1785	1790			
White Lime (Big?)			1790	1980			
Big Injun Sand			1980	2040			
Slate			2040	2100			
Berea Shells			2100	2254			
Slate			2254	2448			
Black Shale			2448	2468			
Berea Grit Sand			2468	2489			
Slate			2489	2493			
Total Depth				2493			

