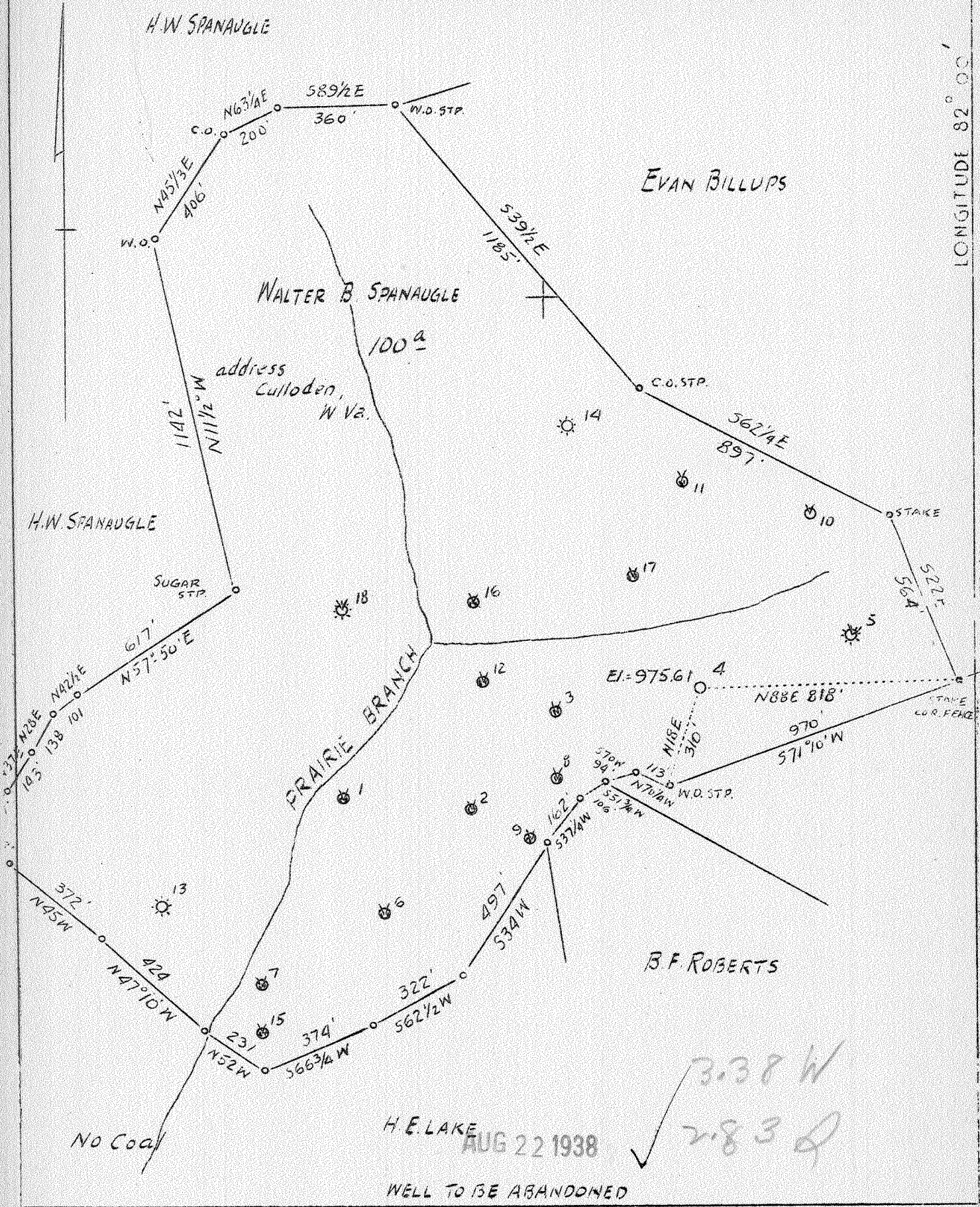


LATITUDE 38° 20'

LONGITUDE 82° 00'



Company	South Penn Oil Co.,
Address	411-7th Ave., Pittsburgh, Pa.
Farm	Walter Spanauble
Acres	100
Lease No.	58125
Well (Farm) No.	4
Elevation	-
Quadrangle	Milton
District	Carroll
County	Lincoln
Engineer	E. C. Tabler
Eng. Reg. No.	-
Date	August 15, 1938
Scale	1" = 400'

STATE OF WEST VIRGINIA  
 Department of Mines  
 OIL & GAS DIVISION  
 Charleston

WELL LOCATION MAP  
 File No. LIN-155A

x Denotes location of well on U. S. Topographic Maps, scale 1 to 62,500, latitude and longitude lines being represented by border lines as shown.

- Denotes one inch spaces on border line of original tracing.

155A

Carroll District, Lincoln County, W. Va.

By South Penn Oil Co., 411 Seventh Ave., Pittsburgh, Pa.

On 100 acres, on Mud River.

Elevation, 975.61' L.

Surface owned by Walter B. Sponaugle, 1108 Waters Ave.,

Sulphur Springs, Florida, and minerals by C. N. Hall et al.,  
Hamlin, W. Va.

Drilling commenced March 4, 1919; completed, March 20, 1919.

Shot March 24, 1919, in Salt Sand.

Oil, 5 bbls., 1st 24 hrs.

Fresh water ? 685'.

8½" casing, 196'; 6½", 747'; Conductor, 16'.

Oil well. Abandonment reported to Dept. of Mines Aug. 17, 1938.

Record to RGT from Mrs. Griffith Sept. 22, 1938.

	Top.	Bottom.
Clay	0 -	16
Slate	16 -	70
Sand	70 -	85
Lime	85 -	95
Slate	95 -	120
Red rock	120 -	125
Slate	125 -	150
Sand	150 -	165
Slate	165 -	190
Lime	190 -	200
Slate and shells	200 -	325
Sand	325 -	380
Slate and shells	380 -	450
Sand	450 -	540
Slate	540 -	547
Sand	547 -	620
Slate	620 -	675
Sand (water, 685')	675 -	740
Lime	740 -	767
Slate and shells	767 -	905
Sand	905 -	920
Slate	920 -	995
Sand	995 -	1010
Slate and shells	1010 -	1067
Total depth (shown on field work order)		1084

WEST VIRGINIA DEPARTMENT OF MINES  
OIL AND GAS DIVISION

496

WELL RECORD

Permit No. 155-A

Oil or Gas Well OIL  
(Kind)

Company SOUTH PENN OIL COMPANY  
 Address 411 Seventh Ave., Pittsburgh, Pa.  
 Farm Walter Sponaugle Acres 100  
 Location (waters) Mud River  
 Well No. 4 Elev. 975.61'  
 District Carroll County Lincoln  
 The surface of tract is owned in fee by Walter B. Sponaugle  
 108 Waters Ave., Address Sulphur Spgs. Fla.  
 Mineral rights are owned by C. N. Hall et al  
 Address Hamlin, W. Va.  
 Drilling commenced March 4, 1919  
 Drilling completed March 20, 1919  
 Date shot March 24, 1919 Depth of shot Salt Sand  
 Open Flow /10ths Water in - Inch  
 /10ths Merc. in - Inch  
 Volume - Cu. Ft.  
 Rock Pressure - lbs. - hrs.  
 Oil 5 Bbl bbls., 1st 24 hrs.  
 Fresh water ? 685' feet - feet  
 Salt water - feet - feet

Casing and Tubing	Used in Drilling	Left in Well	Packers
Size			
16			Kind of Packer -
13			-
10			Size of -
8 1/4	196		-
6 5/8	747		Depth set -
5 3/16			-
3			Perf. top -
2			Perf. bottom -
Liners Used			Perf. top -
Cond. 16			Perf. bottom -

CASING CEMENTED - SIZE - No. FT. - Date  
 COAL WAS ENCOUNTERED AT - FEET - INCHES  
 - FEET - INCHES - FEET - INCHES  
 - FEET - INCHES - FEET - INCHES

Formation	Color	Hard or Soft	Top	Bottom	Oil Gas or Water	Depth Found	Remarks
Clay				16			
Slate			16	70			
Sand			70	85			
Lime			85	95			
Slate			95	120			
Red Rock			120	125			
Slate			125	150			
Sand			150	165			
Slate			165	190			
Lime			190	200			
Slate & Shells			200	325			
Sand			325	380			
Slate & Shells			380	450			
Sand			450	540			
Slate			540	547			
Sand			547	620			
Slate			620	675			
Sand			675	740			
Lime			740	767	Water	685	
Slate & Shells			767	905			
Sand			905	920			
Slate			920	995			
Sand			995	1010			
Slate & Shells			1010	1067			
Total Depth				1084			(Shown on field work order)

