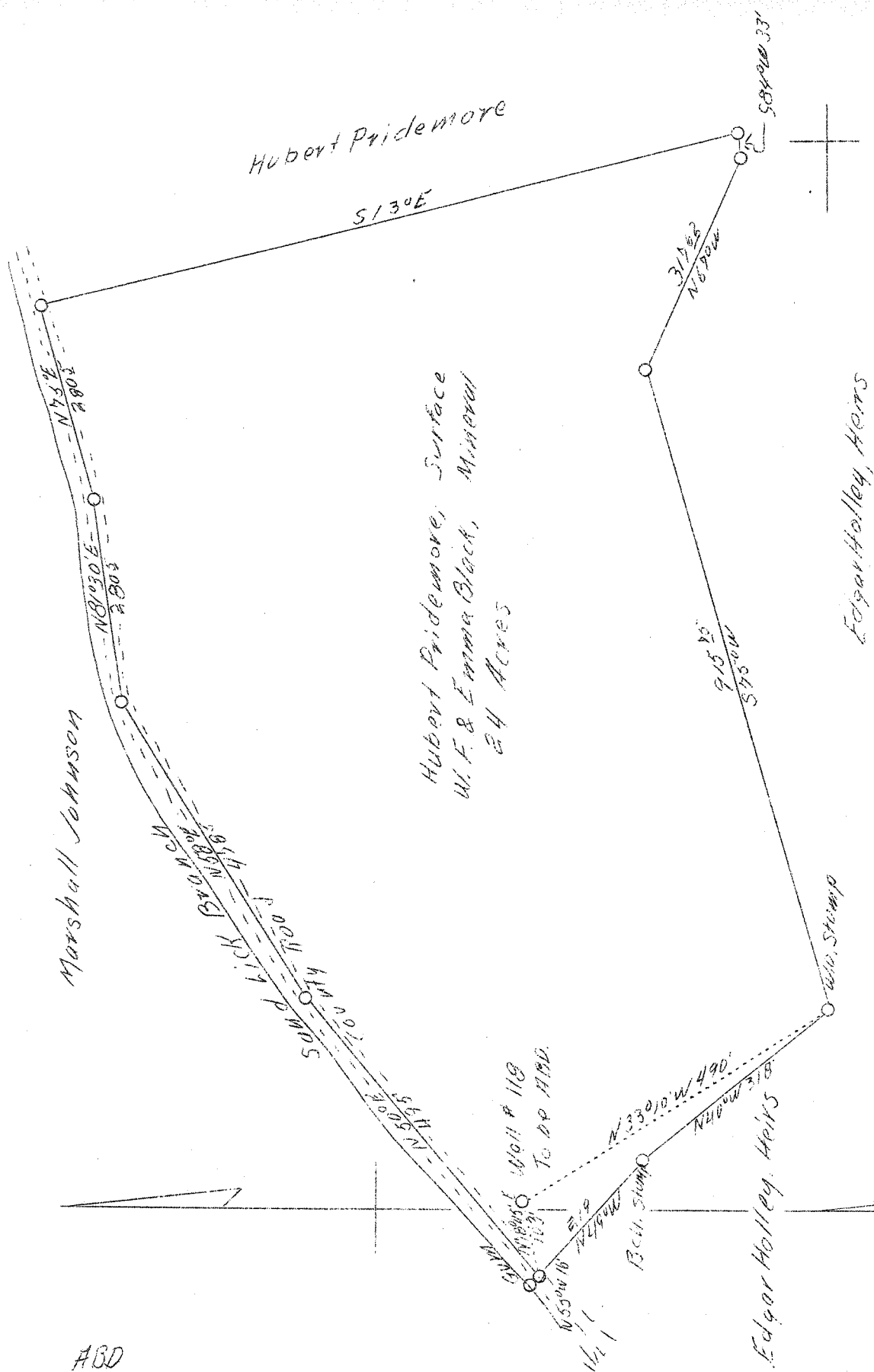


LATITUDE 38° 15'

LONGITUDE 82° 05'



ABD

Company	Kanawha Gas & Utilities Co.
Address	Hamlin, W. Va.
Farm	Hubert Pridemore
Tract	One
Acres	24
Well (Farm) No.	One
Serial No.	118
Elevation (SP)	690
Quadrangle	Midkiff
County	Lincoln
District	Carroll
Engineer	G. C. Ewing
Eng. Reg. No.	309
Date	Sept. 14, 1938
Scale	1" = 200'

STATE OF WEST VIRGINIA
 Department of Mines
 OIL & GAS DIVISION
 Charleston

WELL LOCATION MAP

File No. LIN-167-A

x Denotes location of well on U. S. Topographic Maps, scale 1 to 62,500, latitude and longitude lines being represented by border lines as shown.

- Denotes one inch spaces on border line of original tracing.