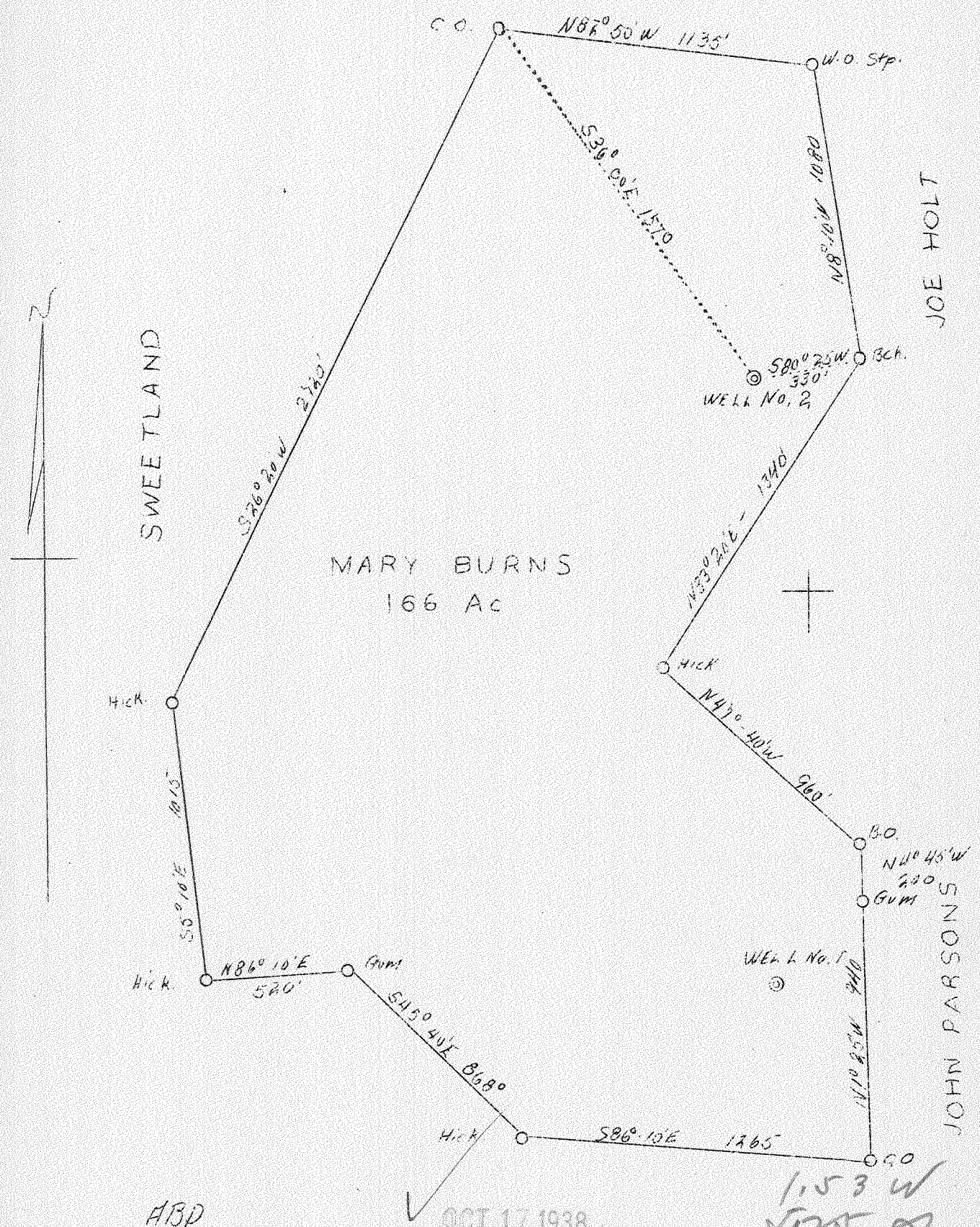


LATITUDE 38° 20'

LONGITUDE 82° 00'



Company	Sweetland Land & Mineral Co.
Address	Hamlin, W. Va.
Farm	Mary Burns
Tract	One
Acres	166
Well (Farm) No.	Two
Elevation (SP)	780
Quadrangle	Milton
County	Lincoln
District	Carroll
Engineer	S. V. Haworth
Eng. Reg. No.	224
Date	Sept. 26, 1938
Scale	1" = 500'

STATE OF WEST VIRGINIA  
 Department of Mines  
 OIL & GAS DIVISION  
 Charleston

WELL LOCATION MAP

File No. LIN-169-A

x Denotes location of well on U. S. Topographic Maps, scale 1 to 62,500, latitude and longitude lines being represented by border lines as shown.

- Denotes one inch spaces on border line of original tracing.