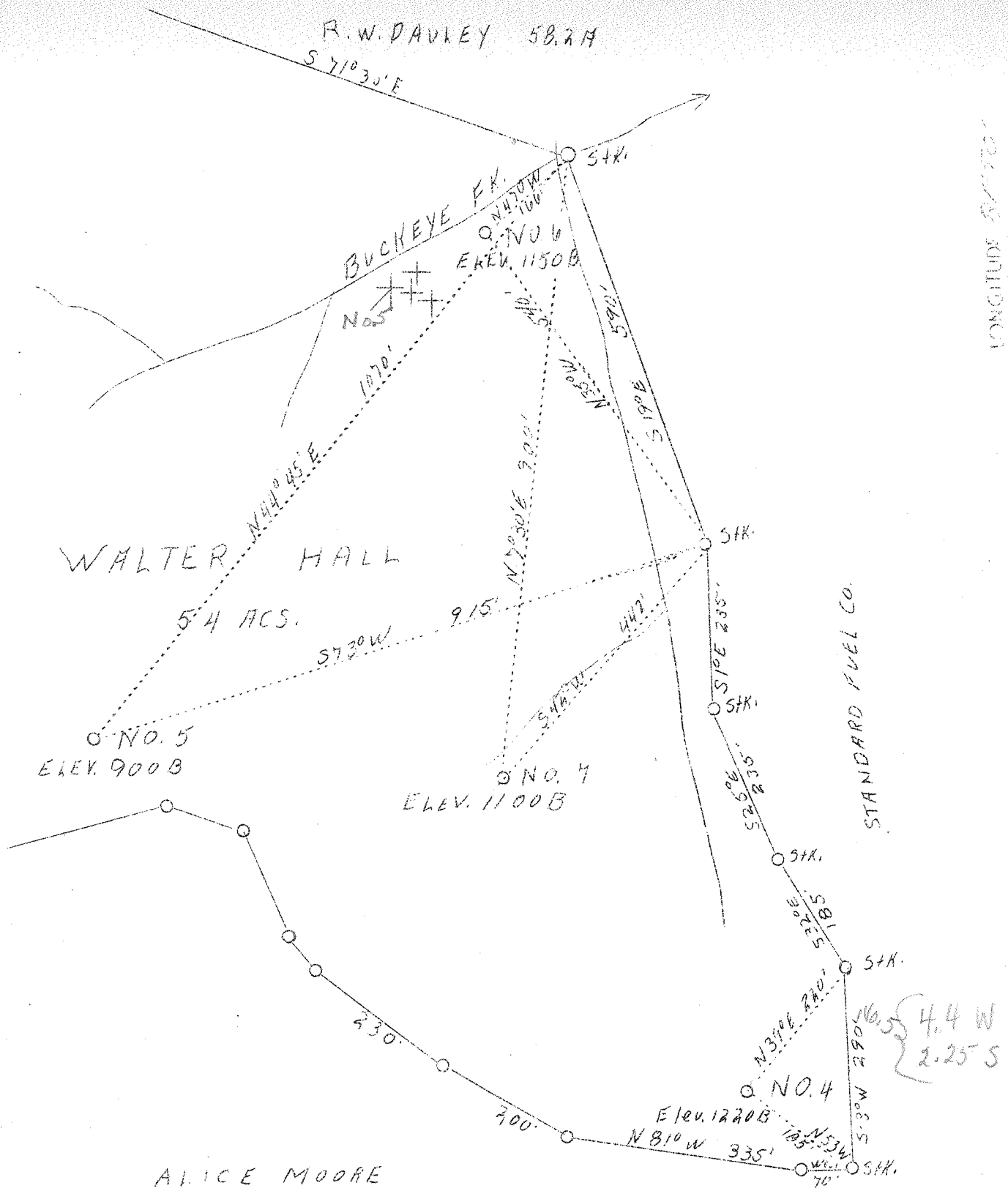


LATITUDE 38° 15'



ABD. # 5

Company	Scope Oil Co.	STATE OF WEST VIRGINIA Department of Mines OIL & GAS DIVISION Charleston
Address	Charleston, W. Va.	
Farm	Walter Hall	
Tract	54.0	
Well (Fam) No.	3-4-5-6-7	
Elevation (SP)	See Above	
Quadrangle	Madison N.C.	
County	Lincoln	
District	Washington	
Engineer	C. E. Krebs	
Eng. Reg. No.	9	WELL LOCATION MAP File No. <u>Lin-177-A</u>
File No.	11.503	
Date	1-27-38	
Scale	1" = 200'	
		- Denotes one inch spaces on border line of original tracing.