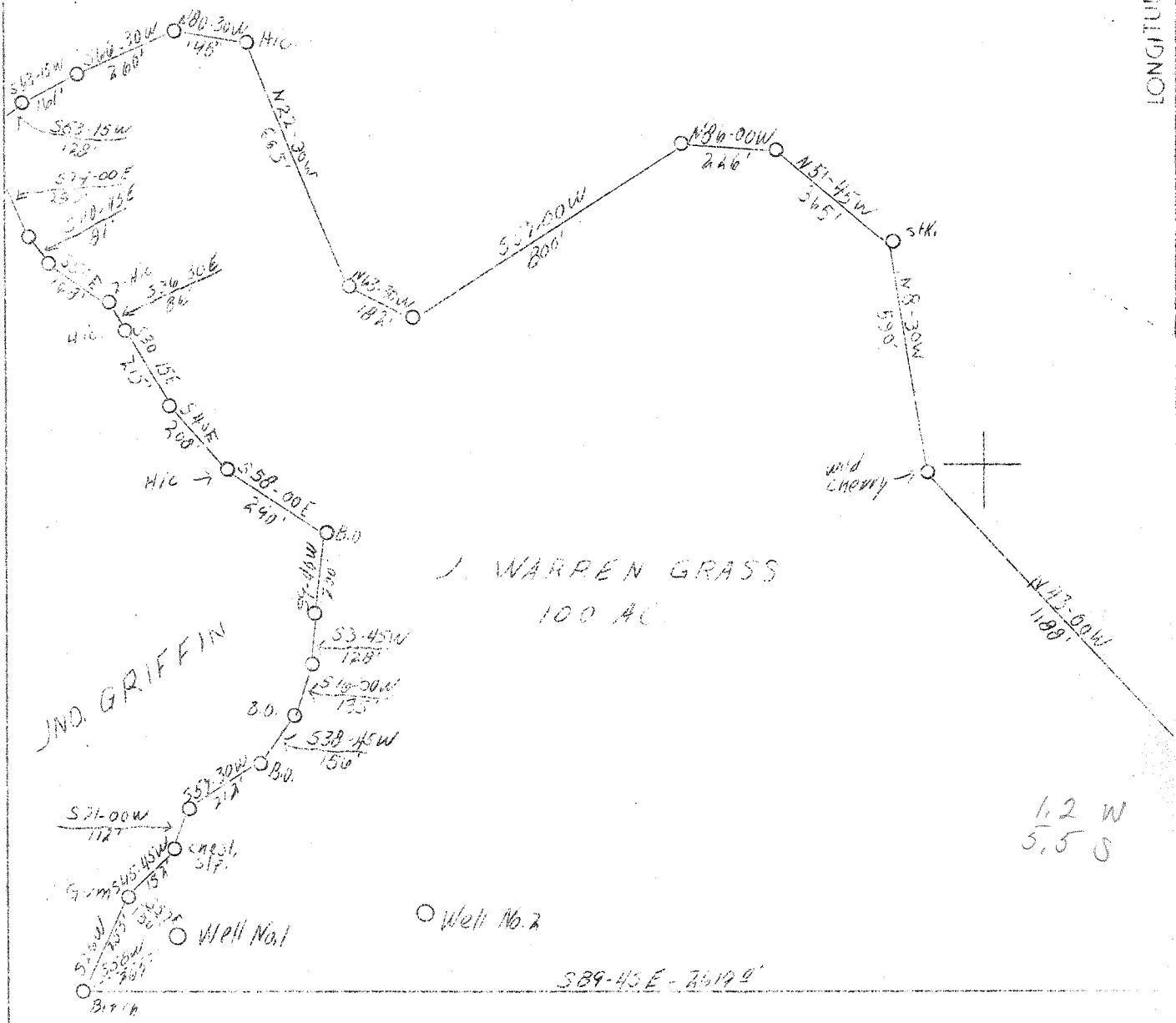


LATITUDE 38° 25'

LONGITUDE 82° 05'

WARREN GRASS



J. WARREN GRASS
100 AC.

JND. GRIFFIN

S89-43E - 2519.9

DAVID PORTER

AED.

Company	Transylvania Petroleum Co.	STATE OF WEST VIRGINIA
Address	Huntington, W. Va.	Department of Mines
Farm	J. Warren Grass	OIL & GAS DIVISION
Acres	100	Charleston
Well (Farm) No.	One	WELL LOCATION MAP
Elevation (SP)	835	File No. <u>L11-181-A</u>
Quadrangle	Milton	x Denotes location of well on U. S. Topographic Maps, scale 1 to 62,500, latitude and longitude lines being represented by border lines as shown.
County	Lincoln	- Denotes one inch spaces on border line of original tracing.
District	Carroll	
Engineer	S. V. Haworth	
Eng. Reg. No.	224	
Date	Nov. 5, 1938	
Scale	1" - 400'	