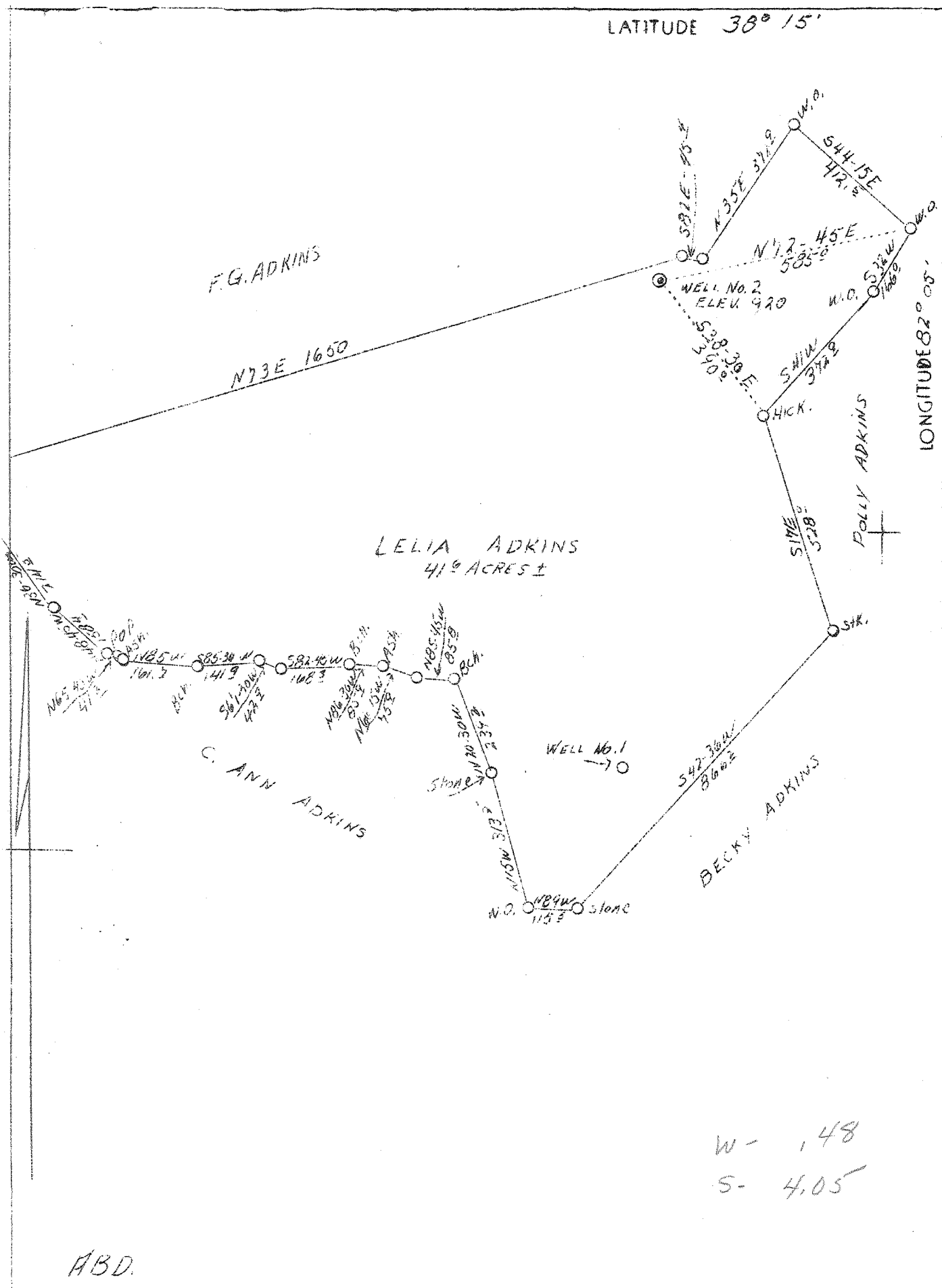


LATITUDE 38° 15'

LONGITUDE 82° 05'



W - 1.48
S - 4.05

ABD.

Company	Kanawha Gas & Utilities Co.	STATE OF WEST VIRGINIA Department of Mines OIL AND GAS DIVISION Charleston WELL LOCATION MAP File No. <u>187-4</u> x Denotes location of well on U.S. Topographic Maps, scale 1 to 62,500, latitude and longitude lines being represented by border lines as shown. - Denotes one inch spaces on border line of original tracing.
Address	Hamlin, W.Va.	
Lelia Adkins Farm		
Tract	1	
Acres	41.6	
Well (Farm) No.	2	
El. (Spirit Level)	920	
Quadrangle	Midkiff NC.	
County	Lincoln	
District	Union	
Eng.	S.V. Haworth	
Eng. Reg. No.	224	
Date	12/2/38	
Scale	1" - 100'	