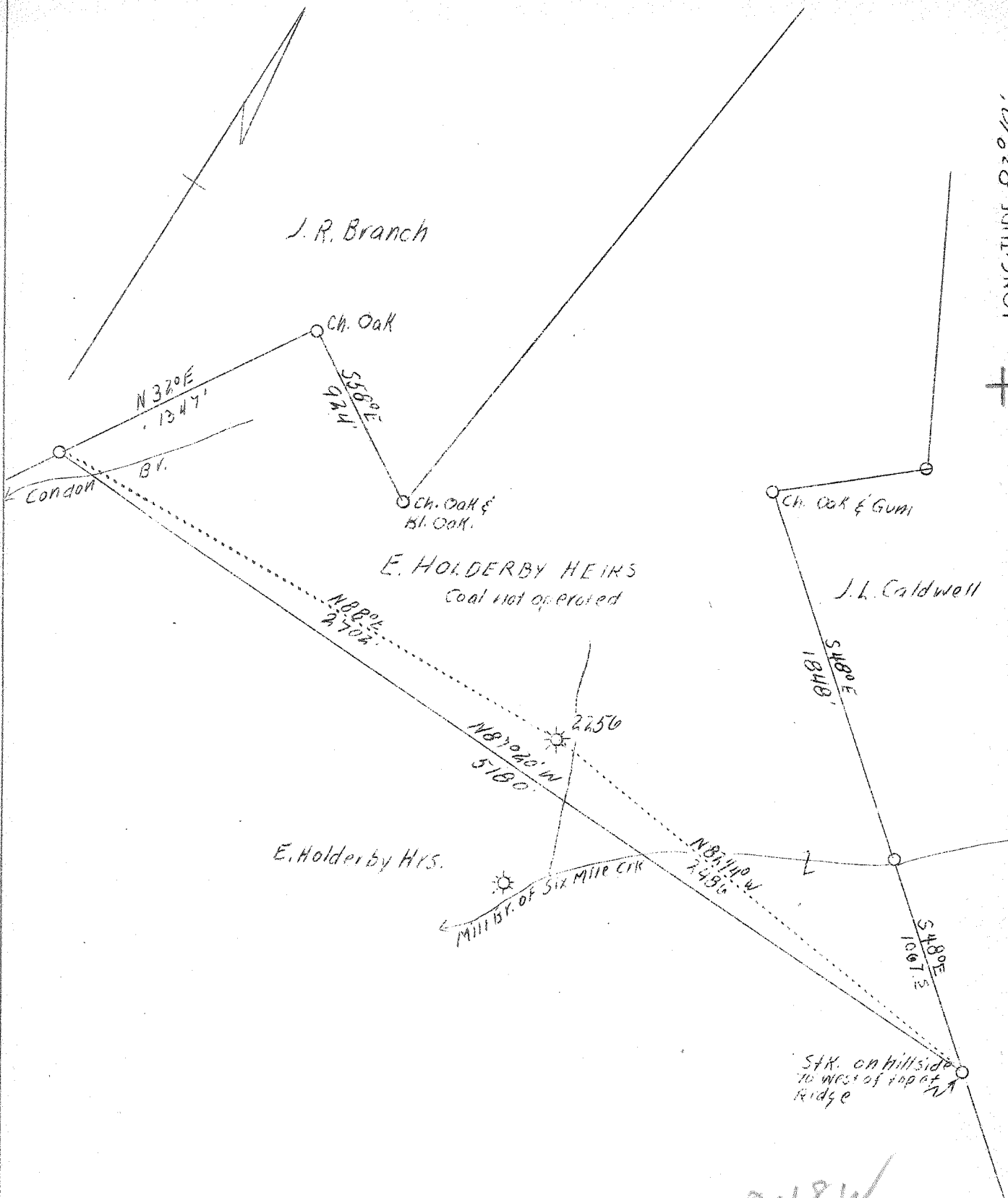


LATITUDE 38° 15'

LONGITUDE 82° 10'



ABD.



APR 10 1939

0.18W  
3.189

NW

Company United Fuel Gas Co.  
 Address Charleston, W.Va.  
 Farm E. Holderby Heirs  
 Acres 375  
 Lease No. 24624  
 Serial No. 2256  
 FILE (Sp. L) 700.5  
 Quadrangle Midkiff  
 County Lincoln  
 District Sheridan  
 Eng. G.A. Cunningham  
 Eng. Reg. No. 659  
 File No. 32 - 49  
 Date 4/5/39  
 Scale 1" = 660'

STATE OF WEST VIRGINIA  
 Department of Mines  
 OIL AND GAS DIVISION  
 Charleston

WELL LOCATION MAP

File No. lin-190-A

x Denotes location of well on U.S. Topographic Maps, scale 1 to 62,500, latitude and longitude lines being represented by border lines as shown.

- Denotes one inch spaces on border line of original tracing.

STATE OF WEST VIRGINIA  
DEPARTMENT OF MINES  
OIL AND GAS DIVISION

52

WELL RECORD

Permit No. 190-A

Oil or Gas Well GAS  
(Kind)

Company United Fuel Gas Company  
Address Charleston, W. Va.  
Farm E. Holderby Hrs. Acres 375  
Location (waters) Mile Br. of Six Mile Creek  
Well No. 2256 Elev. 700.5  
District Sheridan County Lincoln  
The surface of tract is owned in fee by E. Holderby Hrs.  
Address Huntington, W. Va.  
Mineral rights are owned by Same  
Address \_\_\_\_\_  
Drilling commenced October 15, 1915  
Drilling completed November 16, 1915  
Date shot Nov. 17, 1915 Depth of shot 1344  
Open Flow 14 /10ths Water in \_\_\_\_\_ Inch  
After shot 2 /10ths Merc. in \_\_\_\_\_ Inch  
Volume 582,000 Cu. Ft.  
Rock Pressure 360 lbs. 48 hrs.  
Oil \_\_\_\_\_ bbls., 1st 24 hrs.  
Fresh water 20 feet \_\_\_\_\_ feet  
Salt water 570 feet \_\_\_\_\_ feet

Casing and Tubing	Used in Drilling	Left in Well	Packers
Size			Kind of Packer
16			<u>None used</u>
13			Size of <u>after</u>
10			<u>deeper drilling</u>
8 1/4	<u>1261</u>	<u>1261</u>	Depth set
6 5/8			Perf. top
5 3/16			Perf. bottom
3			Perf. top
2			Perf. bottom
Liners Used			

CASING CEMENTED \_\_\_\_\_ SIZE \_\_\_\_\_ No. FT. \_\_\_\_\_ Date \_\_\_\_\_  
COAL WAS ENCOUNTERED AT 45 FEET 60 INCHES  
\_\_\_\_\_ FEET \_\_\_\_\_ INCHES 890 FEET 24 INCHES  
\_\_\_\_\_ FEET \_\_\_\_\_ INCHES \_\_\_\_\_ FEET \_\_\_\_\_ INCHES

Formation	Color	Hard or Soft	Top	Bottom	Oil Gas or Water	Depth Found	Remarks
Mud			0	14			
Sand			14	45			
Coal			45	50			
Slate			50	80			
Sand			80	190			
Slate			190	400			
Sand			400	430			
Slate			430	500			
1st Salt Sand			500	700			
Slate			700	790			
2nd Salt Sand			790	870			
Slate			870	890			
Coal			890	892			
Slate			892	910			
Lime			910	925			
Marion			925	950			
Slate			950	970			
Red Rock			970	980			
Lime			980	1000			
Blue Mud			1000	1060			
Slate			1060	1075			
Little Lime			1075	1098			
Pencil Cave			1098	1100			
Big Lime			1100	1304			
Red Rock			1304	1330			
Big Injun			1330	1365			
Slate			1365	1414			
Total Depth			1414				
Well drilled deeper - Commenced April 18, 1928							
- Completed May 4, 1928							
Started in Big Lime				1330			
Big Lime			1330	1365			
Slate & Shells			1365	1874			
Berea			1874	1886			
Total Depth			1927				
Shot 5/7/28 at 1874 to 1886							

