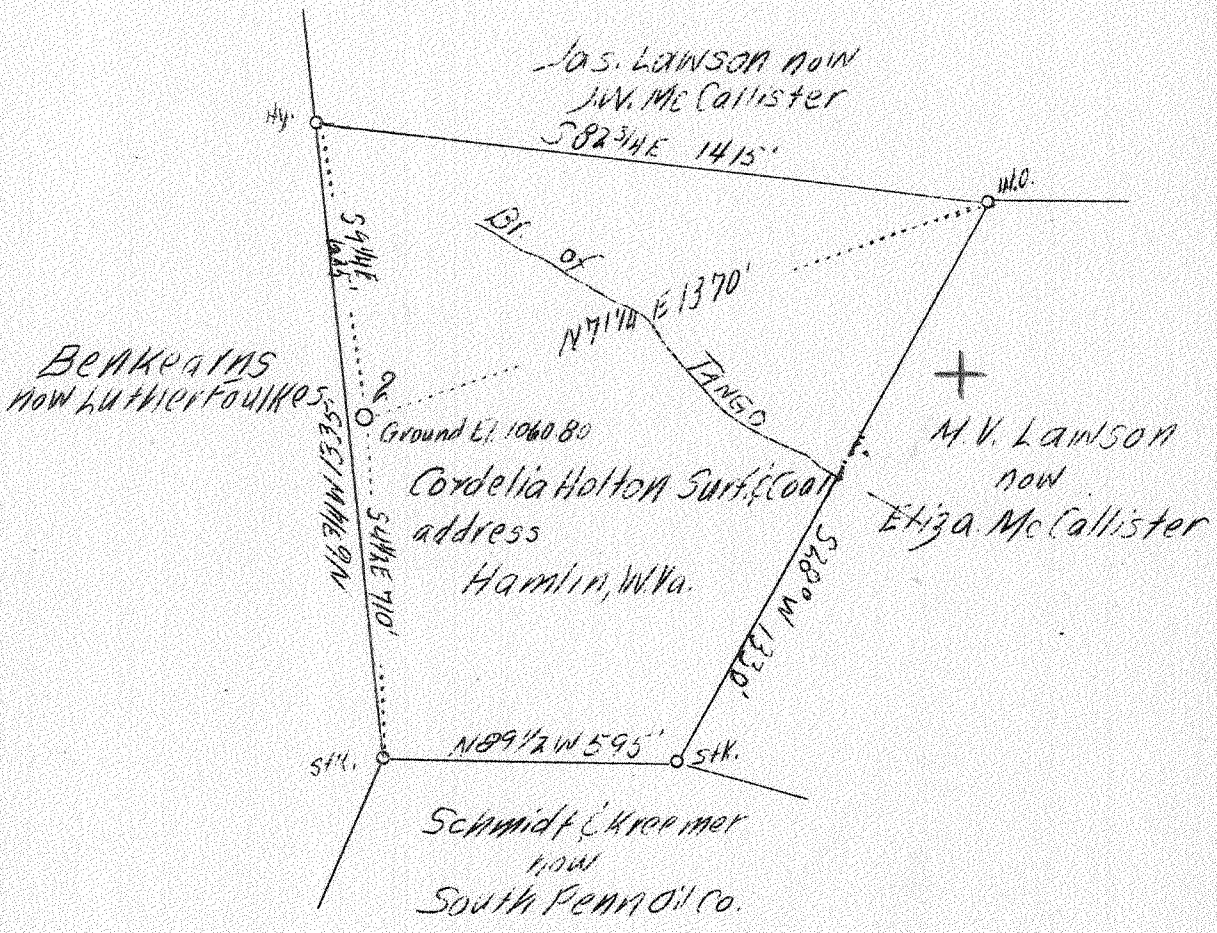


LATITUDE 38° 20'

LONGITUDE 81° 55'



Well to be abn'd.

APR 24 1939

1.7 W
5.44 Q
Squares 580-1 W 75-6

Company South Penn Oil Co.
 Address 411 7 Ave. Pittsburgh, W.Va.
 Farm Cordelia Holton
 Acres 40
 Lease No. 75040
 Well (Farm) No. 2
 Quadrangle Saint Albans
 County Lincoln
 District Duval
 Eng. E.C. Tabler
 Date 4/10/39
 Scale 1" = 400'

SW

STATE OF WEST VIRGINIA
 Department of Mines
 OIL AND GAS DIVISION
 Charleston

WELL LOCATION MAP

File No. Lin-192-A

x Denotes location of well on U.S. Topographic Maps, scale 1 to 62,500, latitude and longitude lines being represented by border lines as shown.

* Denotes one inch spaces on border line of original tracing.

WEST VIRGINIA DEPARTMENT OF MINES
OIL AND GAS DIVISION

503

WELL RECORD

Permit No. 1921A

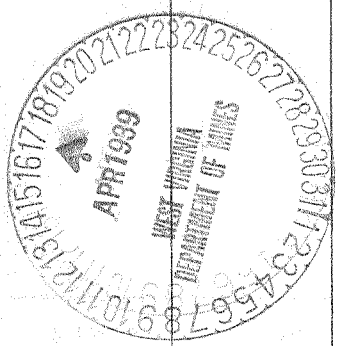
Oil or Gas Well (Kind) GAS

Company SOUTH PENN OIL COMPANY
 Address 411 Seventh Ave., Pittsburgh, Pa.
 Farm Cordelia Holton Acres 40
 Location (waters) Joes Creek
 Well No. 2 Elev. ---
 District Duval County Lincoln
 The surface of tract is owned in fee by Cordelia Holton
 Address Hamlin, W. Va.
 Mineral rights are owned by Cordelia Holton
 Address Hamlin, W. Va.
 Drilling commenced March 14, 1910
 Drilling completed April 25, 1910
 Date shot Oct. 25, 1910 Depth of shot ---
 Open Flow /10ths Water in --- Inch
 /10ths Merc. in --- Inch
 Volume --- Cu. Ft.
 Rock Pressure --- lbs. --- hrs.
 Oil --- bbls., 1st 24 hrs.
 Fresh water --- feet --- feet
 Salt water 1360 feet --- feet

Casing and Tubing	Used in Drilling	Left in Well	Packers
Size			Kind of Packer
16			
13			
10			Size of
8 1/4			
6 5/8	1885		Depth set
	1922		
5 3/16			
3			Perf. top
2			Perf. bottom
Liners Used			Perf. top
			Perf. bottom

CASING CEMENTED --- SIZE --- No. FT. --- Date ---
 COAL WAS ENCOUNTERED AT --- FEET --- INCHES
 --- FEET --- INCHES FEET --- INCHES
 --- FEET --- INCHES --- FEET --- INCHES

Formation	Color	Hard or Soft	Top	Bottom	Oil Gas or Water	Depth Found	Remarks
Salt Sand			1170	1673	Gas Water	1185	
Little Lime			1835	1873?		1260	
Pencil Cave			1871	1879			
Big Lime			1880	2065			
Big Injun Sand			2065	2115			
Slate & Shells			2115	2215			
Black Lime			2215	2295			
Slate & Shells			2295	2523			
Coffee Slate			2523	2543			
Berea Sand			2543	2563			
Total Depth				2565			



MAY 21 1939

