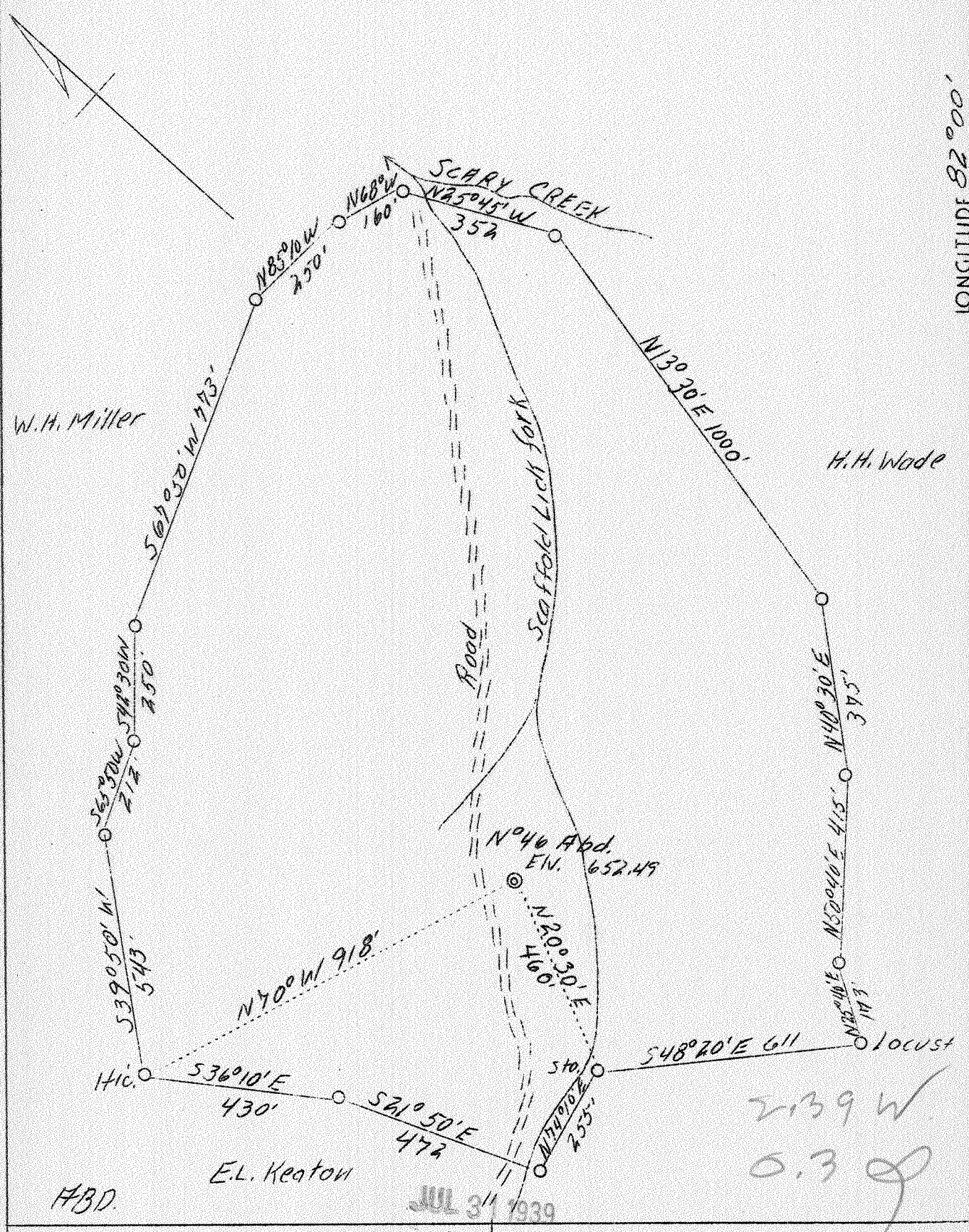


LATITUDE 38° 15'

LONGITUDE 82° 00'



Company	Blue Ridge Gas Co.
Address	Charleston, W. Va.
Farm	Kelly Chambers
Acres	50
Lease No.	B.R. 11
Well (Farm) No.	-
Serial No.	46
Elevation (SL)	652.49
Quadrangle	Midkiff
County	Lincoln
District	Carroll
Engineer	W. F. Watts
Eng. Reg. No.	Surveyor L. County
Date	July 14, 1939
Scale	1" - 300'

STATE OF WEST VIRGINIA
 Department of Mines
 OIL & GAS DIVISION
 Charleston

WELL LOCATION MAP

File No. LIN-199-A

x Denotes location of well on U. S. Topographic Maps, scale 1 to 62,500, latitude and longitude lines being represented by border lines as shown.

- Denotes one inch spaces on border line of original tracing.

STATE OF WEST VIRGINIA
DEPARTMENT OF MINES
OIL AND GAS DIVISION

507

WELL RECORD

about
Permit No. 199-A
Middlefield ME

Oil or Gas Well Gas
(Kind)

Company Blue Ridge Gas Company
Address P.O. Box 586, Charleston, West Va.
Farm Kelly Chambers, et al. Acres
Location (waters) Sassy Creek
Well No. 40 Elev.
District Carroll County Lincoln
The surface of tract is owned in fee by
Address
Mineral rights are owned by Kelly Chambers, et al.
Hemlin, W. Va. Address
Drilling commenced 7-25-24
Drilling completed 10-11-24
Date shot 10-11-24 Depth of shot
Open Flow /10ths Water in Inch
/10ths Merc. in Inch
Volume 281 Cu. Ft.
Rock Pressure 245 lbs. hrs.
Oil bbls., 1st 24 hrs.
Fresh water feet feet
Salt water feet feet

Casing and Tubing	Used in Drilling	Left in Well	Packers
Size			Kind of Packer
16			
13			Anchor
10		16	Size of
8 1/4		200	
6 3/8		1338	Depth set
5 1/2		1756	
3			Perf. top
2		2006	Perf. bottom
Liners Used			Perf. top
			Perf. bottom

CASING CEMENTED SIZE No. Ft. Date
COAL WAS ENCOUNTERED AT FEET INCHES
FEET INCHES FEET INCHES
FEET INCHES FEET INCHES

Formation	Color	Hard or Soft	Top	Bottom	Oil, Gas or Water	Depth Found	Remarks
Surface			0	16			
Sand			16	50			
Slate			50	100			
Sand			100	250			
Slate			250	300			
Sand			300	500			
Slate			500	550			
Sand			550	700			
Slate			700	775			
Salt Sand			775	1158			
Slate			1158	1228			
Marion Sand			1228	1338			
Slate			1338	1350			
Little Lime			1350	1365			
Pencil Cave			1365	1366			
Big Lime			1366	1546			
Big Injun Sand			1546	1586			
Slate			1586	1708			
Shell			1708	1820			
Slate Shells			1820	2057			
Brown Shale			2057	2057			
Berea Sand			2057	2077			
Pocket			2077	2096			Total depth



Formation	Color	Hard or Soft	Top	Bottom	Oil, Gas or Water	Depth Found	Remarks

Date 7-18, 1939

APPROVED Blue Ridge Gas Company, Owner

By George H Williamson
 (Title) K.P.