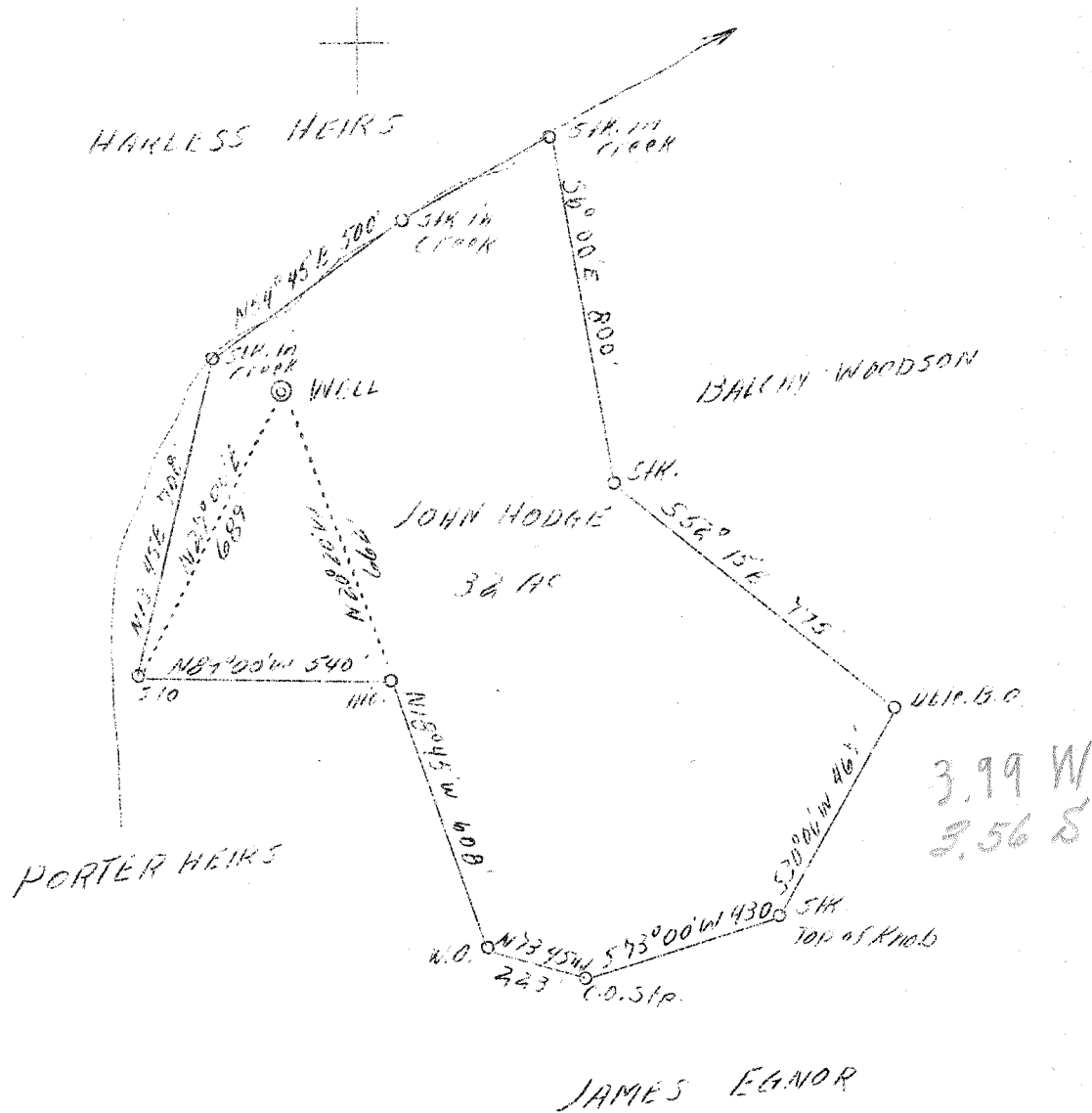


LATITUDE 38° 15'

LONGITUDE 81° 05'



ABD. ✓

Company	Kanawha Gas & Utilities
Address	Hamlin, W. Va.
Farm	John Hodge
Acres	32
Well (Farm) No.	1
Elevation (SL)	840
Quadrangle	Madison
County	Lincoln
District	Union
Engineer	S. V. Haworth
Eng. Reg. No.	224
Date	Oct. 11, 1939
Scale	1" = 400'

STATE OF WEST VIRGINIA
 Department of Mines
 OIL & GAS DIVISION
 Charleston

WELL LOCATION MAP

File No. LIN 204-A

x Denotes location of well on U. S. Topographic Maps, scale 1 to 62,500, latitude and longitude lines being represented by border lines as shown.

- Denotes one inch spaces on border line of original tracing.