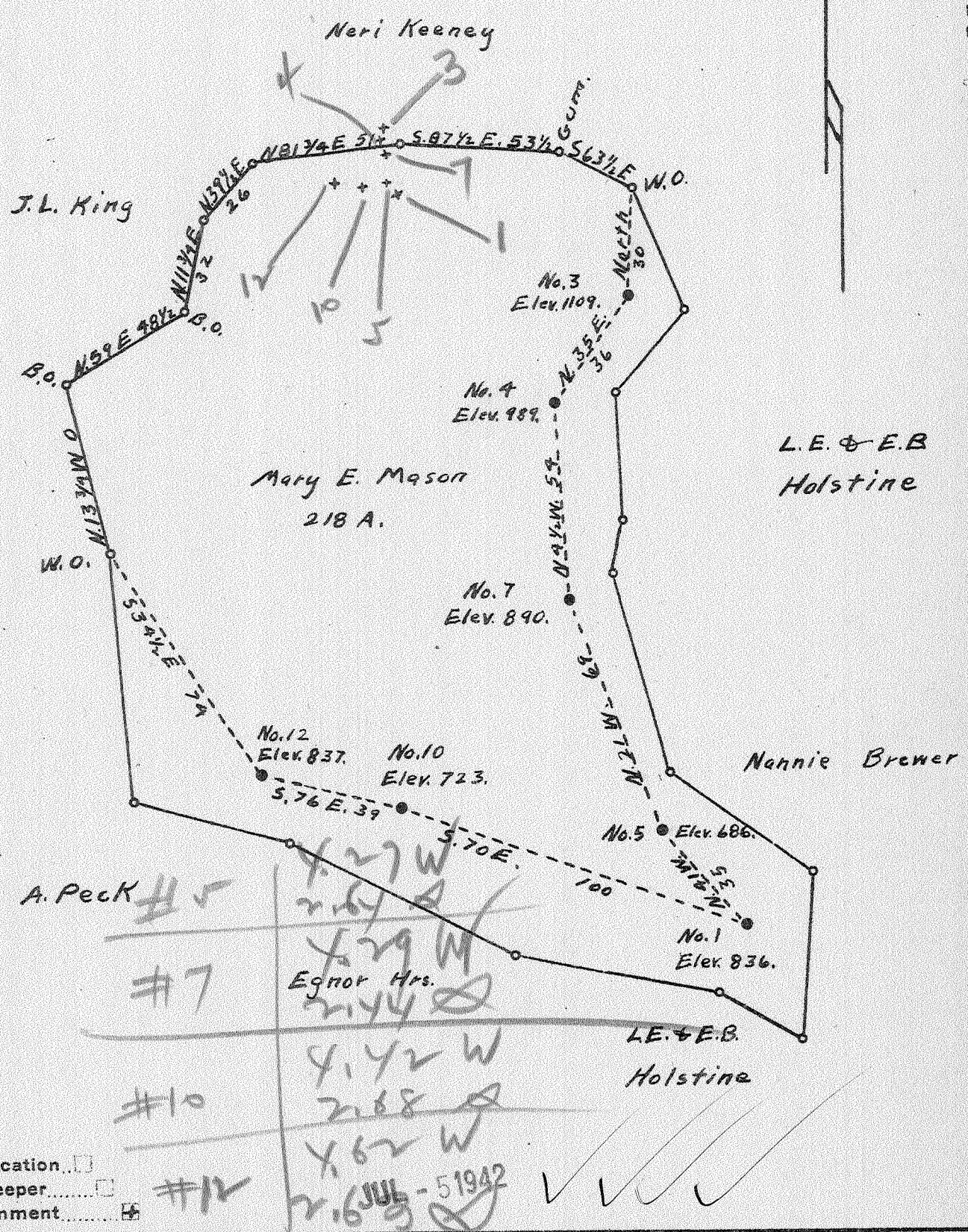


Latitude 38 15

Longitude 81 55



Company Frick-Reid Supply Corporation  
 Address Sandyville, West Virginia  
 Farm Mary E. Mason  
 Tract \_\_\_\_\_ Acres 218 Lease No. \_\_\_\_\_  
 Well (Farm) No. 1-3-4-5-7-10-12 Serial No. \_\_\_\_\_  
 Elevation (Spirit Level) 836-1109-989-686-890-723-837  
 Quadrangle Madison  
 County Lincoln District Union  
 Engineer A. K. Westfall  
 Engineer's Registration No. Co. Surveyor, Ritchie, Co.  
 File No. \_\_\_\_\_ Drawing No. \_\_\_\_\_  
 Date May 23, 1942 Scale 1" = 50 Poles

STATE OF WEST VIRGINIA  
 DEPARTMENT OF MINES  
 OIL AND GAS DIVISION  
 CHARLESTON

**WELL LOCATION MAP**  
 Lin-319-A-Well # 5  
 FILE NO. Lin-320-A-Well # 7  
 Lin-321-A-Well # 10  
 Lin-322-A-Well # 12

+ Denotes location of well on United States Topographic Maps, scale 1 to 62,500, latitude and longitude lines being represented by border lines as shown.  
 - Denotes one inch spaces on border line of original tracing.

STATE OF WEST VIRGINIA  
DEPARTMENT OF MINES  
OIL AND GAS DIVISION

615

WELL RECORD

Permit No. 321-A

Oil or Gas Well Oil Well  
(KIND)

Company Frick-Reid Supply Corporation  
Address Drawer 2481, Tulsa, Okla.  
Farm Mary Mason Acres 218  
Location (waters) Sugartree Br. Str. Fk. Mud R.  
Well No. Ten Elev 723  
District Union County Lincoln  
The surface of tract is owned in fee by Gordon Mason et al  
Griffithsville, W. Va.  
Mineral rights are owned by Gordon Mason et al  
Griffithsville Address W. Va.  
Drilling commenced January 1, 1916  
Drilling completed February 4, 1916  
Date Shot 2/7/1916 From 2182 To 2200  
With 90 Qts. Nitro-glycerine  
Open Flow /10ths Water in Inch  
/10ths Merc. in Inch  
Volume  Cu. Ft.  
Rock Pressure  lbs.  hrs.  
Oil 5 bbls., 1st 24 hrs.  
Fresh water 120 feet  feet  
Salt water 890 feet  feet

Casing and Tubing	Used in Drilling	Left in Well	Packers
Size			Kind of Packer
16			
13			
10			Size of
8 1/4	330	150	
6 5/8	1499	1499	Depth set
5 3/16			
3			Perf. top
2		2201	Perf. bottom
Liners Used			Perf. top
			Perf. bottom

CASING CEMENTED  SIZE  No. Ft.  Date   
COAL WAS ENCOUNTERED AT 135 FEET  INCHES  
140 FEET  INCHES 295 FEET  INCHES  
298 FEET  INCHES 325 FEET 327 INCHES

Formation	Color	Hard or Soft	Top	Bottom	Oil, Gas or Water	Depth Found	Remarks
Soil			0	15			
Slate			15	70			
Sand			70	135			
Coal			135	140			
Sand			140	260			
Slate			260	295			
Coal			295	298			
Sand			298	325			
Coal			325	327			
Slate			327	335			
Sand			335	360			
Slate			360	510			
Sand			510	530			
Slate			530	675			
Sand			675	755			
Slate			755	800			
Salt sand			800	1425	Water	890	Hole full
Slate			1425	1440			
Sand			1440	1460			
Black lime			1460	1490			
Pencil cave			1490	1495			
White lime			1495	1705	Gas	1620	Little gas
Injun sand			1705	1745			
Slate			1745	1765			
Shells			1765	1985			
Slate			1985	2160			
Brown shale			2160	2180			
Berea sand			2180	2201			

